

Handbediende stuurschuiven sectie

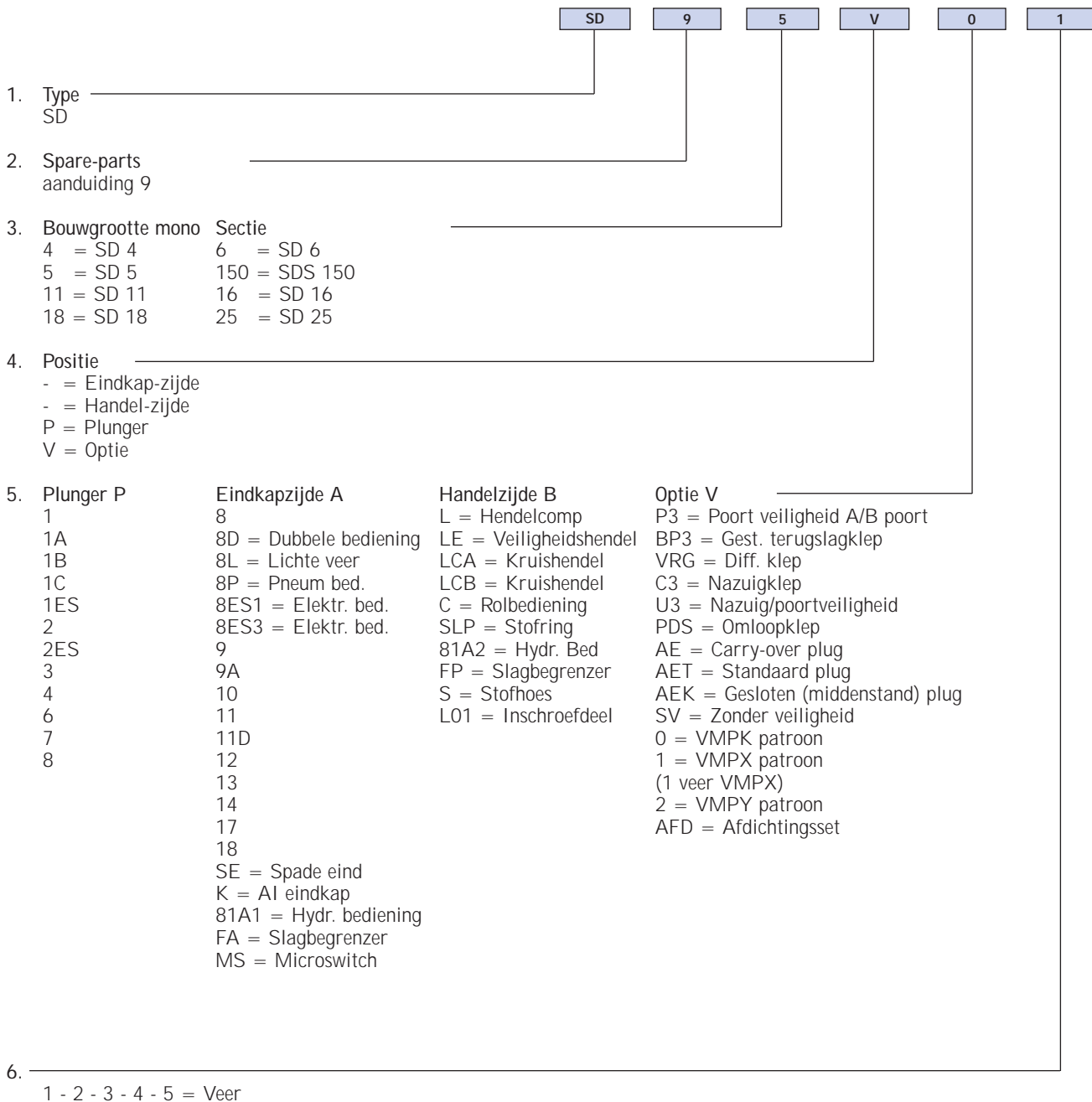
TYPE SDS9..T
Boutsets SDS-SD

Omschrijving	Koppel (Nm)	Bestelnummer
Set bouten (3) SD 6-1 (30 NM)	30	SD 9-6-T1
Set bouten (3) SD 6-2 (30 NM)	30	SD 9-6-T2
Set bouten (3) SD 6-3 (30 NM)	30	SD 9-6-T3
Set bouten (3) SD 6-4 (30 NM)	30	SD 9-6-T4
Set bouten (3) SD 6-5 (30 NM)	30	SD 9-6-T5
Set bouten (3) SD 6-6 (30 NM)	30	SD 9-6-T6
Set bouten (3) SD 6-7 30 NM	30	SD 9-6-T7
Set bouten (3) SD 6-8 30 NM	30	SD 9-6-T8
Set bouten (3) SD 6-9 30 NM	30	SD 9-6-T9
Set bouten (3) SD 6-10 30 NM	30	SD 9-6-T10
Set bouten (4) SDS 150-1 50NM	50	SDS 9-150-T1
Set bouten (4) SDS 150-2 50NM	50	SDS 9-150-T2
Set bouten (4) SDS 150-3 50NM	50	SDS 9-150-T3
Set bouten (4) SDS 150-4 50NM	50	SDS 9-150-T4
Set bouten (4) SDS 150-5 50NM	50	SDS 9-150-T5
Set bouten (4) SDS 150-6 50NM	50	SDS 9-150-T6

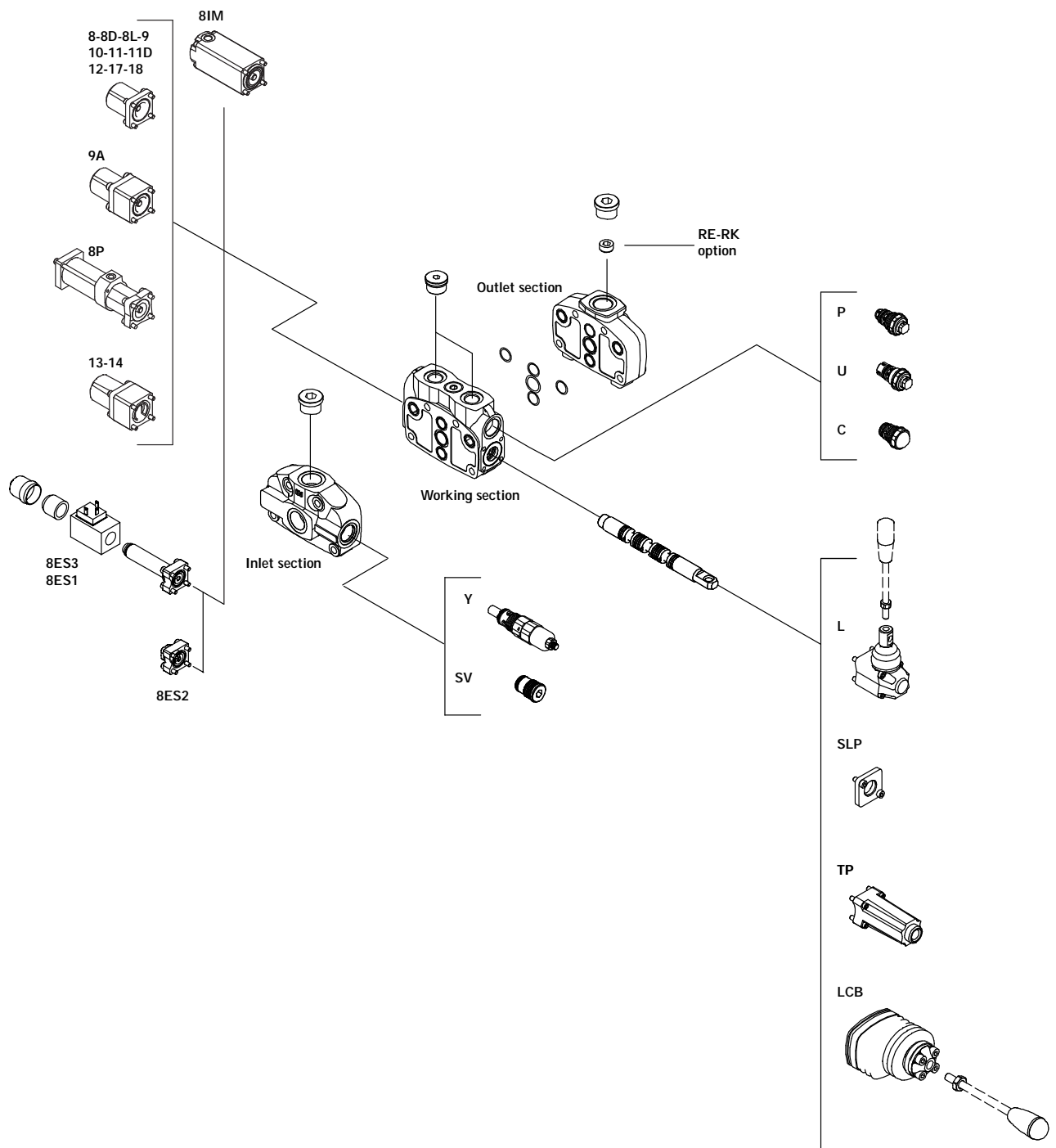
Omschrijving	Koppel (Nm)	Bestelnummer
Set bouten (4) SDS 150-7 50NM	50	SDS 9-150-T7
Set bouten (4) SDS 150-8 50NM	50	SDS 9-150-T8
Set bouten (4) SDS 150-9 50NM	50	SDS 9-150-T9
Set bouten (4) SDS 150-10 50NM	50	SDS 9-150-T10
Set bouten SD 16-1	40	SD 9-16-T1
Set bouten (4) SD 16-2	40	SD 9-16-T2
Set bouten (4) SD 16-3	40	SD 9-16-T3
Set bouten (4) SD 16-4	40	SD 9-16-T4
Set bouten (4) SD 16-5	40	SD 9-16-T5
Set bouten (4) SD 16-6	40	SD 9-16-T6
Set bouten (4) SD 25-1 70NM	70	SD 9-25-T1
Set bouten (4) SD 25-2 70NM	70	SD 9-25-T2
Set bouten (4) SD 25-3 70NM	70	SD 9-25-T3
Set bouten (4) SD 25-4 70NM	70	SD 9-25-T4
Set bouten (4) SD 25-5 70NM	70	SD 9-25-T5



Bestelsleutel spareparts handbediende stuurschuiven sectie



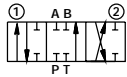
Overzicht spareparts handbediende stuurschuiven sectie



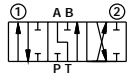
* Andere bedieningen op aanvraag leverbaar

Plunjers

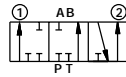
PLUNJER 1 DUBBELWERKEND
A EN B GESLOTEN



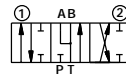
PLUNJER 1A DUBBELWERKEND
MET ZWEVENDE A



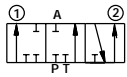
PLUNJER 1B DUBBELWERKEND
MET ZWEVENDE B



PLUNJER 2 DUBBELWERKEND
MET ZWEVENDE A EN B



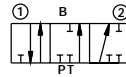
PLUNJER 3 ENKELWERKEND
MET AFGEPLUGDE B



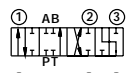
PLUNJER 3 ENKELWERKEND
MET ZWEVENDE A



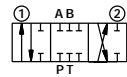
PLUNJER 4 ENKELWERKEND
MET AFGEPLUGDE A



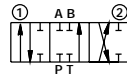
PLUNJER 5
OP AANVRAAG LEVERBAAR



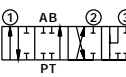
PLUNJER 6 DUBBELWERKEND
CLOSED CENTER



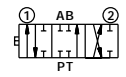
PLUNJER 7 DUBBELWERKEND
CLOSED CENTER, ZWEVENDE A B



PLUNJER 8 DUBBELWERKEND
EXTRA DIFFERENTIEEL STAND

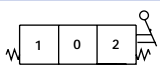


PLUNJER 1C DUBBELWERKEND
VOOR ROL BEDIENING

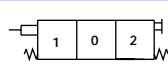


Arreteringen

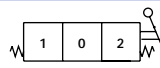
ARRETERING 8,
VEERRETOUR MIDDENSTAND



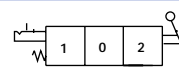
ARRETERING 8D,
DUBBELE BEDIENING



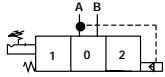
ARRETERING 8L, VEERRETOUR
MIDDENSTAND LICHTE VEER



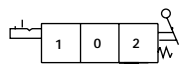
ARRETERING 9,
ARRETERING IN STAND 1



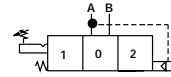
ARRETERING 9A, ARRETERING IN
STAND 1 DUBBELWERKEND



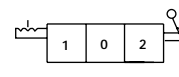
ARRETERING 10,
ARRETERING IN STAND 2



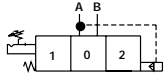
ARRETERING 10A, ARRETERING
IN STAND 2 DUBBELWERKEND



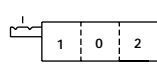
ARRETERING 11,
ARRETERING IN ALLE STANDEN



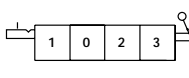
ARRETERING 11D, DUBBELE
BEDIENING MET ARRET. 11



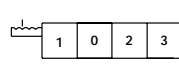
ARRETERING 12,
ARRETERING IN STAND 1 EN 2



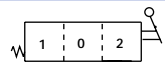
ARRETERING 13, ARRETERING IN
STAND 3 (ZWEEFSTAND)



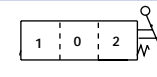
ARRETERING 14, ARRETERING IN
ALLE STANDEN (ZWEEFSTAND)



ARRETERING 17,
VEERRETOUR NAAR STAND 1

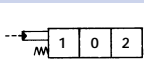


ARRETERING 18,
VEERRETOUR NAAR STAND 2

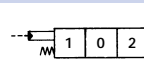


Bedieningen

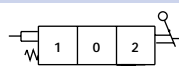
BEDIENING 81A1, HYDR.
BEDIENING ZIJDE A



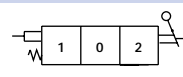
BEDIENING 81A1, HYDR.
BEDIENING ZIJDE B



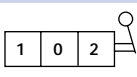
BEDIENING FA, SLAGBEGRENZER
HANDELSIJDE



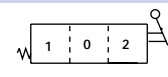
BEDIENING FP, SLAGBEGRENZER
VEERZIJDE



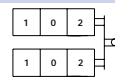
BEDIENING L,
HENDEL COMPLEET



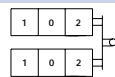
BEDIENING LE,
VEILIGHEIDS HENDEL



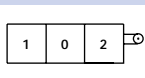
BEDIENING LCA,
DUBBELE BEDIENING



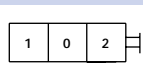
BEDIENING LCB,
DUBBELE BEDIENING



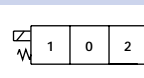
BEDIENING C,
ROLBEDIENING



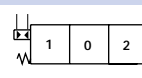
BEDIENING SLP,
STOFKAP



ELEKTRISCHE BEDIENING,
B8ES1 / ES3*



ARRETERING 8P,
PNEUMATISCHE BEDIENING



* Speciale plunjer