

## Distributeurs manuels à section

## TYPE SDS9,,T

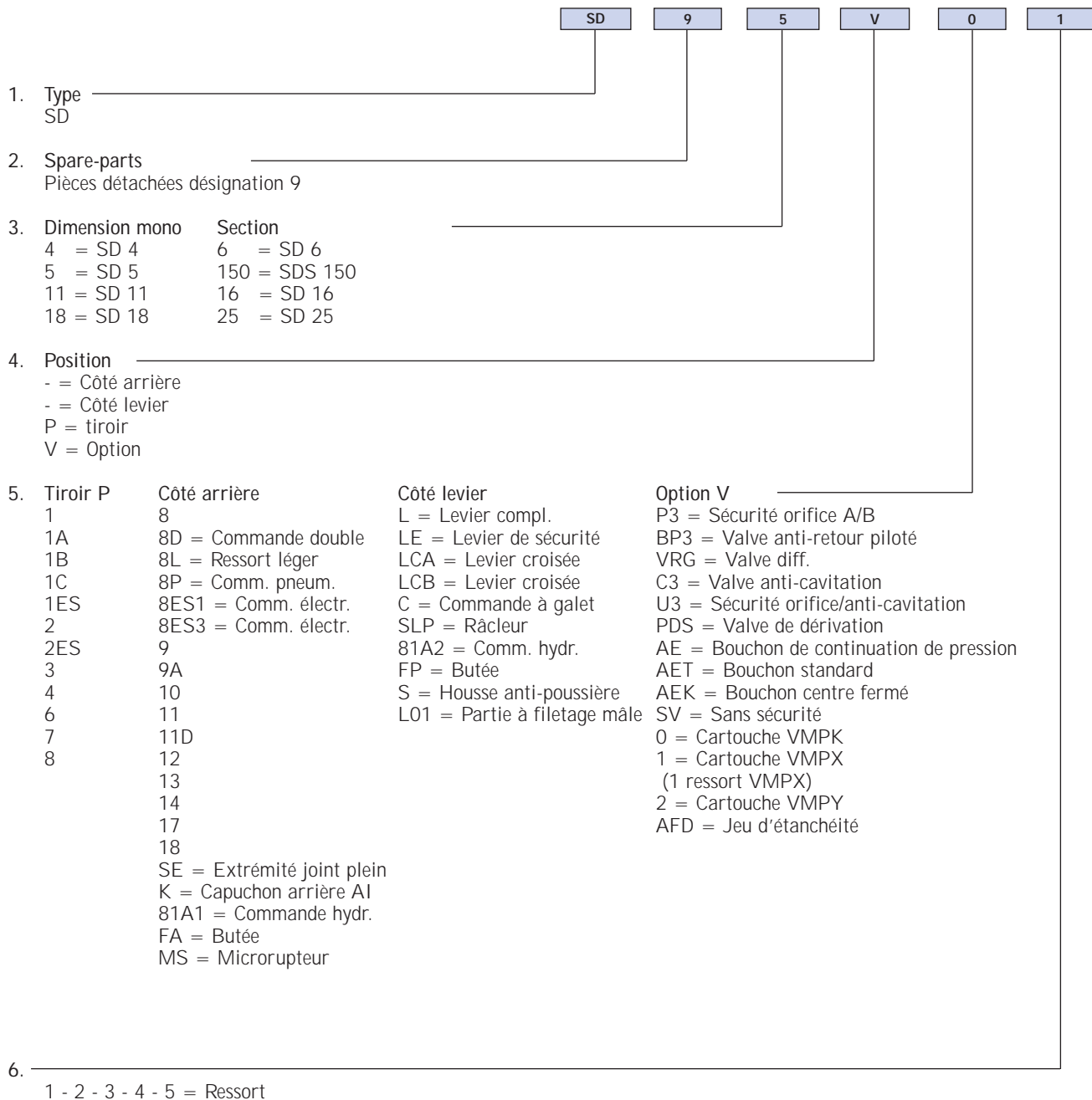
Jeux de boulons SDS-SD

Description	Couple	Numéro de commande
JEU DE BOULONS	30	SD 9-6-T1
JEU DE BOULONS	30	SD 9-6-T2
JEU DE BOULONS	30	SD 9-6-T3
JEU DE BOULONS	30	SD 9-6-T4
JEU DE BOULONS	30	SD 9-6-T5
JEU DE BOULONS	30	SD 9-6-T6
KIT DE BOUL. 3 P. SD 6-7 30 NM	30	SD 9-6-T7
KIT DE BOUL. 3 P. SD 6-8 30 NM	30	SD 9-6-T8
KIT DE BOUL. 3 P. SD 6-9 30 NM	30	SD 9-6-T9
KIT DE BOUL. 3 P. SD 6-10 30 N	30	SD 9-6-T10
JEU DE BOULONS	50	SDS 9-150-T1
JEU DE BOULONS	50	SDS 9-150-T2
JEU DE BOULONS	50	SDS 9-150-T3
JEU DE BOULONS	50	SDS 9-150-T4
JEU DE BOULONS	50	SDS 9-150-T5
JEU DE BOULONS	50	SDS 9-150-T6

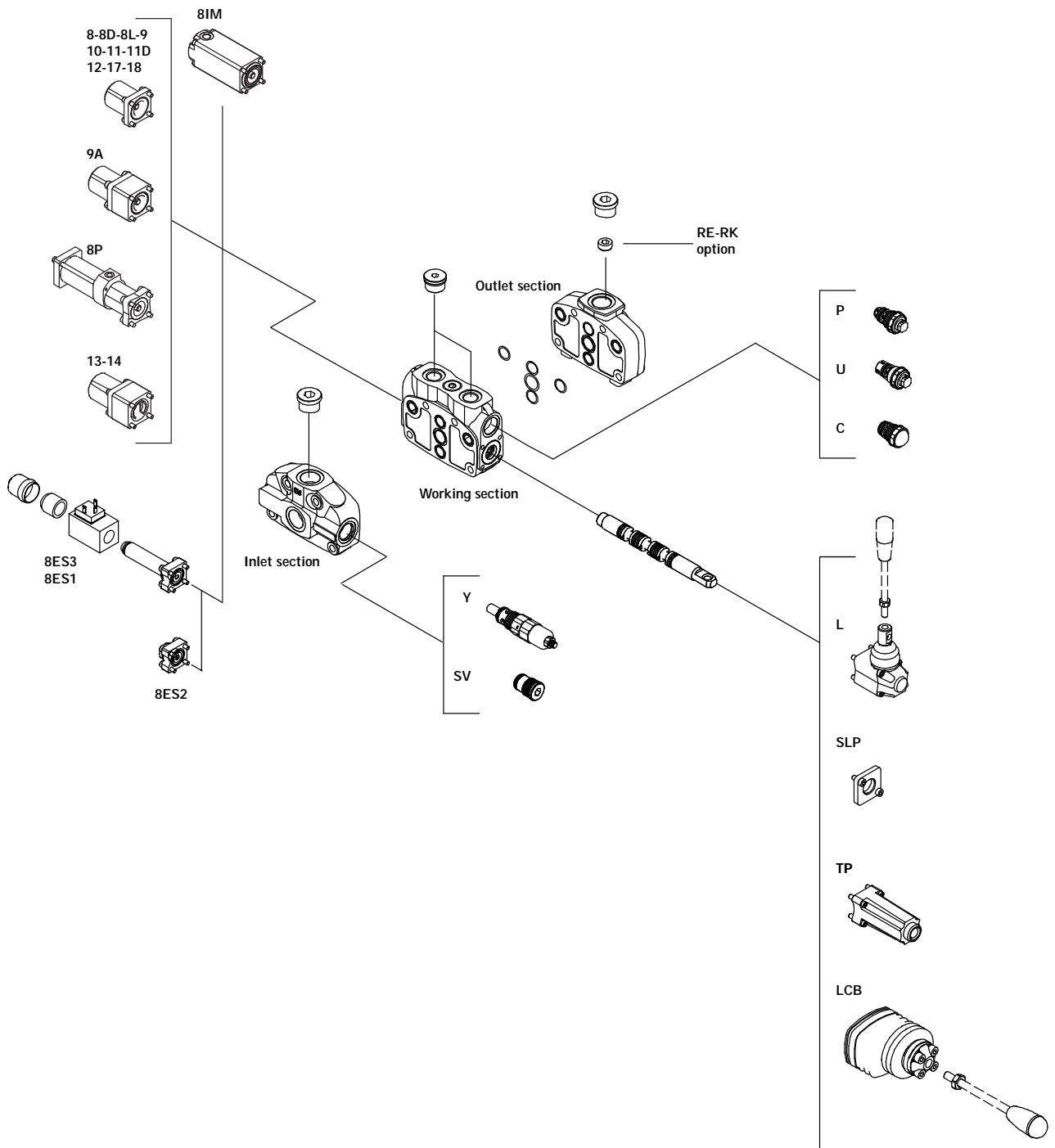
Description	Couple	Numéro de commande
JEU DE BOULONS 7ELEM.	50	SDS 9-150-T7
JEU DE BOULONS 8ELEM.	50	SDS 9-150-T8
JEU DE BOULONS 9ELEM.	50	SDS 9-150-T9
JEU DE BOULONS 10ELEM.	50	SDS 9-150-T10
KIT DE BOULONS 4 P. PR SD 16-1	40	SD 9-16-T1
KIT DE BOUL. 4P V. SD 16-2	40	SD 9-16-T2
JEU DE BOULONS 3ELEM.	40	SD 9-16-T3
JEU DE BOULONS 4ELEM.	40	SD 9-16-T4
KIT DE BOUL. 4P V. SD 16-5	40	SD 9-16-T5
KIT DE BOUL. 4P V. SD 16-6	40	SD 9-16-T6
KIT DE BOUL. 4P V. SD 25-1 70N	70	SD 9-25-T1
KIT DE BOUL. 4P V. SD 25-2 70N	70	SD 9-25-T2
KIT DE BOUL. 4P V. SD 25-3 70N	70	SD 9-25-T3
KIT DE BOUL. 4P V. SD 25-4 70N	70	SD 9-25-T4
KIT DE BOUL. 4P V. SD 25-5 70N	70	SD 9-25-T5



## Grille de commande des pièces détachées, distributeurs manuels



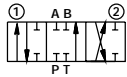
## Aperçu des pièces détachées, distributeurs manuels



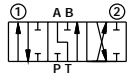
\* Autres commandes disponibles sur demande

## Tiroirs

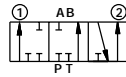
**TIROIR 1 DOUBLE EFFET, A ET B FERMÉS**



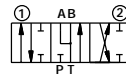
**TIROIR 1A DOUBLE EFFET, A FLOTTANT**



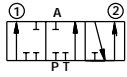
**TIROIR 1B DOUBLE EFFET, B FLOTTANT**



**TIROIR 2 DOUBLE EFFET, A ET B FLOTTANTS**



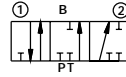
**TIROIR 3 SIMPLE EFFET, B BOUCHÉ**



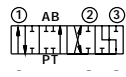
**TIROIR 3 SIMPLE EFFET, A FLOTTANT**



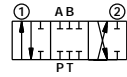
**TIROIR 4 SIMPLE EFFET, A BOUCHÉ**



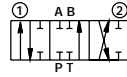
**TIROIR 5 LIVRABLE SUR DEMANDE**



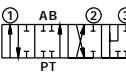
**TIROIR 6 DOUBLE EFFET, CENTRE FERMÉ**



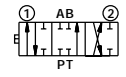
**TIROIR 7 DOUBLE EFFET, CENTRE FERMÉ, A ET B FLOTTANTS**



**TIROIR 8 DOUBLE EFFET, MODE DIFFÉRENTIEL SUPPL.**

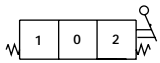


**TIROIR 1C DOUBLE EFFET, POUR COMMANDE À GALET**

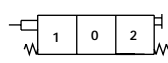


## Verrouillages

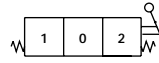
**VERROUILLAGE 8, RAPPEL PAR RESSORT, POSITION INTERMÉDIAIRE**



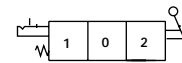
**VERROUILLAGE 8D, COMMANDE DOUBLE**



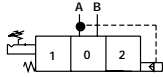
**VERROUILLAGE 8L, RAPPEL PAR RESSORT, POSITION INTERMÉDIAIRE, RESSORT LÉGER**



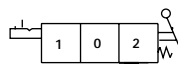
**VERROUILLAGE 9, VERROUILLAGE EN POSITION 1**



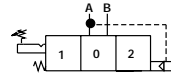
**VERROUILLAGE 9A, VERROUILLAGE EN POSITION 1, DOUBLE EFFET**



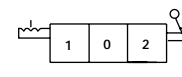
**VERROUILLAGE 10, VERROUILLAGE EN POSITION 2**



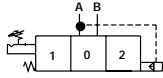
**VERROUILLAGE 10A, VERROUILLAGE EN POSITION 2, DOUBLE EFFET**



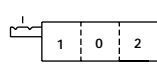
**VERROUILLAGE 11, VERROUILLAGE TOUTES POSITIONS**



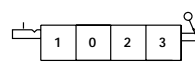
**VERROUILLAGE 11D, COMMANDE DOUBLE AVEC VERROUILLAGE 11**



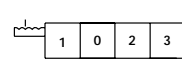
**VERROUILLAGE 12, VERROUILLAGE EN POSITIONS 1 ET 2**



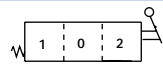
**VERROUILLAGE 13, VERROUILLAGE EN POSITION 3 (POSITION FLOTTANT)**



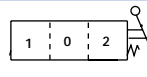
**VERROUILLAGE 14, VERROUILLAGE TOUTES POSITIONS (POSITION FLOTTANT)**



**VERROUILLAGE 17, RAPPEL PAR RESSORT VERS POSITION 1**

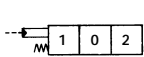


**VERROUILLAGE 18, RAPPEL PAR RESSORT VERS POSITION 2**

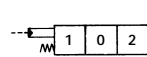


## Commandes

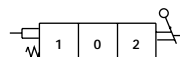
**COMMANDE 81A1, COMMANDE HYDR. CÔTÉ A**



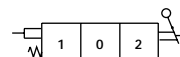
**COMMANDE 81A1, COMMANDE HYDR. CÔTÉ B**



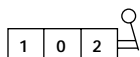
**COMMANDE FA, BUTÉE CÔTÉ LEVIER**



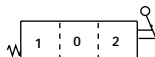
**COMMANDE FP, BUTÉE CÔTÉ RESSORT**



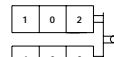
**COMMANDE L, LEVIER COMPLÈTE**



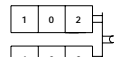
**COMMANDE LE, LEVIER DE SÉCURITÉ**



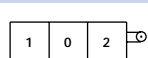
**COMMANDE LCA, COMMANDE DOUBLE**



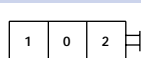
**COMMANDE LCB, COMMANDE DOUBLE**



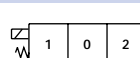
**COMMANDE C, COMMANDE À GALET**



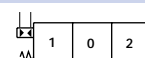
**COMMANDE SLP, CAPUCHON ANTI-POUSSIÈRE**



**COMMANDE ÉLECTRIQUE, B8ES1 / ES3\***



**VERROUILLAGE 8P, COMMANDE PNEUMATIQUE**



\* TIROIR spécial