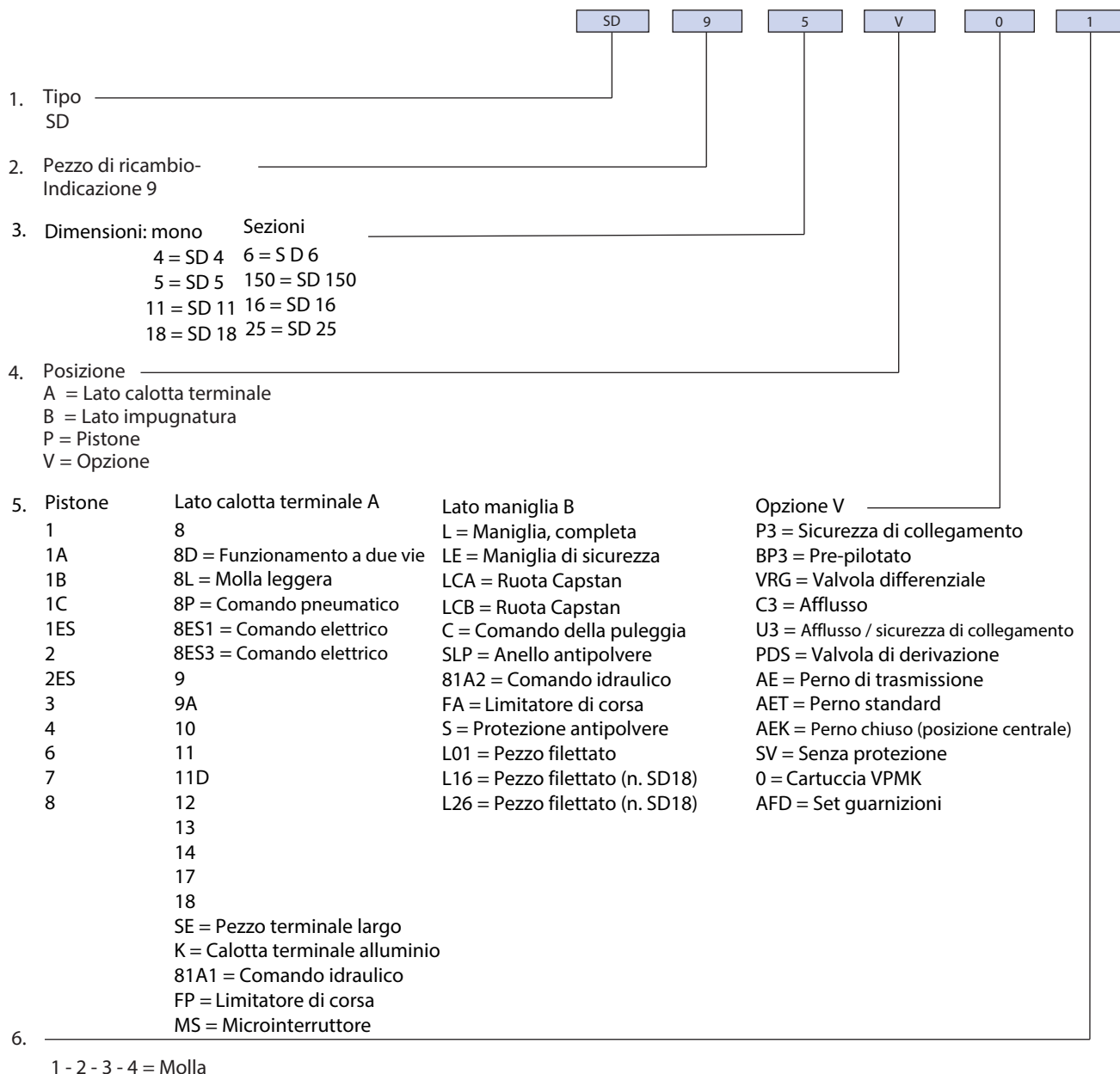
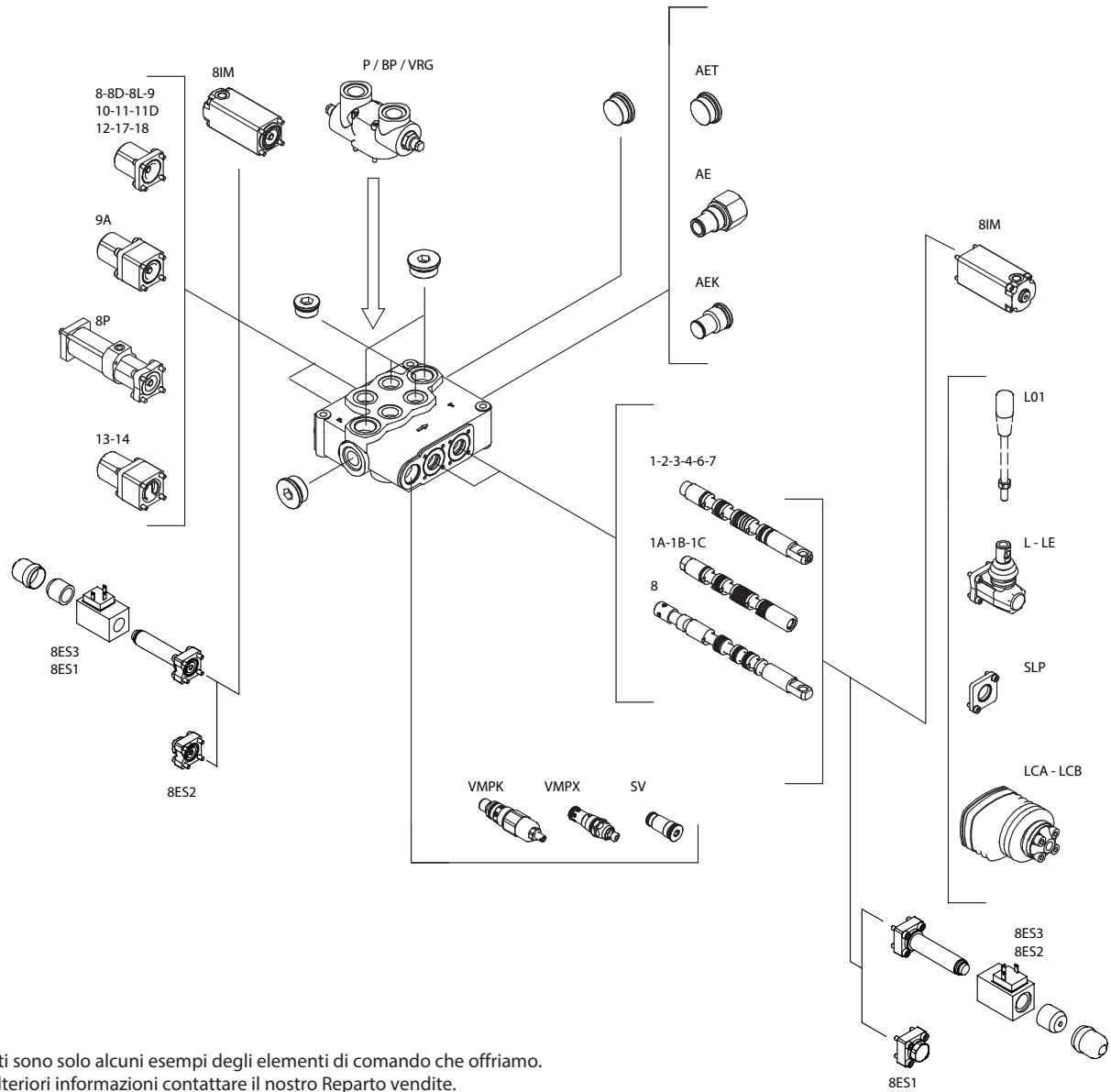


Valvole di comando manuali

Codice d'ordine per valvole di comando manuali





Questi sono solo alcuni esempi degli elementi di comando che offriamo.
Per ulteriori informazioni contattare il nostro Reparto vendite.

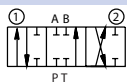


Valvole di comando manuali

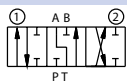


Pistone

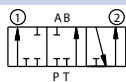
Pistone 1 a doppia azione A e B chiuso



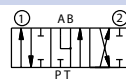
Pistone 1A a doppia azione con galleggiante A



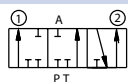
Pistone 1B a doppia azione con galleggiante B



Pistone 2 a doppia azione con galleggiante A e B



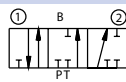
Pistone 3 a singola azione con B collegato



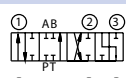
Pistone 3A a singola azione con galleggiante A



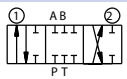
Pistone 4 a singola azione con A collegato



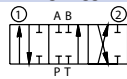
Pistone 5 azionato in base al fabbisogno



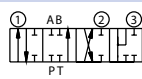
Pistone 6 a doppia azione chiuso centralmente



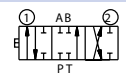
Pistone 7 a doppia azione chiuso centralmente con galleggianti A e B



Pistone 2 a doppia azione con posizione differenziale extra

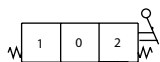


Pistone 1C a doppia azione per comando per puleggia

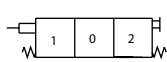


Arresti

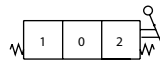
Arresto 8, la molla torna in posizione centrale



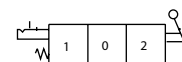
Arresto 8D, funzionamento a due vie con arresto 8



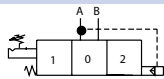
Arresto 8L, la molla torna in posizione centrale con una molla leggera



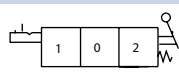
Arresto 9, arresto in posizione 1



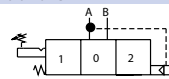
Arresto 9A, arresto in posizione 1, a doppia azione



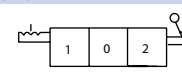
Arresto 10, arresto in posizione 2



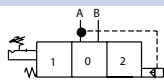
Arresto 10A, arresto in posizione 2, a doppia azione



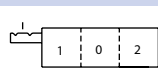
Arresto 11, arresto in tutte le posizioni



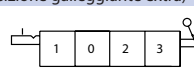
Arresto 11D, funzionamento a due vie viene con arresto 11



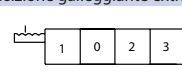
Arresto 12, a doppia azione in posizione 1 e 2



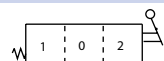
Arresto 13, arresto in posizione 3 (posizione galleggiante extra)



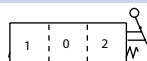
Arresto 14, arresto in tutte le posizioni (posizione galleggiante extra)



Arresto 17, la molla torna in posizione 1

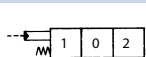


Arresto 18, la molla torna in posizione 2

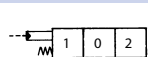


Elementi di comando

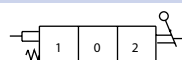
Elemento di comando 81A1, comando idraulico lato calotta terminale



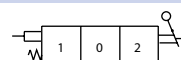
Elemento di comando 81A2, comando idraulico lato maniglia



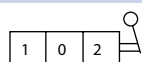
Elemento di comando FA, limitatore di corsa lato maniglia



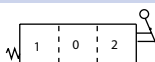
Elemento di comando FP, limitatore di corsa lato calotta terminale



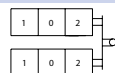
Elemento di comando L, maniglia completa



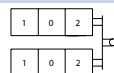
Elemento di comando LE, maniglia di sicurezza



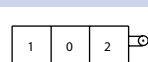
Elemento di comando LCA, funzionamento a due vie



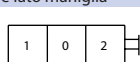
Elemento di comando LCB, funzionamento a due vie



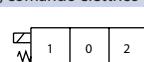
Elemento di comando C, comando per puleggia



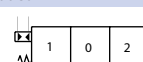
Elemento di comando SLP, protezione antipolvere lato maniglia



Elemento di comando B8ES1/B8ES3, comando elettrico



Arresto 8P, comando pneumatico



* PISTONE SPECIAL