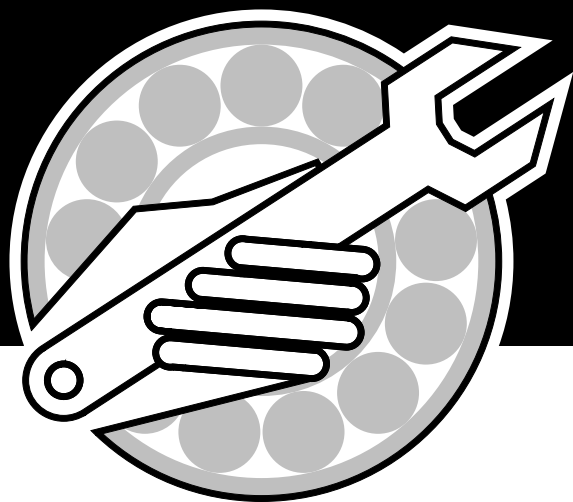




Parts Manual



Field-Pro Heavy Harrow Bar

Part Number H28542-02

IMPORTANT:

ALL ITEMS ARE IDENTIFIED WITH A PART NUMBER. Some of the smaller parts such as bolts, nuts, washers, etc. are not all shown, however, the quantity used are listed in the text for that section which they fit into. That particular quantity is always the quantity required for one complete assembly.

Smaller parts, which are welded together to construct a larger part, are not to be ordered as individual pieces, unless they have a part number to identify them.

Contact your nearest dealer for genuine repair parts. Dealers carry ample stock and are backed by the manufacturer and regional associations.

MORRIS PAINT

Spray Cans:

Part Number	Description
W-4647	Red MORRIS Spray Can
W-4648	Blue MORRIS Spray Can
N31087	Sky White MORRIS Spray Can

Litre Cans:

Part Number	Description
Z-10	Red MORRIS Paint/Litre
Z-11	Blue MORRIS Paint/Litre

Table of Contents

Section 1:	
Frame & Hitch	1-1
Field Pro 50 & 70 Ft Models	1-2
Transport Axle	1-5
Hitch Jack	1-6
Section 2:	
Harrows	2-1
Harrow Section	2-2
Section 3:	
Axle & Wheels	3-1
Main Frame Wheel Assembly	3-2
Wing Wheel Assemblies	3-3
Section 4:	
Hydraulics	4-1
50 & 70 Ft Models	4-2
Cylinders	4-4
Section 5:	
Lighting and Safety Signs	5-1
Marking Lights	5-2
Safety Signs	5-4
Index	Index-i

Table of Contents

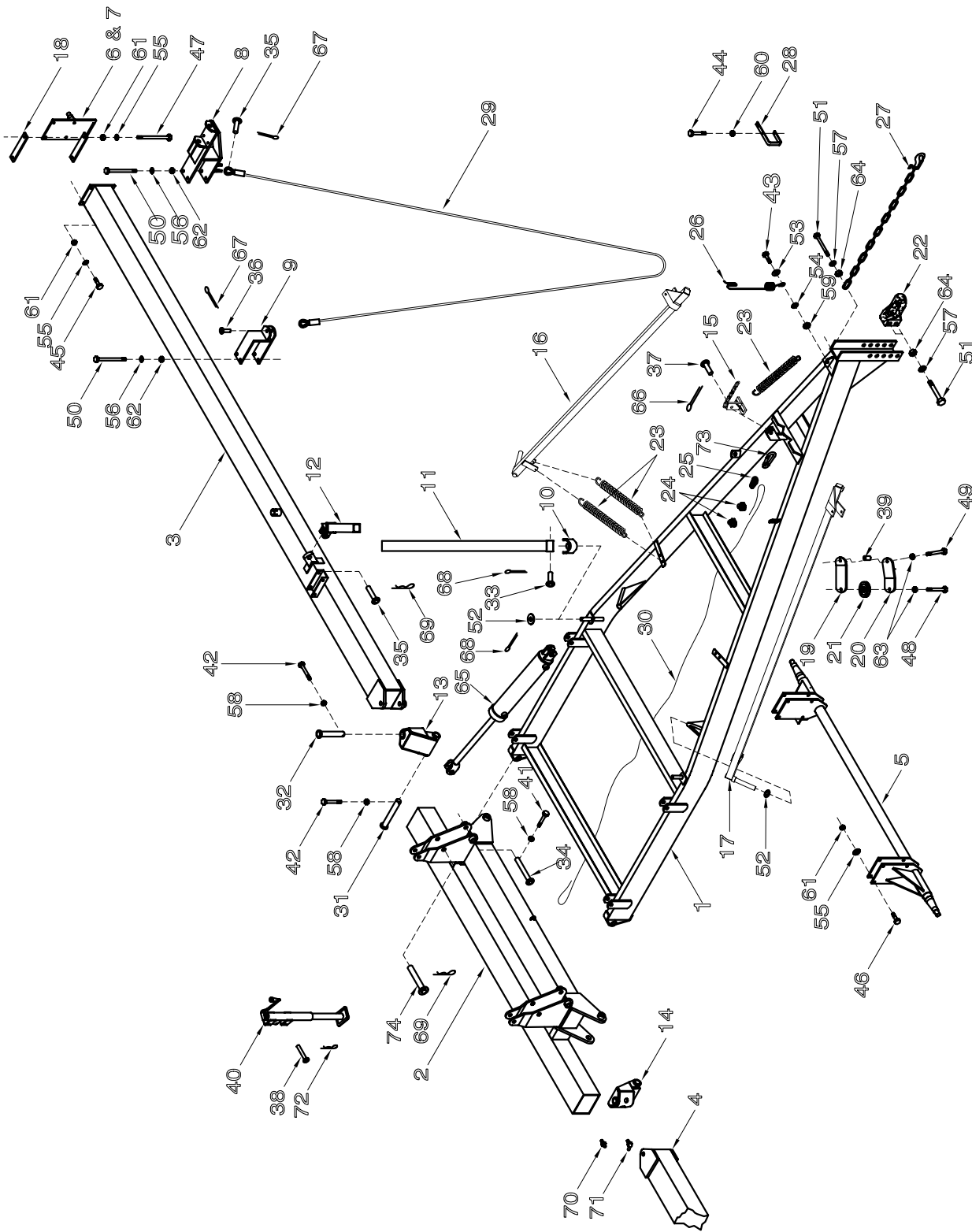
Notes

Section 1: Frame & Hitch

Section Contents

Field Pro 50 & 70 Ft Models	1-2
Transport Axle	1-5
Hitch Jack	1-6

Frame & Hitch Field Pro 50 & 70 Ft Models



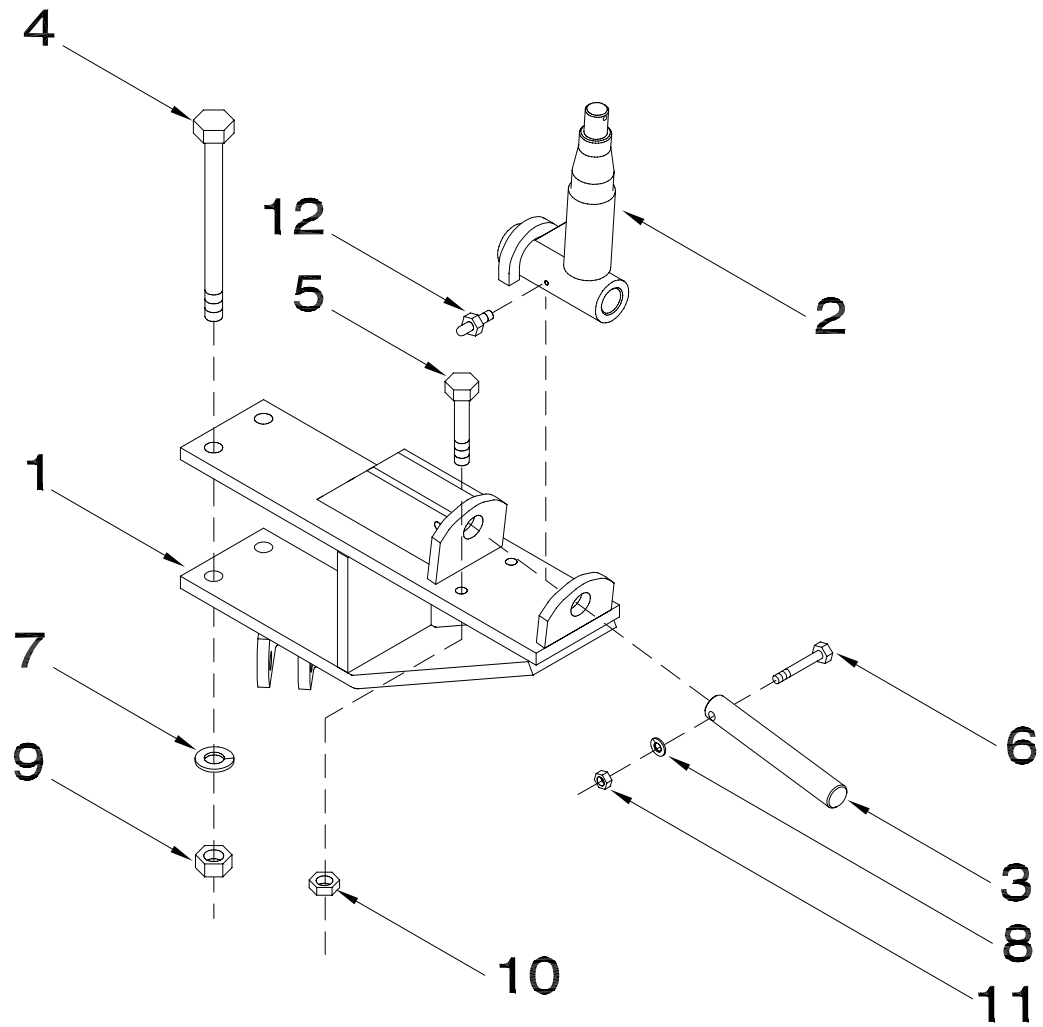
Frame & Hitch - Field Pro 50 & 70 Ft Models

Item	Part No.	Description	No: Used	
			50 ft	70 ft
1	H28571	Hitch Cart	1	1
2	H27962	Main Frame	1	1
3	H27981	Left Wing	1	-
3A	H27983	Left Wing	-	1
4	H27982	Right Wing	1	-
4A	H27984	Right Wing	-	1
5	H27979	Main Axle	1	1
6	H27967	Left End Axle	1	1
7	H27966	Right End Axle	1	1
8	H28191	Transport Axle	2	2
9	H18209	Cable Bracket	-	1
10	H28311	Knuckle - Back-Up Arm	2	2
11	H28314	Outer Back-Up Arm	2	2
12	H28317	Inner Back-Up Arm	2	2
13	H27998	Left Main Hinge	1	1
14	H27999	Right Main Hinge	1	1
15	H18312	Cable Arm Lock	1	1
16	H28481	Left Cable Arm	1	1
17	H28482	Right Cable Arm	1	1
18	H27965	Clamp Strap	2	2
19	H27974	Top Cable Strap	-	2
19A	H28568	Top Cable Strap	2	-
20	H27973	Bottom Cable Strap	-	2
20A	H28569	Bottom Cable Strap	2	-
21	W-335	Cast Cable Pulley	-	2
21A	H27980	Cable Bushing	2	-
22	H27959	Hitch Clevis	1	1
23	H-4695	Spring	5	5
24	D-4834	Cable Clamp	4	4
25	D-5063	Cable Thimble	2	2
26	W-7	Hose Holder	1	1
27	C18760	Safety Chain - 3/8 20,000 Lbs	1	1
28	C18758	Safety Chain Support	1	1
29	H18283	Wing Cable - 1/2 x 264 Lg (Prior To 1998)	2	-
	H-4337	Wing Cable - 1/2 x 300 Lg (1998 To Present)	2	-
	H28325	Wing Cable - 1/2 x 666 Lg	-	2
30	H18216	Cable - 1/4 Dia	1	1
31	H34370	Hinge Pin - 1 1/2 Dia x 9 13/16 U L w/Grease Groove	2	2
32	H34371	Hinge Pin - 1 1/2 Dia x 7 7/8 UL w/Grease Groove	2	2
33	H27598	Pin Back-Up Arm - 1 1/8 Dia x 4 15/64 UL	2	2
34	H-3955	Pin - 1 1/8 Dia x 7 UL	2	2
35	D-5130	Pin - 1 Dia x 2 19/32 UL	2	2
36	H18205	Pin - 3/4 Dia x 2 3/8 UL	2	4
37	W-1629	Pin - 3/4 Dia x 1 7/16 UL	1	1
38	H10462	Pin - Hitch Jack	2	4
39	H27980	Bushing	4	2
40	H27963	Top Wind Jack	1	2
41	W-480	Hex Bolt - 3/8 x 2 1/2 Lg	2	2
42	W-481	Hex Bolt - 3/8 x 3 1/2 Lg	4	4
43	W-486	Hex Bolt - 1/2 x 1 1/2 Lg W/ 3/4 Thread	1	1
44	D-5519	Hex Bolt - 1/2 x 3 1/4 Lg	1	1
45	W-498	Hex Bolt - 5/8 x 1 3/4 Lg	8	8
46	W-504	Hex Bolt - 5/8 x 4 Lg	8	8

Frame & Hitch - Field Pro 50 & 70 Ft Models

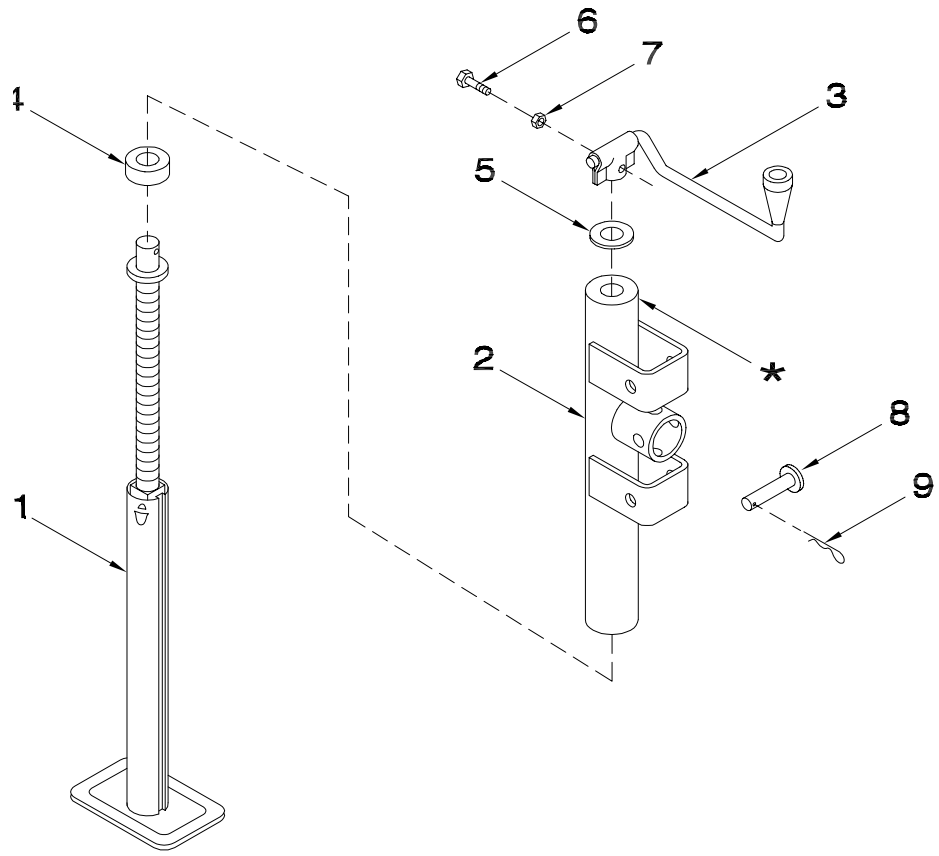
Item	Part No.	Description	No: Used	
			50 ft	70 ft
47	C-4708	Hex Bolt - 5/8 x 8 Lg	4	4
48	W-510	Hex Bolt - 3/4 x 3 1/2 Lg	-	2
49	S-1175	Hex Bolt - 3/4 x 4 1/2 Lg	2	2
50	N11621	Hex Bolt - 3/4 x 8 1/2 Lg	4	8
51	C-699	Hex Bolt - 1 x 6 Lg	3	3
52	H-4693	Flat Washer - 1 1/4	8	8
53	C-333	Flat Washer - 1/2	2	2
54	W-525	Lockwasher - 1/2	1	1
55	W-526	Lockwasher - 5/8	12	12
56	W-527	Lockwasher - 3/4	4	8
57	C-705	Lockwasher - 1	3	3
58	M-3388	Locknut - 3/8	6	6
59	W-516	Hex Nut - 1/2	1	1
60	F-3405	Lock Nut - 1/2	1	1
61	W-517	Hex Nut - 5/8	12	12
62	W-518	Hex Nut - 3/4	4	8
63	D-5273	Lock Nut - 3/4	4	4
64	W-520	Hex Nut - 1	3	3
65	C-2069	Hydraulic Cylinder - 3 1/2 x 24 Lg	2	-
65A	C-2146	Hydraulic Cylinder - 4 x 24 Lg	-	2
66	W-1416	Cotter Pin - 3/16 x 1 1/2 Lg	1	1
67	W-535	Cotter Pin - 1/4 x 1 1/2 Lg	2	4
68	D-5238	Cotter Pin - 3/16 x 1 3/4 Lg	4	4
69	D-5240	Hair Pin - #6	6	6
70	S-752	Grease Zerk - 1/4 Str	2	2
71	F-3009	Grease Zerk - 1/4 x 45 Deg	2	2
72	W-131	Hair Pin - #9	2	4
73	H32520	Removeable Link	1	1
74	F-3645	Transport Pin - 1 Dia x 5 1/4 U L	2	2
		Note: Decals Are Not Shown see 'Lighting and Safety Signs' for locations.		
	H33537	Decal - Field Pro	2	2
	D-5056	Decal - Caution Stand Clear	2	2
	C13704	Decal - Wings Falling	3	3
	H18274	Decal - Danger	2	2
	H18270	Decal - Caution	2	2
	C-3902	Decal - Morris	2	2
	C-4262	Decal - Caution Hydraulics	1	1
	D13705	Decal - Warning	1	1
	N24301	Decal - Caution	1	1
	C31201	Decal - Caution	1	1
	H27945	Decal - Important	2	2
	N34477	Reflector "Amber"	8	8
	N34476	Reflector "Red"	4	4
	N34478	Reflector "Red Orange"	4	4

Frame & Hitch Transport Axle



Item	Part No.	Description	Qty
1	H28191	Axle Mounting Bracket	1
1A	H28908	Axle Mounting Bracket (50' Only)	1
2	H-4315	Transport Axle	1
3	H-4332	Transport Axle Pin	1
4	N11621	Hex Bolt - 5/8 x 8 1/2 Lg	2
5	W-500	Hex Bolt - 5/8 x 2 1/4 Lg	2
5A	W-499	Hex Bolt - 5/8 x 2 Lg (50' Only)	2
6	H-1790	Hex Bolt - 3/8 x 2 3/4 Lg	1
7	W-527	Lockwasher - 3/4	2
8	W-523	Lockwasher - 3/8	1
9	W-518	Hex Nut - 3/4	2
10	C-1472	Jam Nut - 5/8	2
11	W-514	Hex Nut - 3/8	1
12	S-752	Grease Zerk - 1/4 Str	1

Frame & Hitch Hitch Jack



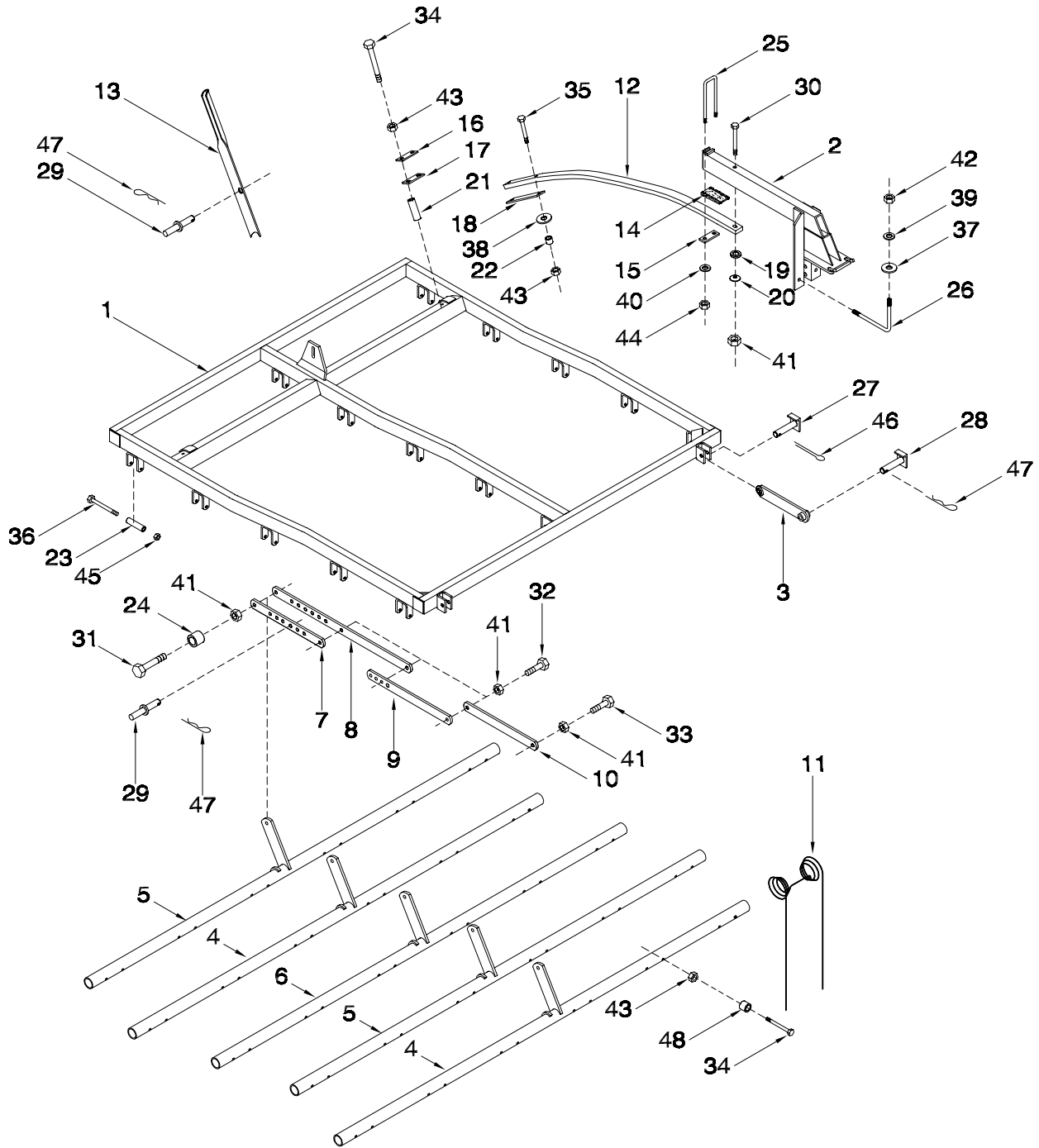
Item	Part No.	Description	Qty
1	H29011	Inner Tube Screw Assembly	1
2	N19966	Outer Tube	1
3	N19967	Handle Assembly	1
4	N19968	Thrust Bearing	1
5	N19969	Flatwasher	1
6	W-473	Hex Bolt - 5/16 x 1 1/2 Lg	1
7	D-5272	Locknut - 5/16 Unitorque	1
8	H10462	Button Head Pin	2
9	W-131	Hair Pin - 148 Dia (#9)	2
	H27963	Hitch Jack Assembly (Includes All Above Items)	

Section 2: Harrows

Section Contents

Harrow Section	2-2
----------------------	-----

Harrow Harrow Section



Harrow - Harrow Section

Item	Part No.	Description	Qty
1	H27933	Harrow Fame	1
2	H27950	Harrow Spring Arm	2
3	H27953	Pull Arm	2
4	H27927	1st and 4th Harrow Pipe	2
5	H27931	2nd and 5th Harrow Pipe	2
6	H27929	3rd Harrow Pipe	1
7	H28793	Rear Adjusting Strap	1
8	H28794	Rear Long Adjusting Strap	1
9	H27924	Middle Adjusting Strap	1
10	H27923	Front Adjusting Strap	1
11	H27900	Tine	30
11a	H28676	Half Tine - Right	1
11b	H28675	Half Tine - Left	1
12	H27902	Spring	2
13	H27971	Adjusting Handle - Tine	1
14	H27934	Wedge - Cast	2
15	C18616	Clamp Strap	2
16	H27919	Wear Plate Backing Strap	2
17	H27920	Wear Plate	2
18	H27915	Wear Strip	2
19	H28554	Convex Washer	2
20	H28555	Concave Washer	2
21	H27918	Wear Plate Spacer	4
22	D-5064	Bushing	4
23	H27907	Spacer - Harrow Pipe Retainer	15
24	H27972	Bushing - Tine Adjustment	1
25	H-4321	"U" - Bolt - 1/2 x 2 x 6	2
26	H27947	"L" - Bolt - 5/8	4
27	H28486	Pin - 3/4 Dia w/Retainer x 2 1/16 UL	2
28	H27951	Pin - 3/4 Dia w/Retainer x 2 7/8 UL	2
29	H28545	Pin - Tine Adjustment	1
30	C-507	Hex Bolt - 5/8 x 6 Lg	2
31	W-503	Hex Bolt - 5/8 x 3 1/2 Lg	1
32	W-501	Hex Bolt - 5/8 x 2 1/2 Lg	3
33	W-499	Hex Bolt - 5/8 x 2 Lg	1
34	W-493	Hex Bolt - 1/2 x 3 1/2 Lg	64
35	W-490	Hex Bolt - 1/2 x 2 1/2 Lg	4
36	C-1550	Hex Bolt - 3/8 x 4 Lg	15
37	W-540	Flat Washer - 5/8 ID x 1 3/4 OD	4
38	S-1925	Flat Washer - 1/2	4
39	W-526	Lock Washer - 5/8	4
40	W-525	Lock Washer - 1/2	4
41	S-1197	Lock Nut - 5/8	7
42	W-517	Hex Nut - 5/8	4
43	F-3405	Lock Nut - 1/2	68
44	W-516	Hex Nut - 1/2	4
45	M-3388	Lock Nut - 3/8	15
46	W-1416	Cotter Pin - 3/16 x 1 1/2 Lg	4
47	D-5240	Hair Pin - 3/16	4
48	H28680	Bushing Tine	60

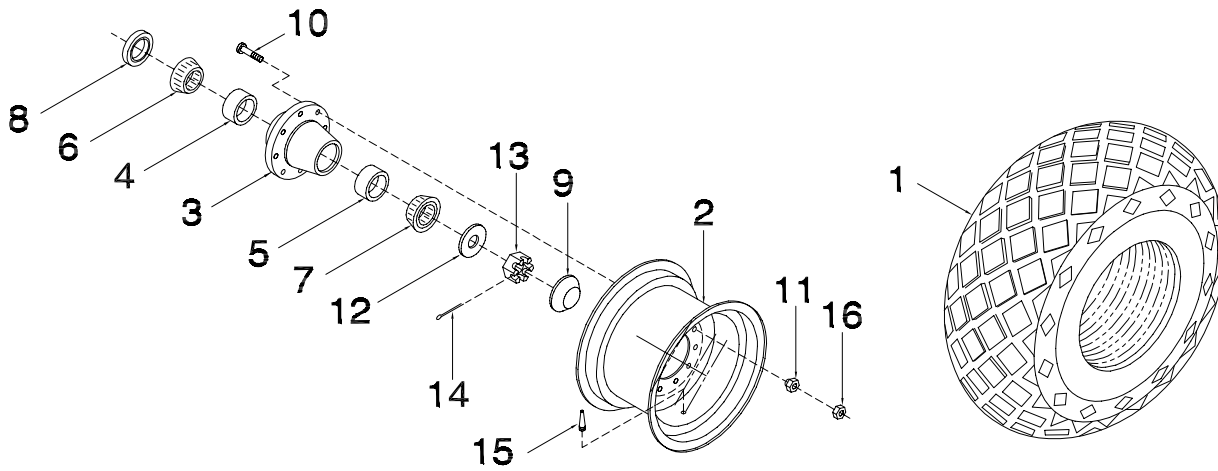
Notes

Section 3: Axle & Wheels

Section Contents

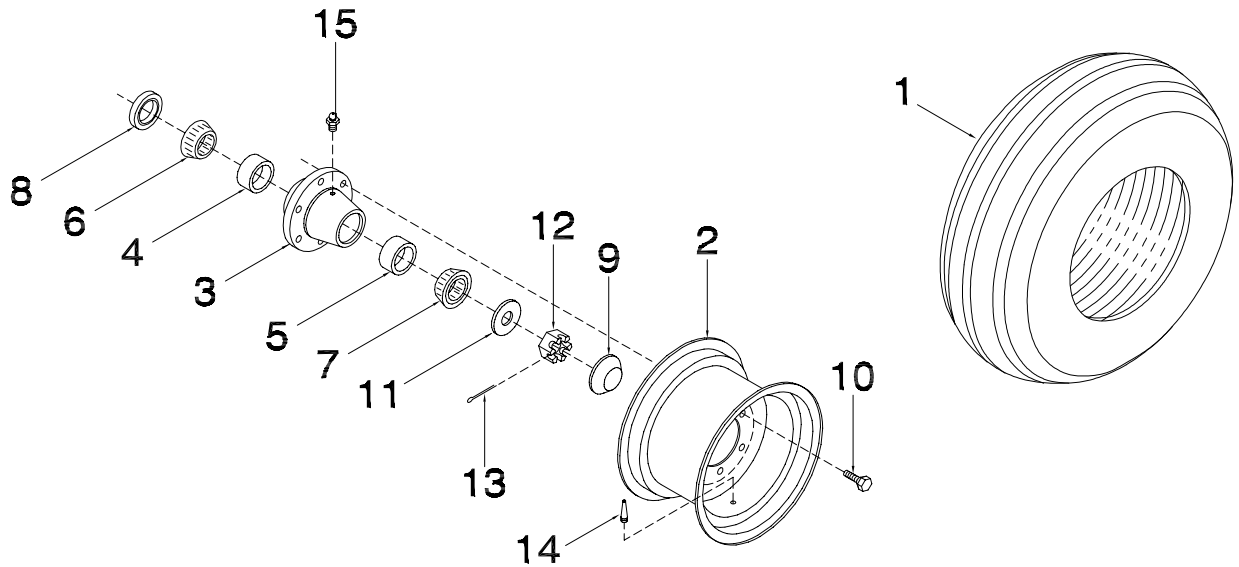
Main Frame Wheel Assembly	3-2
Wing Wheel Assemblies	3-3

Axles & Wheels Main Frame Wheel Assembly



Item	Part No.	Description	Qty
1	N16024	Tire - 16.5L x 16.1 (6 Ply)	1
2	N16025	Rim - W14C x 16.1	1
3	N19173	Hub - (Includes Items 4, 5 & 10)	1
4	N19167	Inner Cup - 382A	1
5	N19168	Outer Cup - LM501310	1
6	N19169	Inner Bearing Cone - 387 AsS	1
7	N19170	Outer Bearing Cone - LM151349	1
8	N19172	Shaft Seal - 2 1/2	1
9	N19171	Dust Cap	1
10	N19727	Press-In Bolt - 5/8-18 Unf x 2 1/2 Lg	8
11	N19586	Tapered Wheel Nut - 1 1/4-12 UNF	8
12	D-5499	Flatwasher - 1 5/16 ID x 2 3/4 OD	1
13	N19484	Slotted Hex Nut - 1 1/4-12 UNF	1
14	D-5239	Cotter Pin - 1/4 x 2 1/4 Lg	1
15	W-3328	Valve Stem Assembly	1

Axles & Wheels Wing Wheel Assemblies



Item	Part No.	Description	Qty
1	C-1491	Tire - 9.5L x 15 (6 Ply Rating) End Axles	2
1A	C-1490	Tire - 9.5L x 15 SI (8 Ply Rating) Transport Axles - 50' (Prior To July 2002)	2
1A	H34353	Tire - ST225/75R15 Load Range D Transport Axles - 50' (July 2002 To Present)	2
1B	K-5688	Tire - 11L x 15 FI Load Range D (8 Ply) Transport Axles - 70'	2
2	C-1473	Rim - 15 x 8 (6 Bolt)	As eq'd
Items Below Are Given Per Hub Assembly			
3	C-1463	Heavy Duty Hub (Includes Items #4, 5 & 15)	1
4	W-1538	Inner Bearing Cup	1
5	W-1537	Outer Bearing Cup	1
6	W-1475	Inner Wheel Bearing	1
7	W-1474	Outer Wheel Bearing	1
8	C-1521	Seal	1
9	C-1522	Dust Cap	1
10	W-1383	Wheel Stud Bolt - 9/16 x 1 11/16 Lg	6
11	C-3258	Washer - 2 OD x 1 1/16 x 3/16	1
12	S-1311	Slotted Nut - 1 SAE	1
13	W-1416	Cotter Pin - 3/16 x 1 1/2 Lg	1
14	W-3328	Valve Stem End Axles	1
14A	C17348	Valve Stem Transport Axles	1
15	S-752	Grease Zerk - 1/4 NPT Straight	1

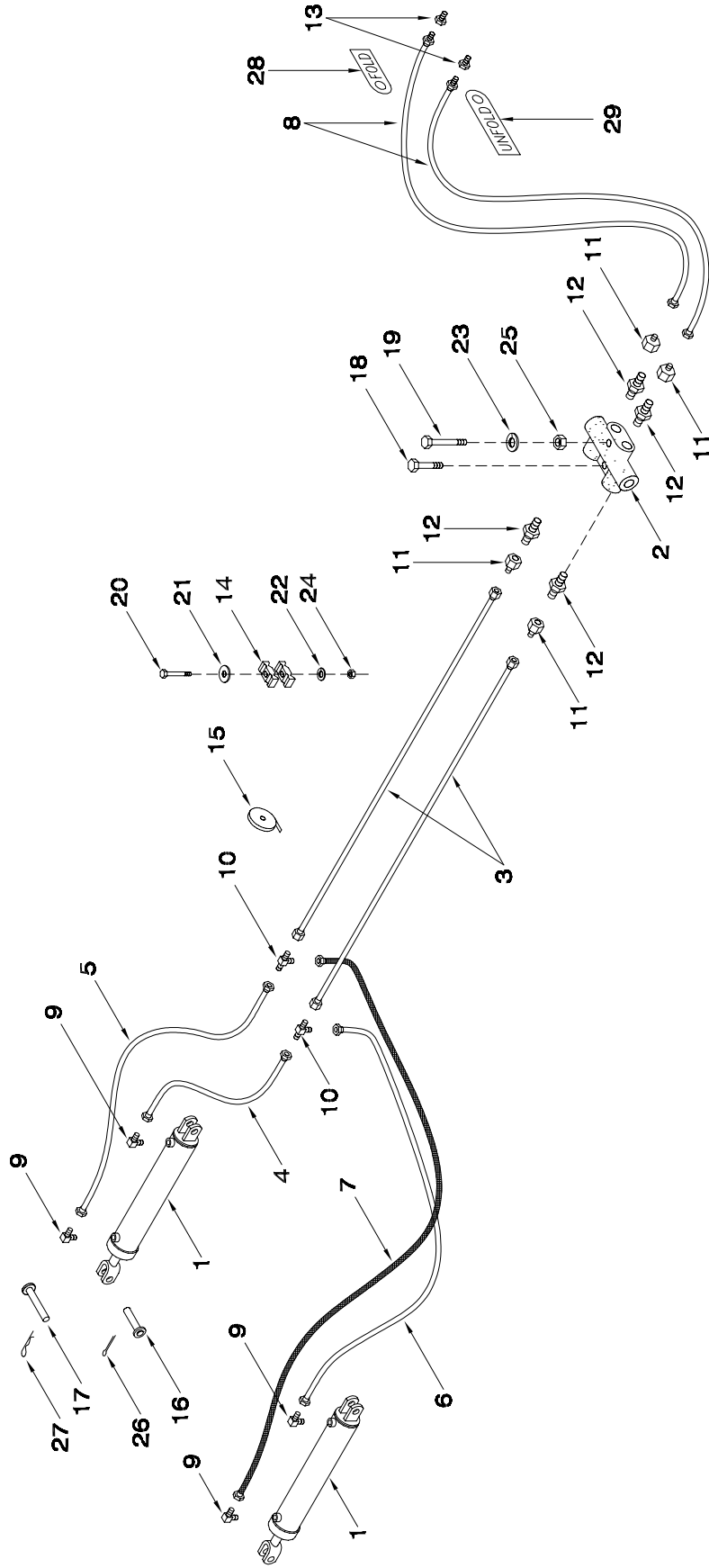
Notes

Section 4: Hydraulics

Section Contents

50 & 70 Ft Models	4-2
Cylinders	4-4

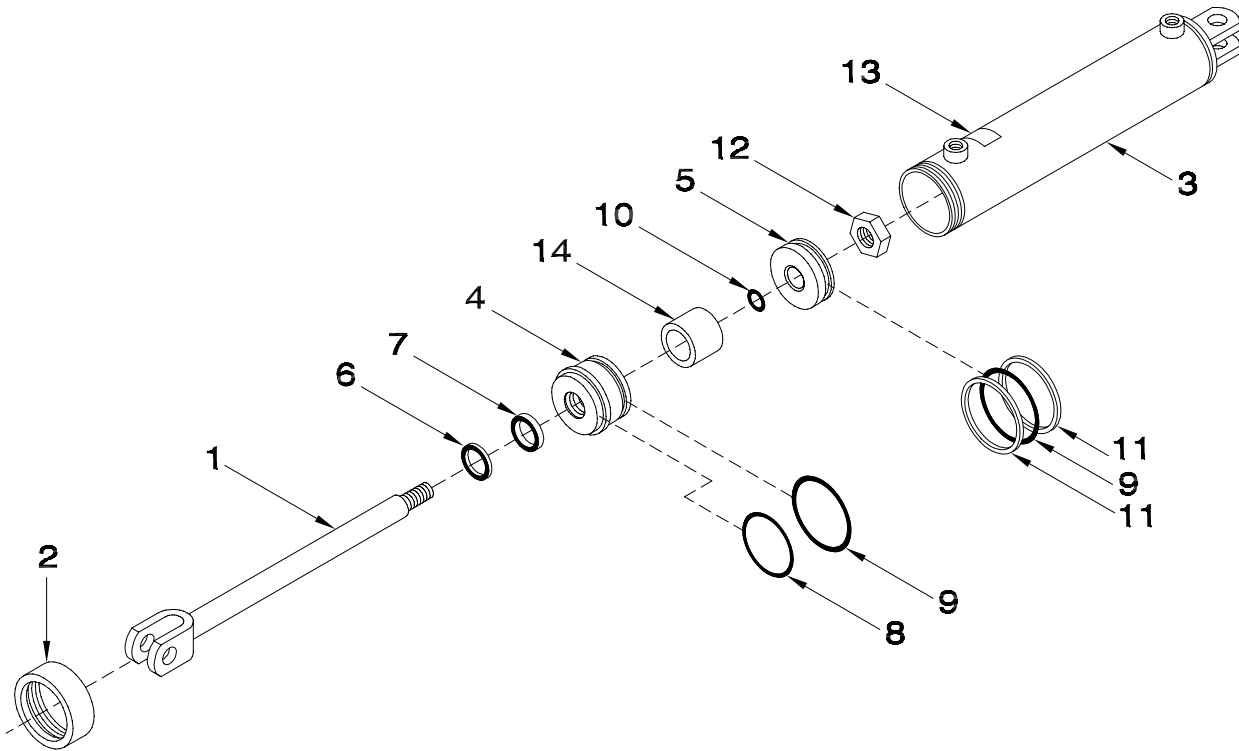
Hydraulics 50 & 70 Ft Models



Hydraulics- 50 ft & 70 ft Models

Item	Part No.	Description	No: Used	
			50 ft	70 ft
1	C-2069	Cylinder - 3 1/2 x 24	2	-
1A	C-2146	Cylinder - 4 x 24	-	2
2	C16880	Line Lock Valve - Metro	1	1
3	H18971	Tube - 3/8 x 118 Lg	2	2
4	C-4552	Hose - 1/4 x 24 Lg w/9/16 - 18 FJIC	1	1
5	C14835	Hose - 1/4 x 36 Lg w/9/16 - 18 FJIC	1	1
6	H18266	Hose - 1/4 x 80 Lg w/9/16 - 18 FJIC	1	1
7	H18267	Hose - 1/4 x 96 Lg w/ 9/16 - 18 FJIC	1	1
8	C-4382	Hose - 1/4 x 96 Lg w/ 9/16 - 18 FJIC x 1/4 MNPT	2	2
9	F-3864	Elbow 90 Deg - 1/4 MNPT x 9/16 - 18 MJIC	4	4
10	C-4393	Tee - Male - 9/16 x 18 MJIC	2	2
11	F10384	Connector - 7/8 - 14 FJIC x 9/16 - 18 MJIC	4	4
12	C14840	Connector - 1/2 MORB x 5/8 MJIC	4	4
13	C-686	Connector - 1/2 MNPT x 1/4 FJIC	2	2
14	C-4698	Nylon Oil Line Clamp	4	4
15	W-3022	Teflon Tape	1	1
16	C-1429	Pin - 1 Dia x 3 3/8 UL	4	4
17	F-3645	Pin - 1 Dia x 5 1/4 UL	2	2
18	C-3035	Hex Bolt - 5/16 x 1 3/4 Lg	1	1
19	F-4716	Hex Bolt - 5/16 x 2 3/4 Lg	1	1
20	W-479	Hex Bolt - 3/8 x 2 1/4 Lg	2	2
21	W-538	Flat Washer - 3/8	2	2
22	W-523	Lock Washer - 3/8	2	2
23	W-522	Lock Washer - 5/16	2	2
24	W-514	Hex Nut - 3/8	2	2
25	W-513	Hex Nut - 5/16	2	2
26	W-535	Cotter Pin - 1/4 x 1 1/2 Lg	4	4
27	BW-11	Hair Pin - #8	2	2
28	S29960	Tag - Hose ID - Wing Lift - Fold	1	1
29	S29961	Tag - Hose ID - Wing Lift - Unfold	1	1

Hydraulics Cylinders



Hydraulics - Cylinders

Item	Part No.	Description	Qty
C-2069- 3 1/2 x24 - CYLINDER			
1	C-2086	Shaft - 1 1/4 Dia	1
2	C-2028	Collar	1
3	C-2087	Barrel	1
4	C-2094	Gland	1
5	C15412	Piston	1
6	C-2083	Shaft Wiper	1
7	C-2082	Shaft Seal	1
8	C-2214	Gland Collar O-Ring	1
9	C-2029	O-Ring	2
10	C-2187	O-Ring - 1 OD x 7/8 ID	1
11	C15385	Back-Up Washer	2
12	C-2017	Shaft Nut - 7/8 SAE Cleveloc	1
13	C-2088	Part No Plate	1
	C-2069	Cylinder Assembly (Includes All Above Items)	
	C-2085	Seal Kit (Includes Items #6, 7, 8, 9, 10 & 11)	
C-2146 - 4 x 24 - CYLINDER			
1	C12842	Shaft	1
2	C-2023	Collar	1
3	C-2158	Barrel	1
4	C-2153	Gland	1
5	C12843	Piston	1
6	C-2136	Shaft Wiper	1
7	C-2135	Shaft Seal	1
8	C-2215	Gland Collar O-Ring	1
9	C-2030	O-Ring	2
10	C13282	Shaft Static Seal	1
11	C15386	Back-Up Washer	2
12	C13763	Shaft Nut	1
13	C-2161	Part No Plate	1
	C-2146	Cylinder Assembly (Includes All Above Items)	
	C-2150	Seal Kit (Includes Items #6, 7, 8, 9, 10 & 11)	

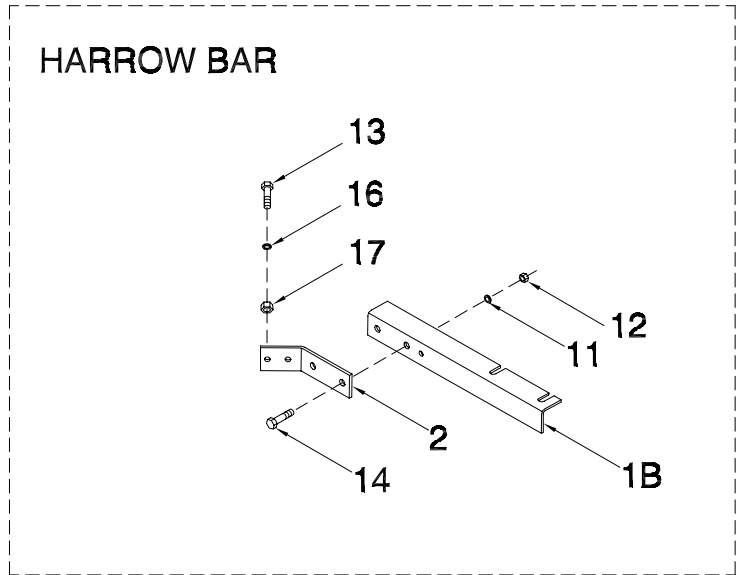
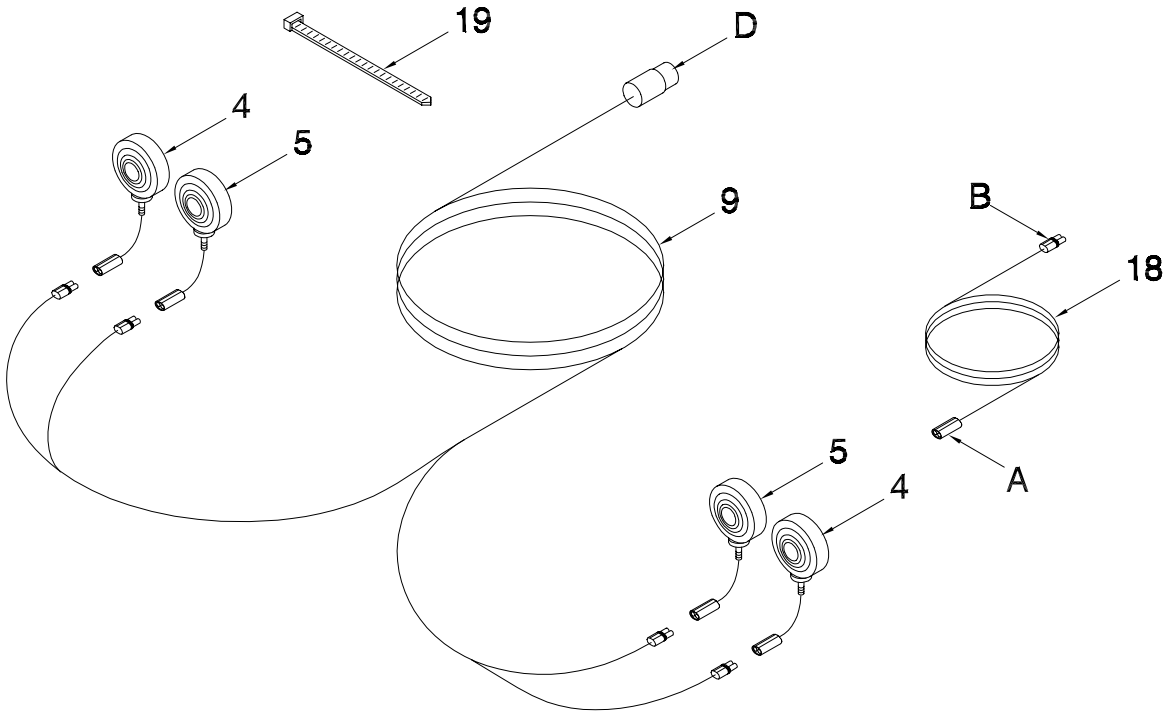
Notes

Section 5: Lighting and Safety Signs

Section Contents

Marking Lights	5-2
Safety Signs	5-4

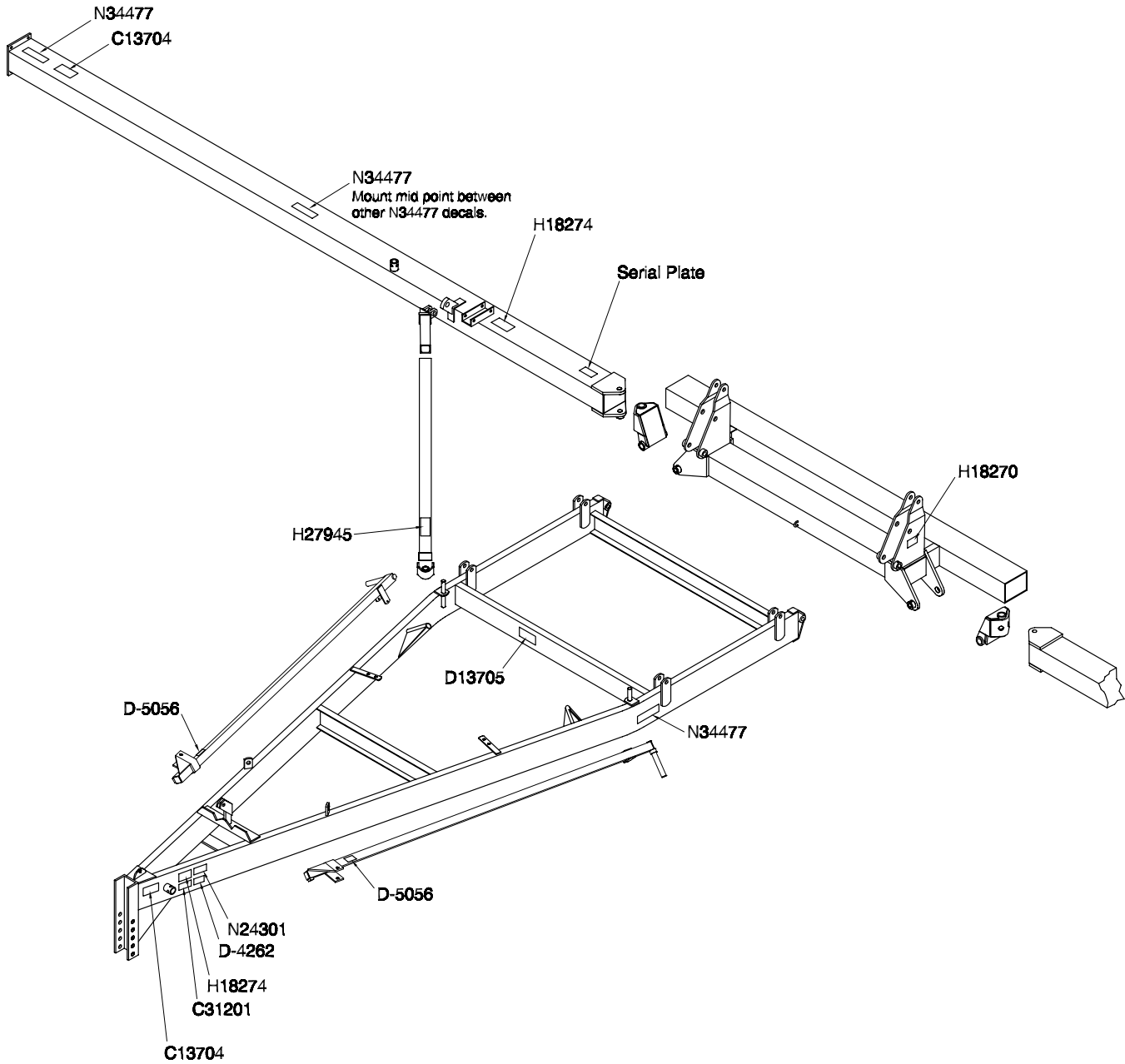
Lighting Marking Lights



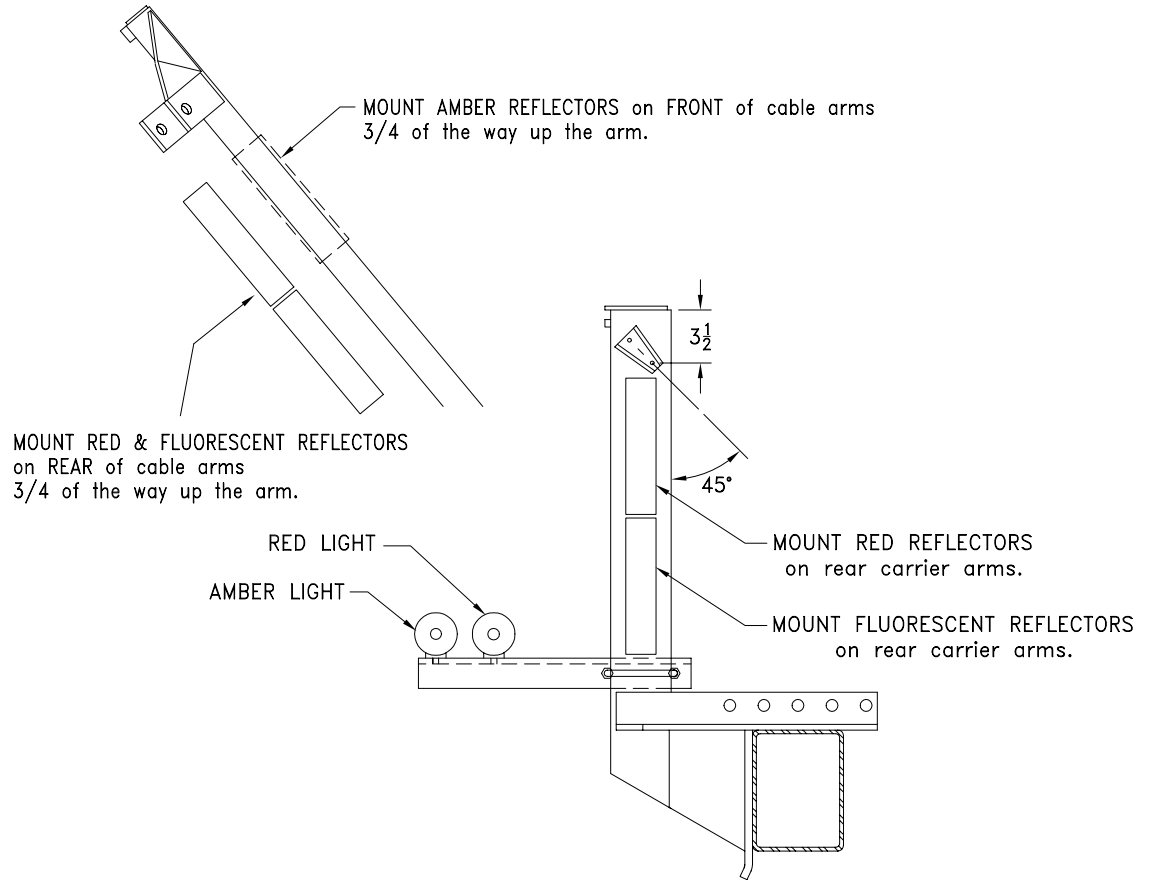
Lighting - Marking Lights

Item	Part No.	Description	Qty
1B	H31430	Bracket - Mounting	2
2	H31428	Plate - Mounting	2
3	*****		
4	C32765	Light - Amber	2
5	C32766	Light - Red	2
6	*****		
7	*****		
8	*****		
9	C31437	Wiring Harness - Main	1
10	*****		
11	W-523	Lockwasher - 3/8	8
12	W-514	Hex Nut - 3/8	8
13	W-485	Hex Bolt - 1/2 x 1 1/4 lg	4
14	W-475	Hex Bolt - 3/8 x 1 lg	4
15	*****		
16	W-525	Lockwasher - 1/2	4
17	W-516	Hex Nut - 1/2	4
18	C31439	Wiring Extension - 2 Pin - 10 ft	3
19	D-4951	Nylon Tie Strap - 7 3/8 lg	15
	C32761	Red Acrylic Lens	
	C32762	Amber Acrylic Lens	
	C32515	Bulb - #1156 (Amber Light)	
	C32656	Bulb - #1157 (Red Light)	
A	C32681	Receptacle Connector Assembly - GRAY - 2 Pin	
B	C32682	Plug Connector Assembly - GRAY - 2 Pin	
D	C32690	Connector Assembly - 7 Pin Plug (Complete with Cable Protector Spring)	
	C32688	Interior - Plug - 7 Pin Connector	
	C32689	Cable Protector Spring - Plug - 7 Pin Connector	
		ORDER KITS THROUGH WHOLE GOODS ONLY	
	H30756	50' Heavy Harrow Light Kit-Includes items 1B, 4-9, 10A, 11, 12, 19A, 19B, and (Qty 7) of 19	
	H30750	70' Heavy Harrow Light Kit-Includes items 1B, 4-9, 10A, 11, 12, 18 and 19, 19A, 19B	

Frames



Rear View



Notes

Index

B

BW-11 4-2

C

C-1429 4-2
 C-1463 3-3
 C-1472 1-5
 C-1473 3-3
 C-1490 3-3
 C-1491 3-3
 C-1521 3-3
 C-1522 3-3
 C-1550 2-3
 C-2017 4-5
 C-2023 4-5
 C-2028 4-5
 C-2029 4-5
 C-2030 4-5
 C-2069 1-4, 4-2, 4-5
 C-2082 4-5
 C-2083 4-5
 C-2085 4-5
 C-2086 4-5
 C-2087 4-5
 C-2088 4-5
 C-2094 4-5
 C-2135 4-5
 C-2136 4-5
 C-2146 1-4, 4-2, 4-5
 C-2150 4-5
 C-2153 4-5
 C-2158 4-5
 C-2161 4-5
 C-2187 4-5
 C-2214 4-5
 C-2215 4-5
 C-3035 4-2
 C-3258 3-3
 C-333 1-4
 C-3902 1-4
 C-4262 1-4
 C-4382 4-2
 C-4393 4-2
 C-4552 4-2
 C-4698 4-2
 C-4708 1-4
 C-507 2-3
 C-686 4-2
 C-699 1-4
 C-705 1-4
 C12842 4-5
 C12843 4-5
 C13282 4-5
 C13704 1-4
 C13763 4-5

C14835 4-2
 C14840 4-2
 C15385 4-5
 C15386 4-5
 C15412 4-5
 C16880 4-2
 C17348 3-3
 C18616 2-3
 C18758 1-2
 C18760 1-2
 C31201 1-4
 C31437 5-3
 C31439 5-3
 C32515 5-3
 C32656 5-3
 C32681 5-3
 C32682 5-3
 C32688 5-3
 C32689 5-3
 C32690 5-3
 C32761 5-3
 C32762 5-3
 C32765 5-3
 C32766 5-3

D

D-4834 1-2
 D-4951 5-3
 D-5056 1-4
 D-5063 1-2
 D-5064 2-3
 D-5130 1-2
 D-5238 1-4
 D-5239 3-3
 D-5240 1-4, 2-3
 D-5272 1-6
 D-5273 1-4
 D-5499 3-3
 D-5519 1-2
 D13705 1-4

F

F-3009 1-4
 F-3405 1-4, 2-3
 F-3645 1-4, 4-2
 F-3864 4-2
 F-4716 4-2
 F10384 4-2

H

H-1790 1-5
 H-3955 1-2
 H-4315 1-5
 H-4321 2-3
 H-4332 1-5

H-4337 1-2
 H-4693 1-4
 H-4695 1-2
 H10462 1-2, 1-6
 H18205 1-2
 H18209 1-2
 H18216 1-2
 H18266 4-2
 H18267 4-2
 H18270 1-4
 H18274 1-4
 H18283 1-2
 H18312 1-2
 H18971 4-2
 H27598 1-2
 H27900 2-3
 H27902 2-3
 H27907 2-3
 H27915 2-3
 H27918 2-3
 H27919 2-3
 H27920 2-3
 H27923 2-3
 H27924 2-3
 H27927 2-3
 H27929 2-3
 H27931 2-3
 H27933 2-3
 H27934 2-3
 H27945 1-4
 H27947 2-3
 H27950 2-3
 H27951 2-3
 H27953 2-3
 H27959 1-2
 H27962 1-2
 H27963 1-2, 1-6
 H27965 1-2
 H27966 1-2
 H27967 1-2
 H27971 2-3
 H27972 2-3
 H27973 1-2
 H27974 1-2
 H27979 1-2
 H27980 1-2
 H27981 1-2
 H27982 1-2
 H27983 1-2
 H27984 1-2
 H27998 1-2
 H27999 1-2
 H28191 1-2, 1-5
 H28311 1-2
 H28314 1-2
 H28317 1-2

H28325 1-2
 H28481 1-2
 H28482 1-2
 H28486 2-3
 H28545 2-3
 H28554 2-3
 H28555 2-3
 H28568 1-2
 H28569 1-2
 H28571 1-2
 H28675 2-3
 H28676 2-3
 H28680 2-3
 H28793 2-3
 H28794 2-3
 H28908 1-5
 H29011 1-6
 H30750 5-3
 H30756 5-3
 H31428 5-3
 H31430 5-3
 H32520 1-4
 H33537 1-4
 H34353 3-3
 H34370 1-2
 H34371 1-2

K

K-5688 3-3

M

M-3388 1-4, 2-3

N

N11621 1-4, 1-5
 N16024 3-3
 N16025 3-3
 N19167 3-3
 N19168 3-3
 N19169 3-3
 N19170 3-3
 N19171 3-3
 N19172 3-3
 N19173 3-3
 N19484 3-3
 N19586 3-3
 N19727 3-3
 N19966 1-6
 N19967 1-6
 N19968 1-6
 N19969 1-6
 N24301 1-4
 N34476 1-4
 N34477 1-4
 N34478 1-4

S

S-1175 1-4
S-1197 2-3
S-1311 3-3
S-1925 2-3
S-752 1-4, 1-5, 3-3
S29960 4-2
S29961 4-2

W

W-131 1-4, 1-6
W-1383 3-3
W-1416 1-4, 2-3, 3-3
W-1474 3-3
W-1475 3-3
W-1537 3-3
W-1538 3-3
W-1629 1-2
W-3022 4-2
W-3328 3-3
W-335 1-2
W-473 1-6
W-475 5-3
W-479 4-2
W-480 1-2
W-481 1-2
W-485 5-3
W-486 1-2
W-490 2-3
W-493 2-3
W-498 1-2
W-499 1-5, 2-3
W-500 1-5
W-501 2-3
W-503 2-3
W-504 1-2
W-510 1-4
W-513 4-2
W-514 1-5, 4-2, 5-3
W-516 1-4, 2-3, 5-3
W-517 1-4, 2-3
W-518 1-4, 1-5
W-520 1-4
W-522 4-2
W-523 1-5, 4-2, 5-3
W-525 1-4, 2-3, 5-3
W-526 1-4, 2-3
W-527 1-4, 1-5
W-535 1-4, 4-2
W-538 4-2
W-540 2-3
W-7 1-2



CORPORATE OFFICE AND TRAINING CENTRE

2131 Airport Drive
Saskatoon, SK, Canada S7L 7E1
Tel: (306) 933-8585 Fax: (306) 933-8626

**MANUFACTURING AND
RESEARCH & DEVELOPMENT**

85 York Road Yorkton, SK, Canada S3N 3P2
Tel: (306) 783-8585 Fax: (306) 782-5250

MANUFACTURING

284 - 6th Ave. N.W.
Minnedosa, MB, Canada R0J 1E0
Tel: (204) 867-2713 Fax: (204) 867-2678

UNITED STATES OFFICE

4400 Burdick Expressway E.
Minot, ND, USA 58701
Tel: (701) 852-4171 Fax: (701) 838-9444

The policy of Morris Industries Ltd. is one of continuing improvement, therefore, the company reserves the right to change any specification without notice.