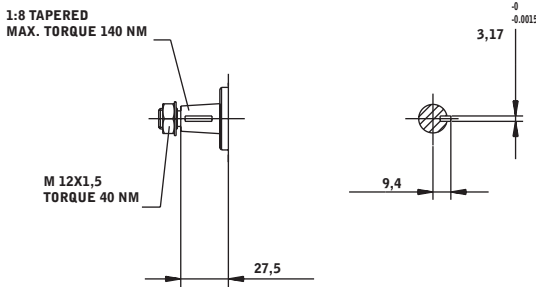
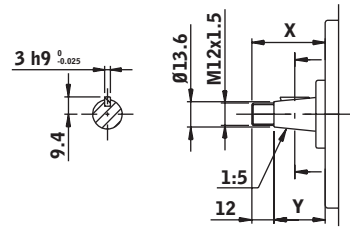


Options Saturn, groupe 2

AXE CONIQUE 1:8					10
BRIDE AVANT					
E					

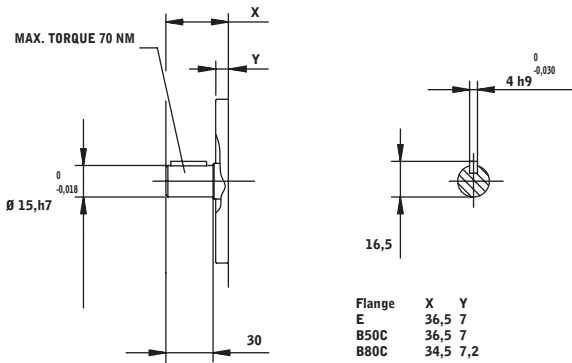


AXE CONIQUE					11
BRIDE AVANT					
B50C	B80C				



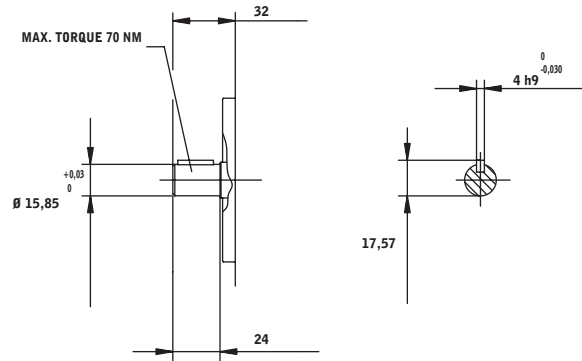
Flange	X	Y
B50C	39,5	27,5
B80C	37,5	25,5

SAE "A" AXE DROIT					12
BRIDE AVANT					
E	B50C	B80C			

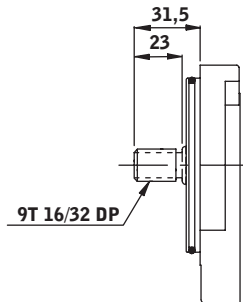


Flange	X	Y
E	36,5	7
B50C	36,5	7
B80C	34,5	7,2

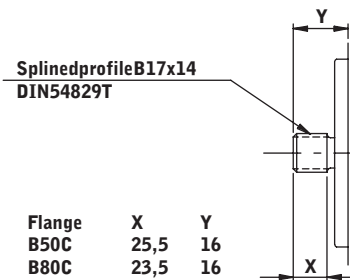
AXE DROIT					13
BRIDE AVANT					
SAE A					



AXE CANNELÉ					14
BRIDE AVANT					
SAE A					



SAE "A" AXE CANNELÉ (9D)					15
BRIDE AVANT					
B50C	B80C				

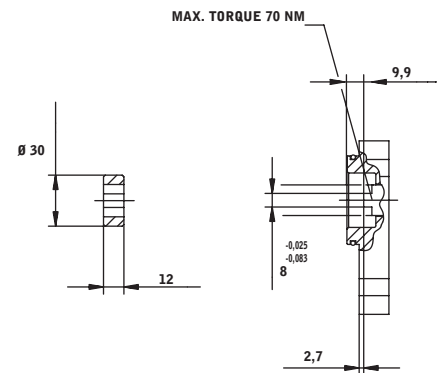
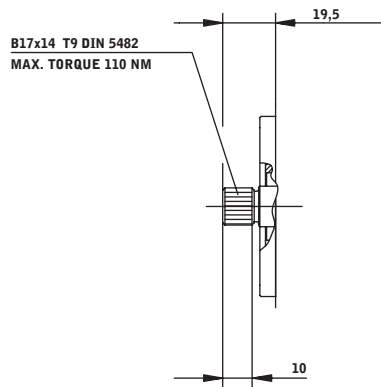


Flange	X	Y
B50C	25,5	16
B80C	23,5	16

Options Saturn, groupe 2

AXE CANNELÉ DIN 5482					16
BRIDE AVANT					
E					

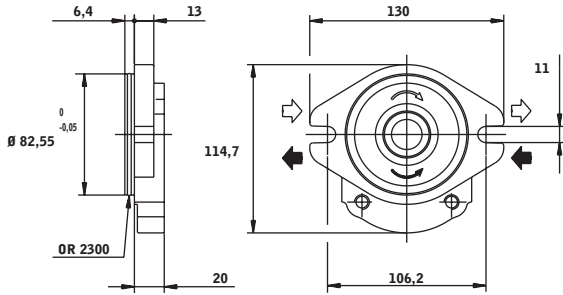
ACCOUPLLEMENT OLDHAM					17
BRIDE AVANT					
E52C					



Options Saturn, groupe 2

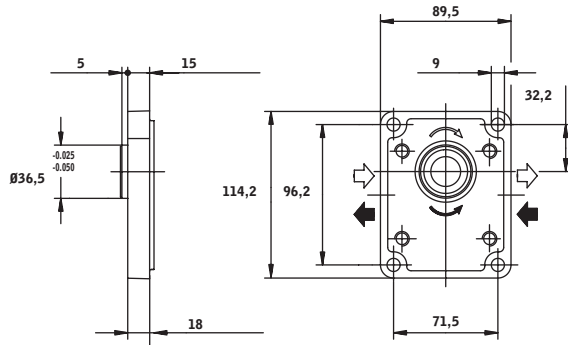
SAE "A" (2 TROUS)

A



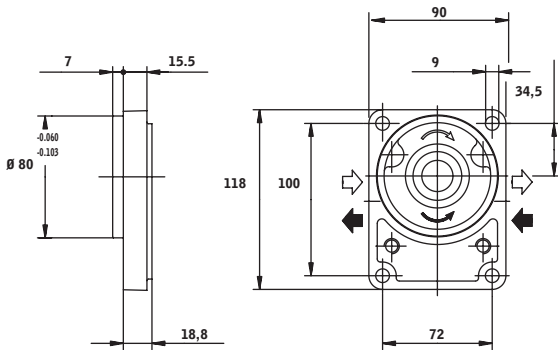
BRIDE RECTANGULAIRE

E



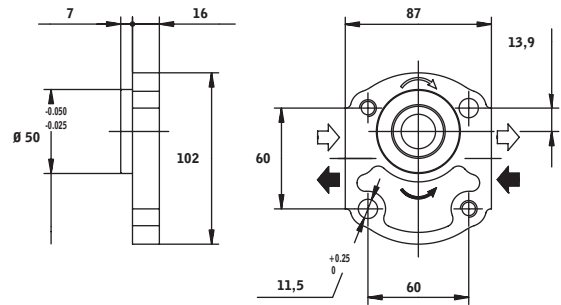
BRIDE RECTANGULAIRE (DL D)

G



BOULONS TRAVERSIERS (2 P.)

H



BOULONS TRAVERSIERS (2 P.)

I

