

ADVANCED GRAIN MOISTURE METER

C-PRO – CONNECTS TO YOUR SMARTPHONE



KNOW YOUR MOISTURE CONTENT AND AVOID SPOILAGE

Effective grain storage is essential for ensuring high crop quality and preventing loss of product. Moisture Management is the key to safe storage. C-Pro is a next-generation moisture analyser where we combine the latest technology with our combined built-in grinder and compressor for grain and seeds. We feel safe to say that this is the world's most technically advanced handheld grain moisture meter.

The key functions/benefits are:

- Know the moisture content in your grain and seeds
- Accurate and consistent results
- Easy to use; four easy steps and you are good to go
- Gain vital insights and manage documentation

A complete overview is now yours – even on the go! C-Pro – the pocket-sized digital grain moisture meter that delivers consistent results



C-PRO – DIGITAL GRAIN MOISTURE METER

Keeps track of your measurement history



C-Pro is a new pocket-sized digital grain moisture analyser that delivers consistent results. The grain or seed is ground and compressed in a single operation, which ensures state-of-the-art measurement of the sample's water content.

With the new C-Pro we have developed a special app that allows you to obtain GPS location, timestamps, notes and images for each measurement and to keep track of your measurement history. It's truly handier and more convenient than ever before.

APP FEATURES

- Sync measurements from the device to the app
- Low-energy Bluetooth connection
- Track GPS location for each measurement
- Track time of measurements
- Add images and notes to measurements
- Connect to multiple devices

C-PRO IS SUPER-EASY TO USE AND HANDLE

C-Pro has an intuitive interface with four simple buttons and a colour display that makes it easy to navigate the menu and make measurements. With the app, you can always access your old measurements, even on busy days when you're on the go.



Turn on the device by pressing the power button and use the arrow keys to select crop type.



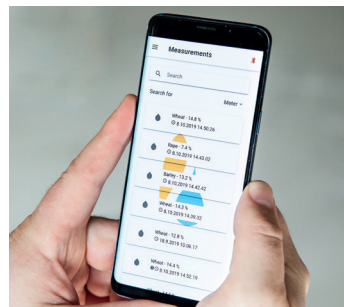
Pour the sample into the grinder and grind. The sample size is measured out in the built-in measuring cup.



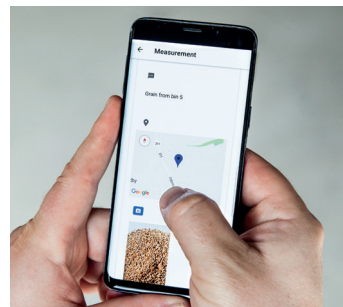
Press the test button and read the moisture content directly from the display.



Sync the C-Pro with the app "SA Moisture Connect", installed from your App Store or Play Store.



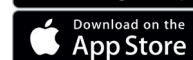
View the results in the app and compare with recent readings.



Use the app to add images and notes for documentation.

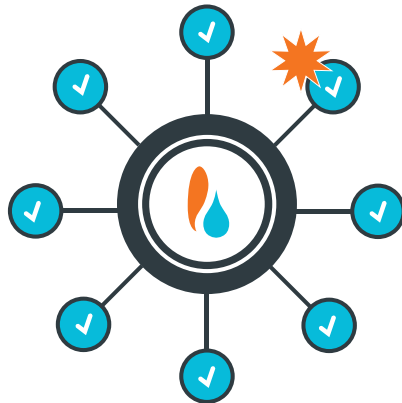
TECHNICAL SPECIFICATIONS

- Measuring range (Moisture):** 5 to 50% depending on crop type
- Operating range (Temperature):** 0 to 50 °C
- Resolution:** 0.1% moisture
- Temperature compensation:** Automatic
- Weight including case:** 2 kg
- Dimension:** 13x21x8 cm
- Battery:** 9 V Alkaline
- Display:** High resolution color display
- Accuracy:** Better than +/- 0.25% in normal moisture range by using average and calibration adjustments



The name of the C-Pro app is "SA Moisture Connect" and has been designed with user-friendliness at its core. Download the app from Google Play or the App Store. Connect with your device and you are ready to go.

If you need any help, please contact your local dealer or our technical helpdesk.



HIGHLIGHTS & FEATURES

- Digital readout with accuracy to one decimal point
- Combined grinding and compressing of sample
- Built-in measuring cups
- Automatic temperature compensation
- Grinder made of hardened galvanised steel
- Casing in shockproof ABS plastic
- Automatic calculation of average value
- Individual calibration for all grain types
- Can be updated with new moisture scales
- Delivered in an impact-resistant carrying case
- App included
- Two-year guarantee

I AGROLOG OUR VISION

We believe in grounding our work in expertise and exceptional service

We envision a world in which technology supports and drives change in the agricultural industry. In this change, AgroLog can empower users in making the right storage and harvest decisions, minimizing energy consumption and CO2 emissions. We offer a reliable product portfolio for automated grain and crop management, equipped with the latest technologies, including solid hardware and intelligent software for automated silo surveillance and control.

We strive to empower users and lift customers with technology

We develop and improve solutions based on research and continuous interactions with farmers and experts in the field. The growth of the world population and the increase of biofuel production will lead to shortages of grain in the future.

Our vision is a world where farmers and industry are awarded the full fruit of their labor and the environment is protected. AgroLog was created with this vision.

Facts about AgroLog

- Family-owned business founded by Lars Frederiksen
- Dedicated to the development and manufacturing of high-quality grain monitoring and control equipment
- In-house Danish production
- Worldwide distribution and sales in more than 50 countries
- Reliable and trustworthy business partner. We are the grain expert from harvest to post-harvest and here to help you in every way and at every step of the process
- Strong relations and support all over the world and a strong after-sales service directly from our technical center in Denmark or through your local dealer



Supertech Agroline ApS
Maltgoerervej 7
5471 Soendersoe, Denmark

Phone: +45 6481 2000
Email: info@supertech.dk
www.agrolog.io