

REVOBLOCK

Ø 200 - Ø 250

Technical catalogue

Catalogo tecnico

Technischer Katalog



Battioni®
Pagani

Setting the pace since 1953

Battioni Pagani Pompe S.p.A.

Via Enzo Ferrari, 2
43058 Sorbolo (PR) - Italy

Ph. +39 0521 663203

Fax +39 0521 663206



www.bapag.it
info@bapag.it



FEATURES

- WORKING CONDITIONS: PRESSURE = 6 bar (90 psi)
TEMPERATUR E = -15°C / +80°C
- HIGH RESISTANCE SPHEROIDAL CAST-IRON
- SUPPLIED WITH 2 O-RINGS FOR COUPLING
- SEALING SECURED BY 2 O-RINGS
- EASY GREASING
- ROTATION OF 360°
- THREAD WITH HIGH WEAR RESISTANCE MODULE
- BRAKE SYSTEM IN CASE OF LACK OF PRESSURE
- ASSEMBLY AS STRUCTURAL ELEMENT, BOTH WITH HORIZONTAL AND VERTICAL AXIS
- SUBJECT TO RISKS ANALYSIS IS ON LINE EN ISO 14121-1:2007
- TOOTHING COVERING ON REQUEST

HYDRAULIC MOTOR

- RANGE OIL TEMPERATURE -30° c +60° C
- MAX WORKING PRESSURE HYDRAULIC MOTOR 165 bar (2475 psi)
- MAX OIL CAPACITY 60 l/min.

CARATTERISTICHE

- CONDIZIONI DI ESERCIZIO : PRESSIONE = 6 bar (90 psi)
TEMPERATURA = -15° C / +80° C
- GHISA SFEROIDALE AD ALTA RESISTENZA
- FORNITURA CON 2 OR PER ACCOPPIAMENTO
- TENUTA GARANTITA DA 2 OR
- INGRASSAGGIO AGEVOLE
- ROTAZIONE DI 360°
- FILETTATURA CON MODULO AD ALTA RESISTENZA AD USURA
- IMPIANTO AUTO FRENANTE IN CASO DI MANCANZA DI PRESSIONE
- MONTAGGIO COME ELEMENTO STRUTTURALE SIA CON ASSE ORIZZONTALE CHE CON ASSE VERTICALE
- SOTTOPOSTO AD ANALISI DEI RISCHI FATTA SULLA LINEA GUIDA EN ISO 14121-1:2007
- COPERTURE DENTATURA SU RICHIESTA

MOTORI IDRAULICI

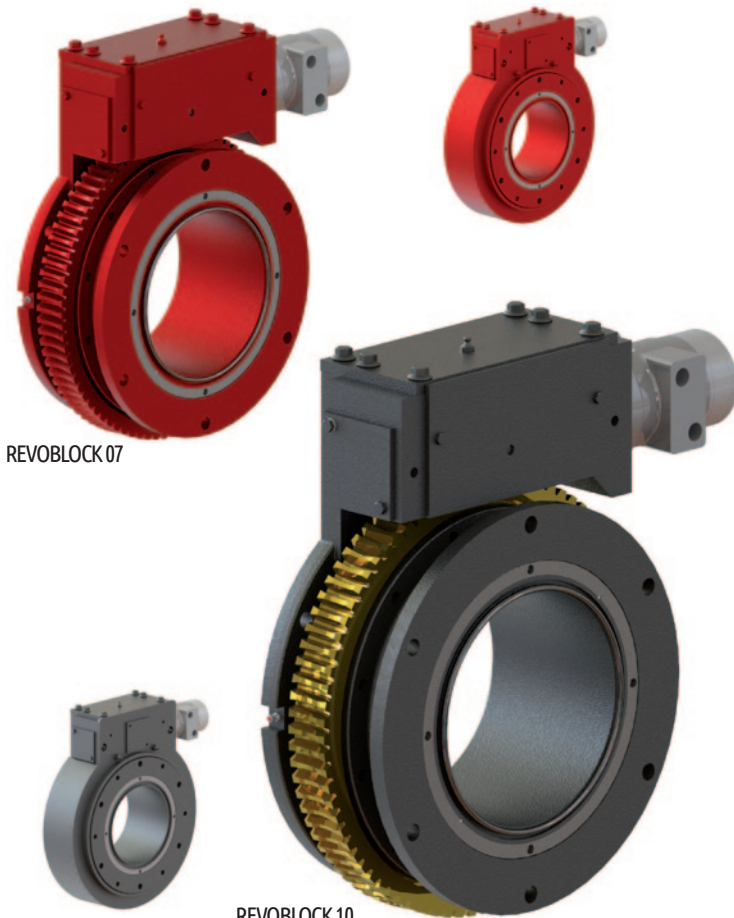
- TEMPERATURA AMMISSIBILE DELL'OLIO -30° c +60° C
- PRESSIONE MAX MOTORE IDRAULICO 165 bar CONTINUA (2475 psi)
- PORTATA MAX OLIO 60 l/min. CONTINUA

EIGENSCHAFTEN

- BETRIEBSBEDINGUNGEN : DRUCK = 6 bar (90 psi)
TEMPERATUR = -15° C / +80° C
- HOCH WIDERSTANDSFÄHIGES SPHÄROLITISCHES GUSSEISEN
- GELIEFERT MIT 2 O-RING FÜR ANSCHLUSS
- ABDICHTUNG MITHILFE VON 2 O-RINGEN GARANTIERT
- BEQUEMES SCHMIEREN
- DREHUNG UM 360°
- GEWINDE MIT VERSCHLEISSBESTÄNDIGES MODUL
- EIGENBREMSSYSTEM BEI DRUCKVERLUST
- MONTAGE ALS BAUELEMENT SOWOHL MIT HORIZONTALER ALS AUCH VERTIKALER ACHSE
- RISIKOANALYSE GEMÄSS EN ISO 14121:2007
- ABDECKUNG DER ZAHNRÄDER AUF ANFRAGE

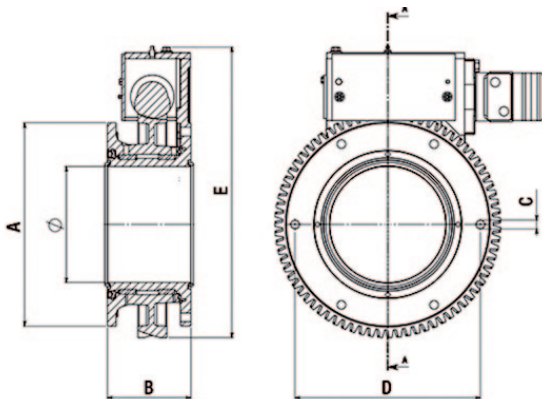
HYDRAULIKMOTOREN

- ZULÄSSIGE ÖLTEMPERATUR -30° c +60° C
- MAX DRUCK DES HYDRAULIKES MOTORS 165 bar DAUERND (2475 psi)
- MAX DURCHFLUSSMENGE ÖL 60 l/min. DAUERND



REVOBLOCK 07

REVOBLOCK 10



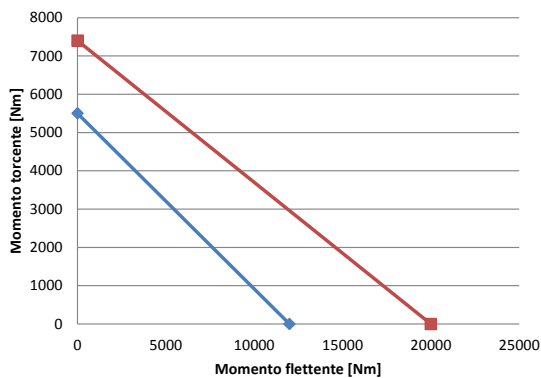
TECHNICAL DATA

	CODE	Ø	A	B	C	D	E	N. Holes	N. TEETH	Kg	Article
REVOBLOCK 07-D200 w/motor	6080200313	200	350	144	15	320	500	6	75	58	2012/I
REVOBLOCK 10-D200 w/motor	6080200289	200	350	144	15	320	500	6	80	65	2009/I
REVOBLOCK 07-D250 w/motor	6080200314	250	410	154	15	370	511	8	75	72	2012/K
REVOBLOCK 07-200 w/motor and cover	6080200318	200	350	144	15	320	526	6	75	77	2013/I
REVOBLOCK 10-200 w/motor and cover	6080200320	200	350	144	15	320	526	6	80	84	2014/I
REVOBLOCK 07-250 w/motor and cover	6080200319	250	410	154	15	370	526	8	75	91	2013/K

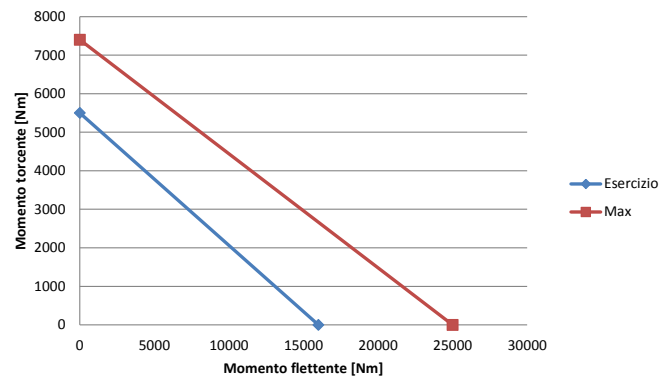


		REVOBLOCK 07-D200	REVOBLOCK 10-D200	REVOBLOCK 07-D250
OPERATING TORSION TORQUE [Nm]	Mte	5500	8000	5500
MAXIMUM TORSION MOMENT [Nm]	Mtmax	7400	10000	7400
OPERATING FLEXING MOMENT [Nm]	Mfe	12000	12000	16000
MAXIMUM FLEXING MOMENT [Nm]	Mfmax	20000	20000	25000
MINIMUM STOP AFTER USE [s]	tstop	20	10	20
MAXIMUM DURATION OF OPERATION [min]	tgo	2	2	2
SCREW GREASE QUANTITY [cl]	qworm	15	10	15
GEAR GREASE QUANTITY [cl/90°]	qgear	20	15	20
LUBRICATION FREQUENCY [uses]	fgrease	30	50	30
DURABILITY FACTOR		1	3	1
REMOVABLE GEAR		NO	YES	NO
GEAR MATERIAL HYDRAULIC MOTOR		GJS600	BRAL	GJS600

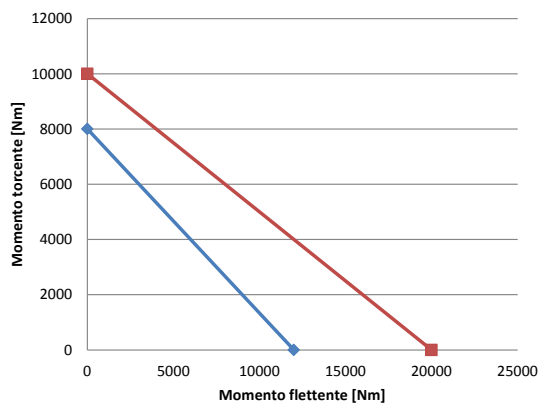
REVOBLOCK 07-D200

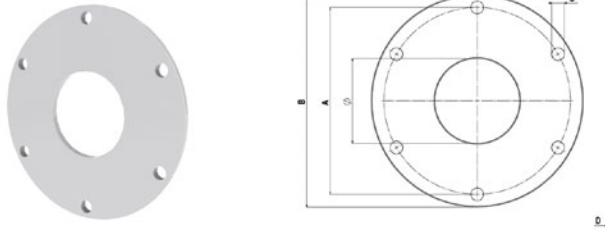


REVOBLOCK 07-D250



REVOBLOCK 10-D200





CODE	Ø	A	B	C	D	N. Holes	Kg	Article
5010401003	200	320	350	15	10	6	4,8	2002/H
5010401004	250	370	410	15	10	8	7	2002/i