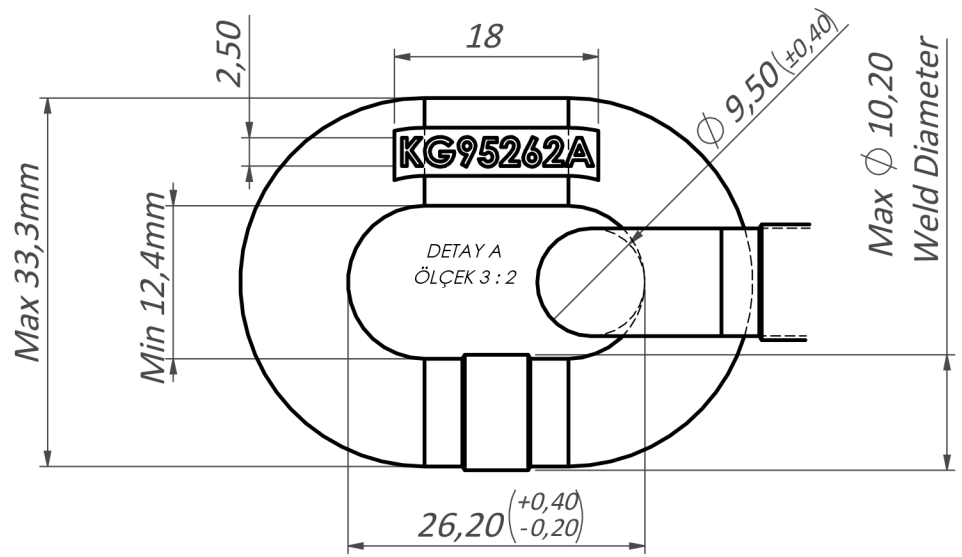
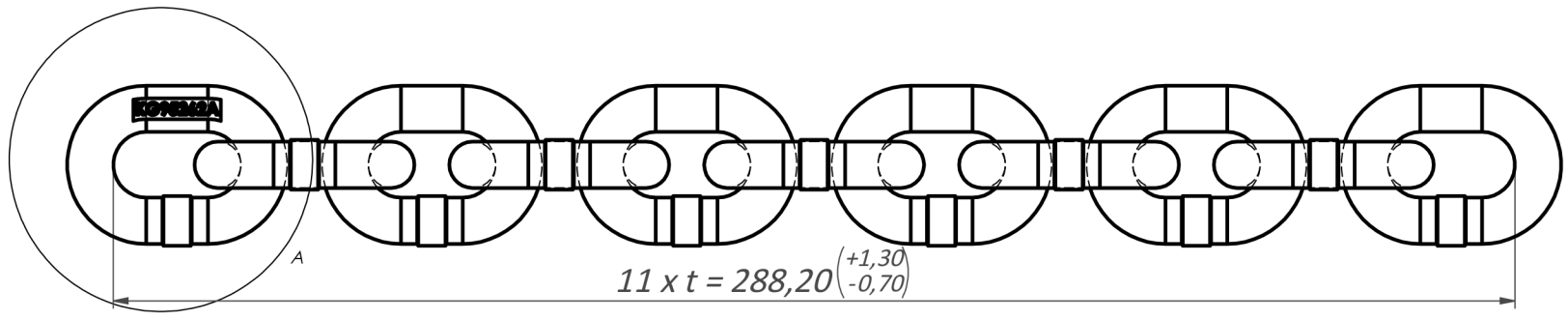


DIN-32895-Ø9,5x26,2x13,5mm Chain (KG95262A)



Properties & Notes		Tolerances for Total Meters in Production	
Material	Alloy Steel		Min : 995,6mm
Standards for manufacturing and testing	DIN -32895	0,995mt - 38link	Max : 998,6mm
Breaking Force (BF)	Min 100 kN	5,004mt - 191link	Min : 5004,2mm
Manufacturing Proof Force (MPF)	62,5 kN	10,008mt - 382-383link	Max : 5019,2mm
Working Load Limit (WLL)	Max 25 kN	24,994mt - 954-956link	Min : 10008,4mm
Ultimate Elongation (A)	% 10 min	49,989mt - 1908-1913link	Max : 10038,4mm
Bend Deflection (f)	7 mm Min	100,005mt - 3817-3828link	Min : 24994,8mm
			Max : 25069,8mm
			Min : 49989,6mm
			Max : 50139,6mm
			Min : 100005,4mm
			Max : 100305,4mm

NOTE : Unless otherwise stated, the tolerances in the table apply. However, for double chain strips, the maximum difference between them should not exceed 0.1%.