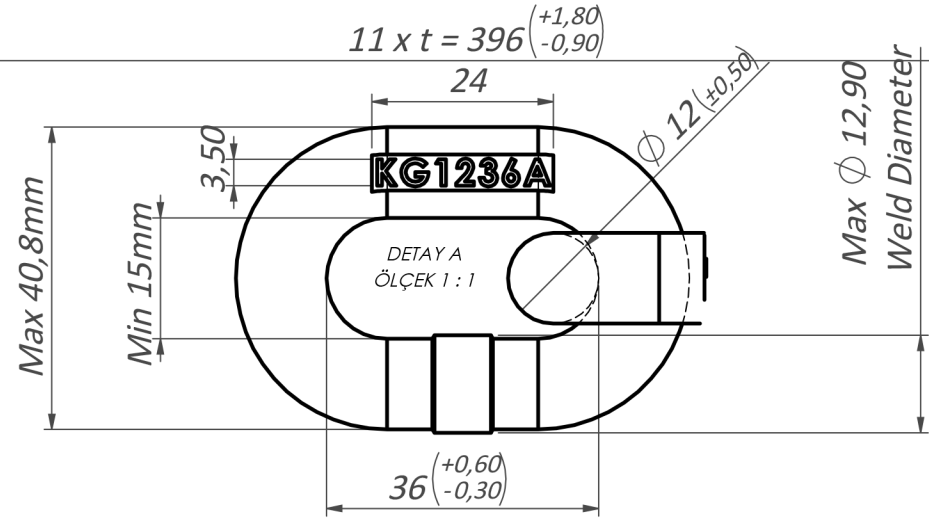
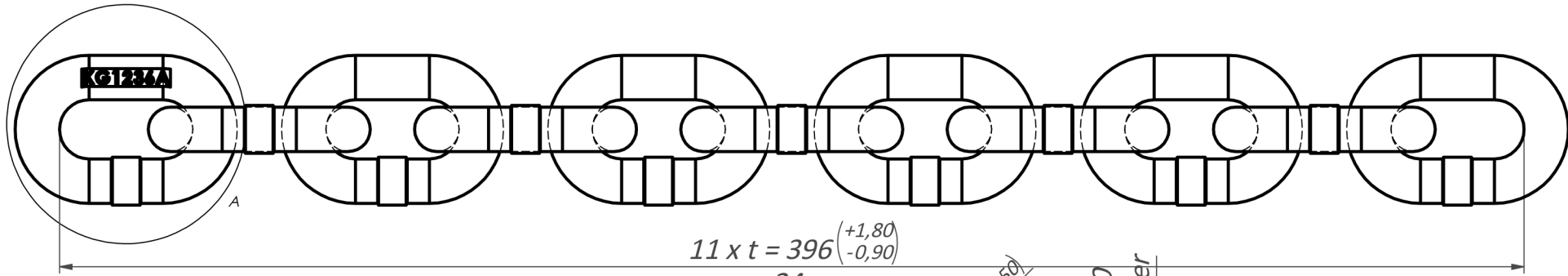


DIN-32895-Ø12x36x16mm Chain(KG1236A)



Properties & Notes		Tolerances for Total Meters in Production	
Material	Alloy Steel		
Standards for manufacturing and testing	DIN -32895	1,044mt - 29link	Min : 1044mm Max : 1047mm
Breaking Force (BF)	Min 160 kN	5,004mt - 139link	Min : 5004mm Max : 5019mm
Manufacturing Proof Force (MPF)	100 kN	10,008mt - 278link	Min : 10008mm Max : 10038mm
Working Load Limit (WLL)	Max 40 kN	24,984mt - 694-696link	Min : 24984mm Max : 25059mm
Ultimate Elongation (A)	% 10 min	50,004mt - 1389-1393link	Min : 50004mm Max : 50154mm
Bend Deflection (f)	10mm Min	100,008mt - 2778-2786link	Min : 100008mm Max : 100308mm

NOTE : Unless otherwise stated, the tolerances in the table apply. However, for double chain strips, the maximum difference between them should not exceed 0.1%.