

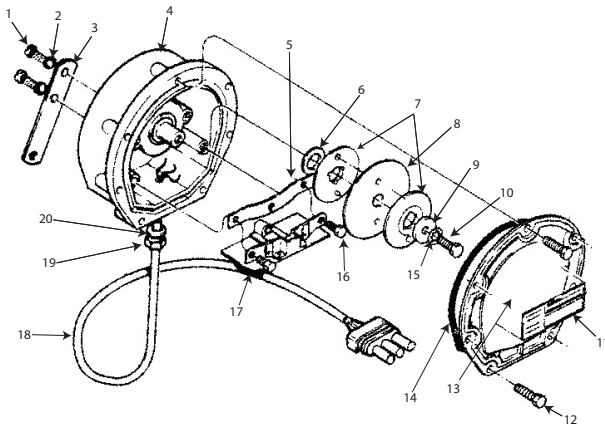
Application Rate Sensors

Auger/Conveyor sensors provide high resolution accuracy for measuring the rotational speed of a shaft to ensure system accuracy.

- Outputs at 360 pulses per revolution for increased accuracy
- RPM range 2-2,500
- Easily adapts to 1 and 1 1/4" diameter shafts
- 12V sensor with 5-8 V square-wave signal output



Application Rate Sensor



NOTE: All Rev. D sensors use an updated housing and bearing assembly and a different shaft seal. Shaft seal (not shown) is 21002-0011.

Cable Assembly		
	46436-0198	1 ft. Cable
	46436-0196	5 ft. Cable
	46436-0199	6 ft. Cable
	46436-0190	10 ft. Cable
	46436-0191	15 ft. Cable
	46436-0197	22 ft. Cable
	46436-0192	30 ft. Cable
Pin	Color	Function
A	Red	+12V
B	Black	Ground
C	Green	Signal

Part Number	Description
464360170S1	Application Rate Sensor 10' Cable WP
464360171S1	Application Rate Sensor 15' Cable WP
464360172S1	Application Rate Sensor 30' Cable WP
464360176S1	Application Rate Sensor 5' Cable WP
464360177S1	Application Rate Sensor 22' Cable WP
464360178S1	Application Rate Sensor 1' Cable WP
464211210S1	White Sensor Motor Adaptor

Item	Part Number	Description
1	20126-0013	PNH Tap Screw
2	20065-0012	#8 Lockwasher
3	42458	Mounting Bracket
4	46436-0161	Housing & Bearing Assembly (all but Rev. D)
4B	46436-0161B	Housing & Bearing Assembly (Rev. D only)
5	45714-1750	Grating Assembly
6	20000-0099	Stainless Steel Shim
7	45714-1050	Disk Retaining Washer
8	45714-0931	Slotted Disk, 360
9	20000-0098	Washer (1/8" thick)
10	20134-0040	#10-32 x 1/2" Hex Head Screw
11	20242-0088	Decal
12	21389-0030	#8 x 1/2" Stainless Steel Screw
13	45714-0920	Cover Plate
14	21028-0064	Sensor Plate O-ring
15	20032-0007	Internal Lockwasher
16	21389-0028	#6 x 1/2" Screw
17	46436-0200A	Circuit Board Assembly
18	Various	Cable Assembly
19	45382-2150	Nut Seal
20	21028-0040	O-ring
21	45714-0940A	Shaft (not shown)