

Assembly instructions

Assembly tip:

Before beginning assembly, fit a 4 mm pneumatic hose (HSC.074) to the filling tube (HRS.227). To do this, push the pneumatic hose 5 - 10 mm over the filling tube.



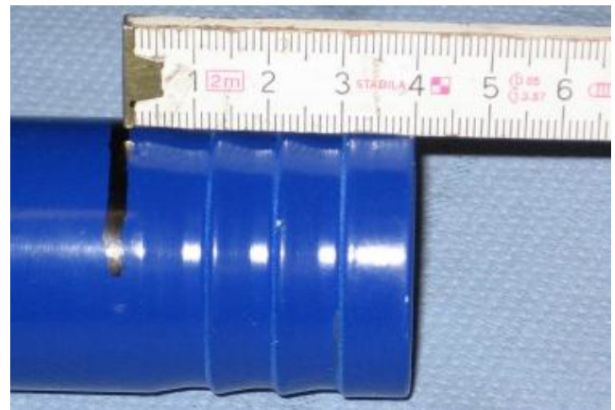
Open the CFC hose switch off (KFC.001.TR/TL) and insert the filling tube. Make sure that the filling tube is in the recess intended for it in the hose switch off.



Push the hose switch off (TSC.004) into the hose until the lower stop touches the hose. Make sure that the filling tube is still in the recess intended for it in the hose switch off.



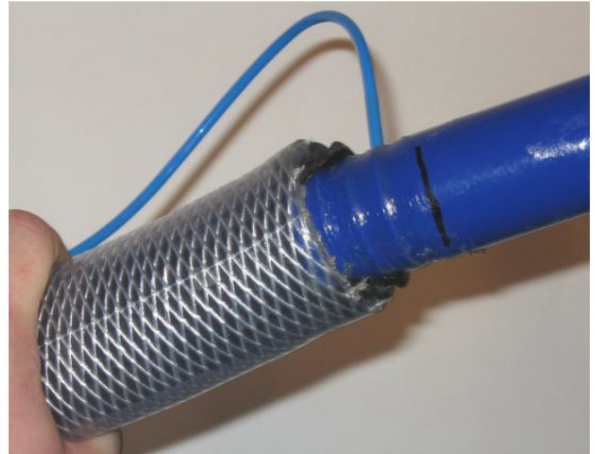
Mark a distance of 40 mm on the distributor's tube of the distributor to which the hose switch off will be installed.



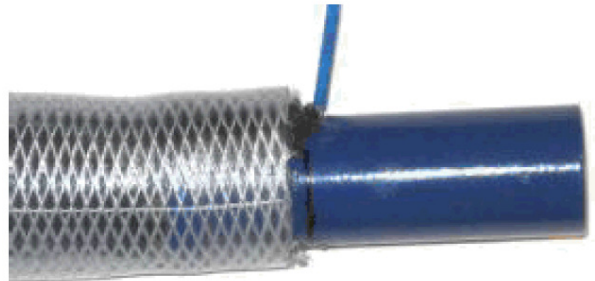
Generously lubricate the marked section of the distributor tube.



Install the hose switch off on the distributor tube
Attention! Do not allow the hose switch off to slip
into the hose.



Push the hose switch off up to the mark.



Place the hose clamp (NSS.072) approx. 10 mm
from the end of the hose and tighten it securely.
Then connect 4 mm of pneumatic hose to the filling
tube.

