

Kramp

Hydraulic Pumps and Motors



It's that easy.

 **KRAMP**

THE PERFECT SOLUTION FOR THE MEDIUM PRESSURE APPLICATIONS

Our webshop offers an attractive range of hydraulic pumps, motors and the corresponding control systems for hydrostatic drives. Our range of KCLP pumps and KPMF/KPMV motors meets all the requirements of the medium pressure segment, offering solutions for medium duty applications such as transmissions for cherry pickers, small forklifts, small wheeled loaders and picking carts.

Hydraulic pumps

The Kramp Closed Loop Pump (KCLP) is a closed loop piston pump with adjustable displacement. The pump is available in three different sizes.



KCLP1 14–18 cc/rev
With aluminium pump house

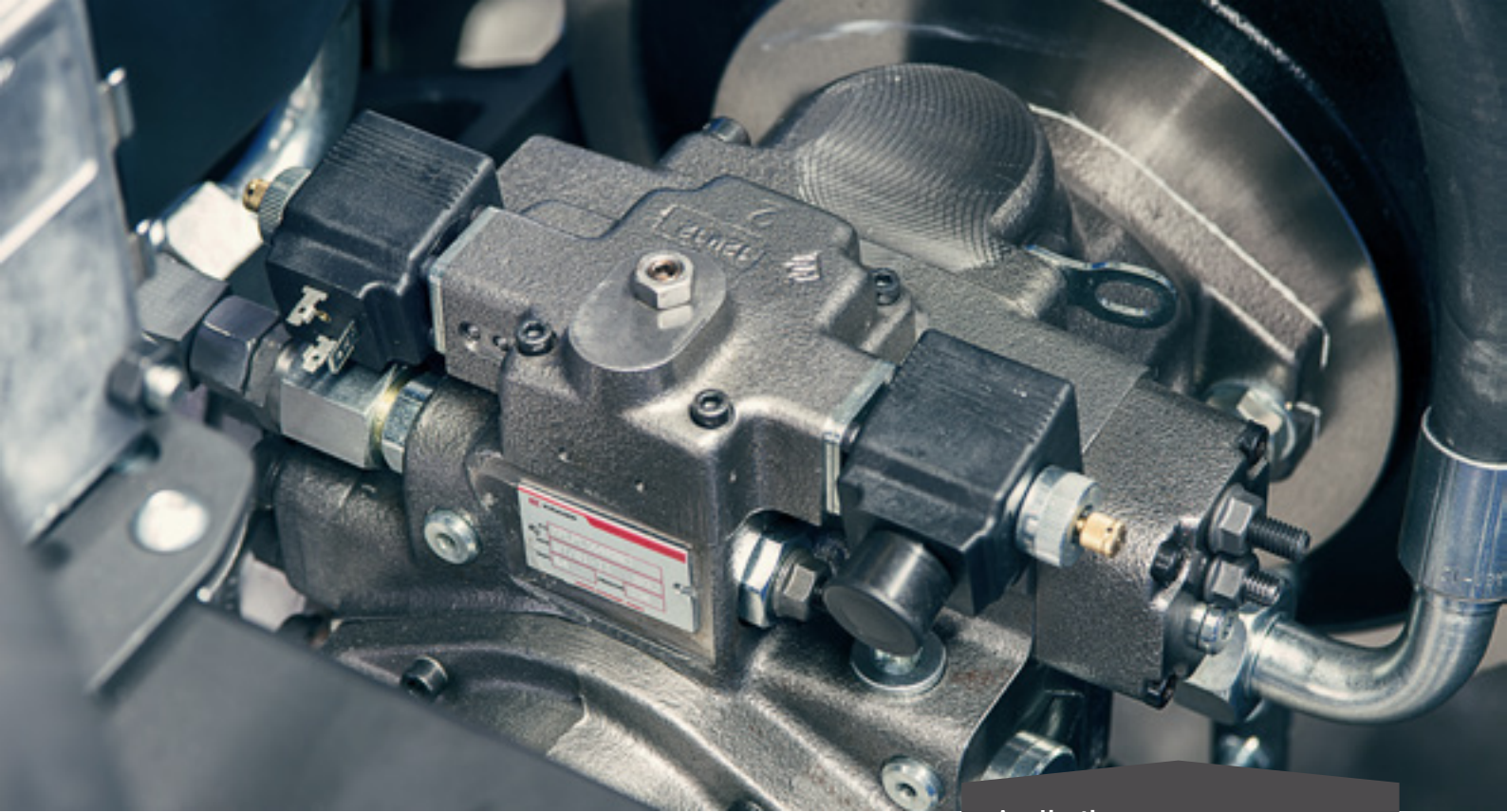


KCLP2 21–28 cc/rev
With cast iron pump house



KCLP3 46–64 cc/rev
With cast iron pump house





Applications

- Mobile and stationary applications
- Transmissions (wheel or track)
- Winch drives

Modular, efficient and compact

Thanks to the variety of sizes and displacements available, this pump series covers a wide range of flow pressures. The pumps feature an efficient and compact design, making them easy to install in existing systems. The modular design means that the pumps are easy to adjust if, for example, an axis needs to be replaced or a filter needs to be fitted.

The smaller pumps can also be fitted with a range of different control systems (on/off and electrical proportional), and all pumps are available with feedback for a constant driving speed. **Pumps held in stock feature feedback as standard.**

Type	Q (cc/rev)	Q (cc/rpm) Filling pump	Connection	N max. (rpm)	Pressure max. Continuous (bar)	Pressure max. Peak (bar)	P filling pump (bar)	Housing material	Part No.
KPLPC1	14	5.4	3/8 G	3600	230	270	20	Aluminium	KCLPC114...
KPLPC1	18	5.4	3/8 G	3600	230	270	20	Aluminium	KCLPC118...
KPLPC2	21	11	3/4 G	3600	250	350	20	Cast iron	KCLPC221...
KPLPC2	28	11	3/4 G	3600	250	350	20	Cast iron	KCLPC228...
KPLPC3	46	13	SAE 3/4 6000 psi flange	3600	300	400	22	Cast iron	KCLPC346...
KPLPC3	50	13	SAE 3/4 6000 psi flange	3600	300	400	22	Cast iron	KCLPC350...
KPLPC3	64	13	SAE 3/4 6000 psi flange	3600	300	400	22	Cast iron	KCLPC364...

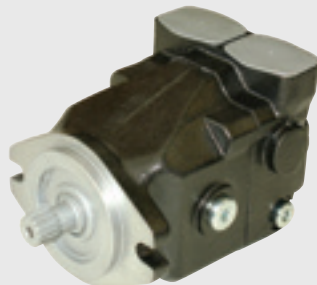
Hydraulic motors

We supply two types of hydraulic axial piston motor. The Kramp Piston Motor Fixed (KPMF) is perfect for constant driving speeds. For variable speeds, the Kramp Piston Motor Variable (KPMV) is the ideal solution. This is a two speed motor with a minimum and maximum speed.

The motors are available with a range of displacements. They are also exceptionally compact and equipped with universal connections for quick and easy assembly.



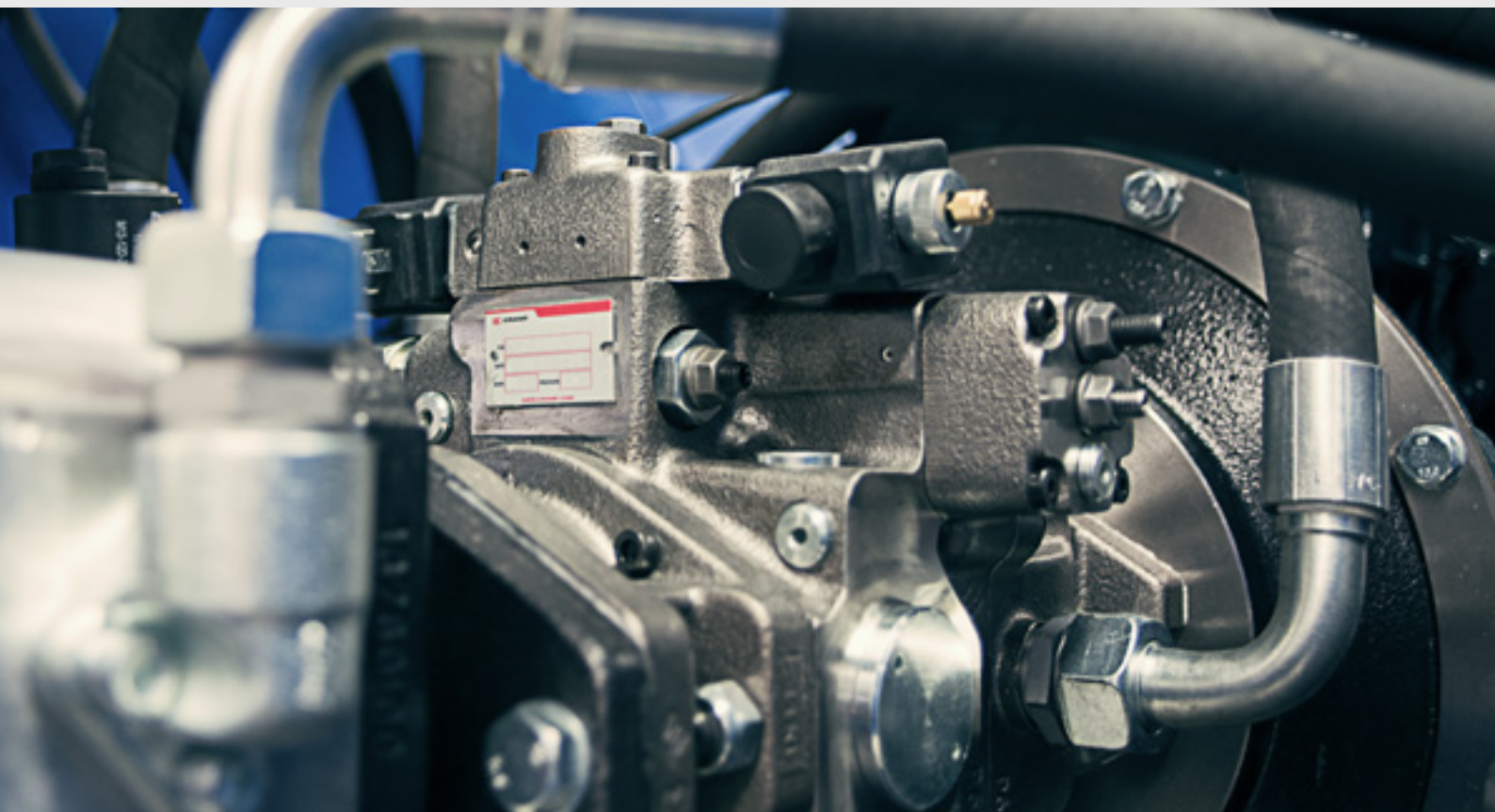
KPMF 21-28 cc/rev



KPMF 46-64 cc/rev



KPMV 46-64 cc/rev





Immediate availability

- All types of pumps and motors in stock
- All spare parts in stock
- Clockwise pumps and motors available immediately. Modular design means that we can supply anti-clockwise pumps and motors within one day
- We can swiftly build pumps with different regulators
- Multiple pumps available; also available in combination with gear pumps
- All accessories in stock. The range includes joysticks, electronics, coils, valves etc

If required, our engineers can fit the pumps and motors with a complete electrical control system. The modular design means that we can fully customise the product to suit your requirements.

Type	Q [cc/rev]	Connection	N max. (rpm)	Pressure max. Continuous (bar)	Pressure max. Peak (bar)	Part No.
KPMF	21	3/4 G / flange 3/4 SAE A 600	3600	250	350	KPMF21...
KPMF	28	3/4 G / flange 3/4 SAE A 600	3600	250	350	KPMF28...
KPMF	46	3/4 G / flange 3/4 SAE A 600	3600	300	400	KPMF46...
KPMF	50	3/4 G / flange 3/4 SAE A 600	3600	300	400	KPMF50...
KPMF	64	3/4 G / flange 3/4 SAE A 600	3600	300	400	KPMF64...
KPMV	46	3/4 G	4000	300	400	KPMV46...
KPMV	50	3/4 G	4000	300	400	KPMV50...
KPMV	64	3/4 G	4000	300	400	KPMV64...

