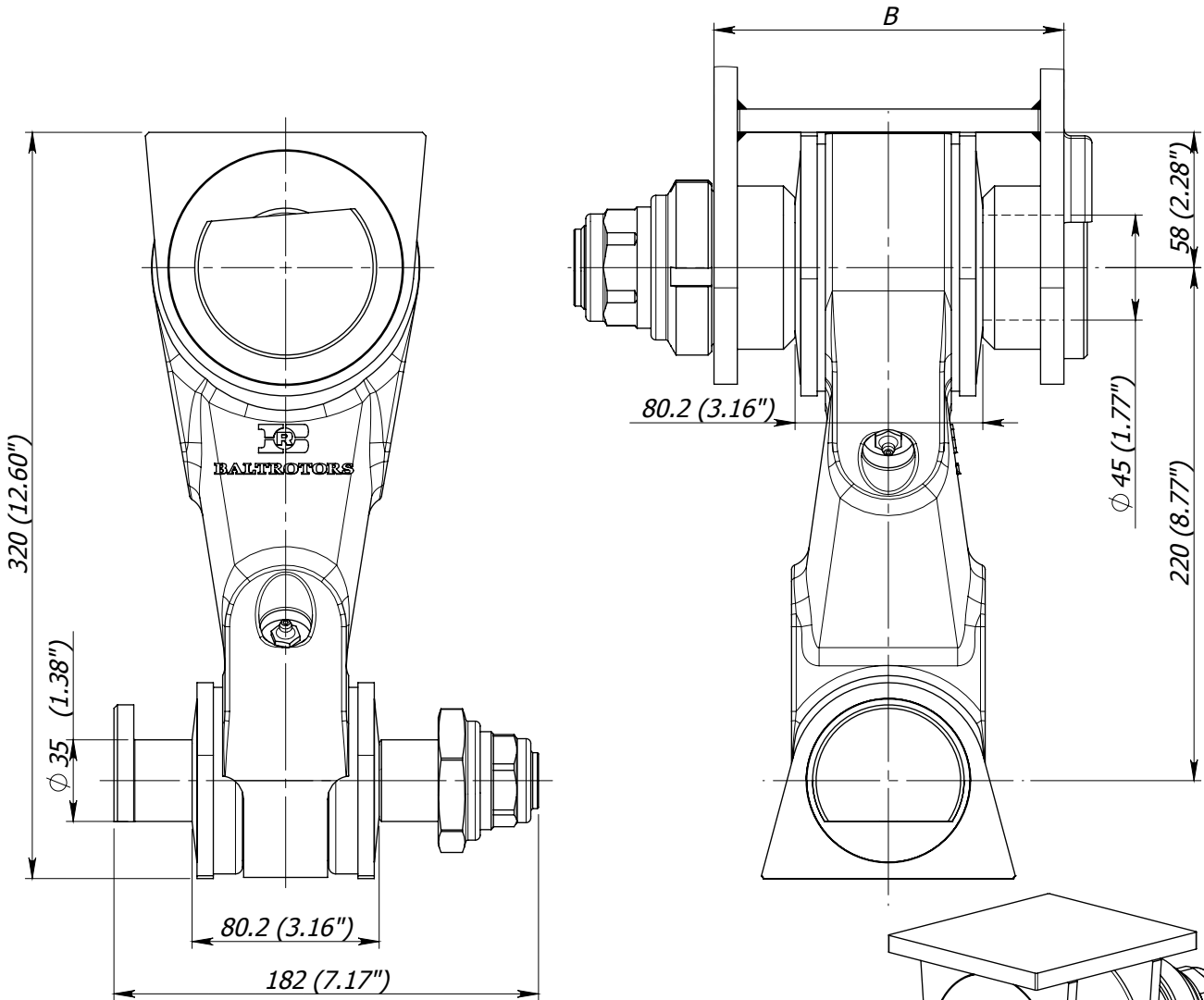


Dual swing damper BR 22 KS



Link	Crane nose outer width B (mm)	Weight (kg)
BR 22 KS/170	170 (6.69")	17.78 (39.20 lb)
BR 22 KS/160	160 (6.29")	17.65 (38.91 lb)
BR 22 KS/150	150 (5.90")	17.53 (38.64 lb)
BR 22 KS/140	140 (5.51")	17.40 (38.36 lb)
BR 22 KS/130	130 (5.12")	17.28 (38.09 lb)
BR 22 KS/120	120 (4.72")	17.15 (37.80 lb)
BR 22 KS/110	110 (4.33")	17.03 (37.54 lb)

It is possible to change size B by client's request

Instruction manual

To adjust the brake of the link, following actions have to be done:

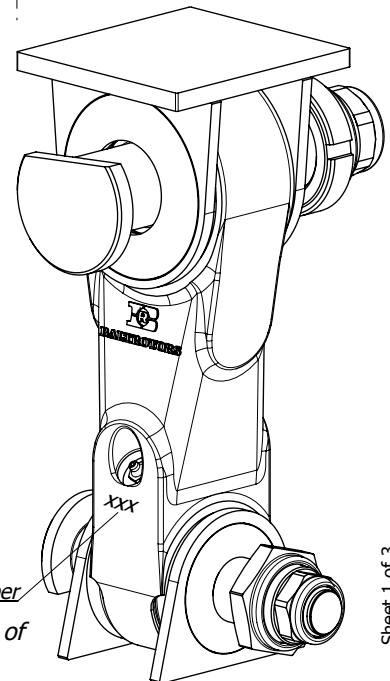
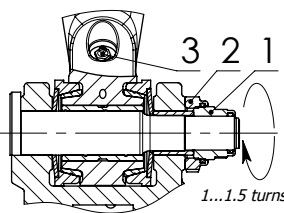
- release the lock nut (pos.2)
- twist the adjusting nut (pos.1) until the disc spring starts to clamp
- tighten the adjusting nut (pos.1) at 1...1.5 turns, that will provide braking moment of 200...250 Nm (148...185 lb ft)
- tighten the lock nut (pos.2) with tightening torque 100 Nm (74 lb ft).

Greasing of lower slide bearing and brake cones is already done through lubricating nipple (pos.3). Fill grease

Starplex EP 2 until it will appear to the external surfaces.

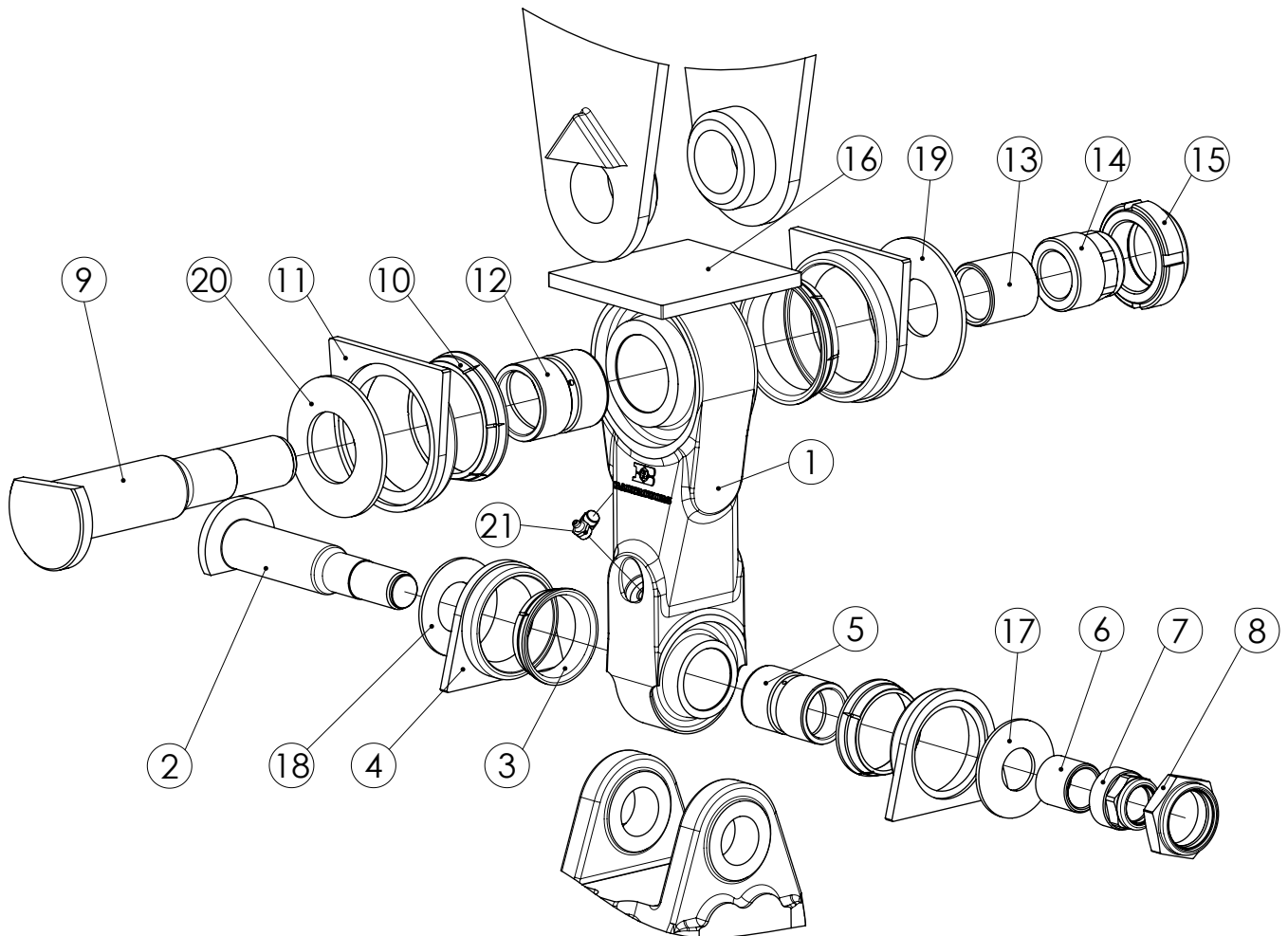
Greasing must be repeated after every 8 working hours of the link.

NOTICE! The link is delivered ungreased. It should be well greased before taking into exploitation.



Dual swing damper BR 22 KS

List of parts



Dual swing damper BR 22 KS

List of parts

Pos.	Part No.	Description	BR 22 KS/170	BR 22 KS/160	BR 22 KS/150	BR 22 KS/140	BR 22 KS/130	BR 22 KS/120	BR 22 KS/110
1	BR 22 KS.001 LA	Link	1	1	1	1	1	1	1
2	BR 20 K.002-01	Pin	1	1	1	1	1	1	1
3	BR 20 K.003-01	Brake cone	2	2	2	2	2	2	2
4	BR 20 K.004-01	Pusher cone	2	2	2	2	2	2	2
5	BR 20 K.005	Bushing	1	1	1	1	1	1	1
6	BR 20K.006	Pusher	1	1	1	1	1	1	1
7	BR 20K.007-01	Adjustment nut	1	1	1	1	1	1	1
8	BR 20 K.008-01	Locknut	1	1	1	1	1	1	1
9	BR 22 KS.002-04	Pin	1	-	-	-	-	-	-
	BR 22 KS.002-03		-	1	-	-	-	-	-
	BR 22 KS.002-02		-	-	1	-	-	-	-
	BR 22 KS.002-01		-	-	-	1	-	-	-
	BR 22 KS.002-06		-	-	-	-	1	-	-
	BR 22 KS.002-05		-	-	-	-	-	1	-
	BR 22 KS.002-07		-	-	-	-	-	1	
10	BR 22 KS.003	Brake cone	2	2	2	2	2	2	2
11	BR 22 KS.004	Pusher cone	2	2	2	2	2	2	2
12	BR 22 KS.009	Bushing	1	1	1	1	1	1	1
13	BR 22 KS.006-04	Pusher	1	-	-	-	-	-	-
	BR 22 KS.006-03		-	1	-	-	-	-	-
	BR 22 KS.006-02		-	-	1	-	-	-	-
	BR 22 KS.006-01		-	-	-	1	-	-	-
	BR 22 KS.006-08		-	-	-	-	1	-	-
	BR 22 KS.006-06		-	-	-	-	-	1	-
	BR 22 KS.006-10		-	-	-	-	-	1	
14	BR 30 K.007	Adjustment nut	1	1	1	1	1	1	1
15	BR 30 K.008	Locknut	1	1	1	1	1	1	1
16	BR 32 KS.011	Supporting plate	1	1	1	1	1	1	1
17	Cat. No. 4382	Disc spring	1	1	1	1	1	1	1
18	Cat. No. 4383	Disc spring	1	1	1	1	1	1	1
19	Cat. no. 4403	Disc spring	1	1	1	1	1	1	1
20	Cat. no. 4407	Disc spring	1	1	1	1	1	1	1
21	1.2.C6	Grease nipple	2	2	2	2	2	2	2