

QJ - Quick Joints®

QJ - Quick Joints®

QJ - Quick Joints®

con filettatura esterna: gas cilindrico UNI ISO 228/1

with outer thread: parallel GAS UNI ISO 228/1

avec filet extérieur: GAS cylindrique UNI ISO 228/1

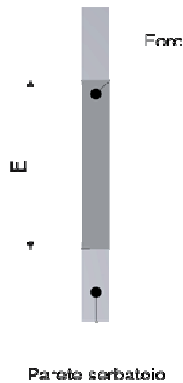
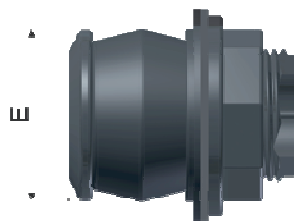
Spessore parete Thickness wall épaisseur paroi S [mm]	Filetto utile L1 [mm] Useful thread L1 [mm] - Filetage utile L1 [mm]						Sporgenza L [mm] Overhang L [mm] - Saillie L [mm]					
	1/2"	3/4"	1"	1"1/4	1"1/2	2"	1/2"	3/4"	1"	1"1/4	1"1/2	2"
1	X	X	X	X	X	X	X	X	X	X	X	X
2	19	22	27	X	X	X	23	26	31	X	X	X
3	18	21	26	X	X	X	22	25	30	X	X	X
4	17	20	25	29	39	54	21	24	29	34	44	59
5	16	19	24	28	38	53	20	23	28	33	43	58
6	15	18	23	27	37	52	19	22	27	32	42	57
7	14	17	22	26	36	51	18	21	26	31	41	56
8	13	16	21	25	35	50	17	20	25	30	40	55
9	X	15	20	24	34	49	X	19	24	29	39	54
10	X	X	19	23	33	48	X	X	23	28	38	53
11	X	X	X	22	32	47	X	X	X	27	37	52
12	X	X	X	21	31	46	X	X	X	26	36	51
13	X	X	X	X	X	X	X	X	X	X	X	X

X = non installabile

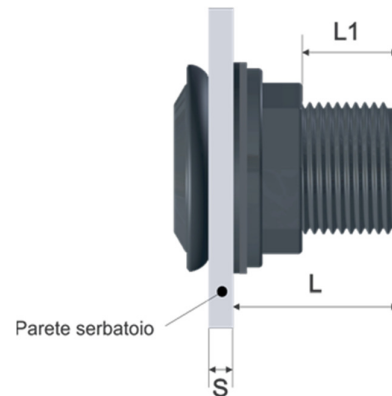
X = not installable

X = ne peut pas être installé

Raccordo Esteso



Raccordo Installato



	Diametro foro di innesto E - Hole diameter of hitch E - Diamètre trou de greffe E					
Misura Misura - Misura	1/2"	3/4"	1"	1"1/4	1"1/2	2"
Diametro (mm) diameter (mm) - diamètre (mm)	29	35	43	52	59	70

Torques

Filettature - Threads - Filetts	1/4"	3/8"	1/2"	3/4"	1"	1"1/4	1"1/2	2"
Serraggio Max materiale PP - Max Tightening PP material - Serrage Max Matériel PP	2 Nm	3 Nm	6 Nm	8 Nm	10 Nm	15 Nm	20 Nm	25 Nm
Serraggio Max materiale PA - Max Tightening PA material - Serrage Max Matériel PA	3 Nm	5 Nm	8 Nm	10 Nm	12 Nm	17 Nm	30 Nm	35 Nm