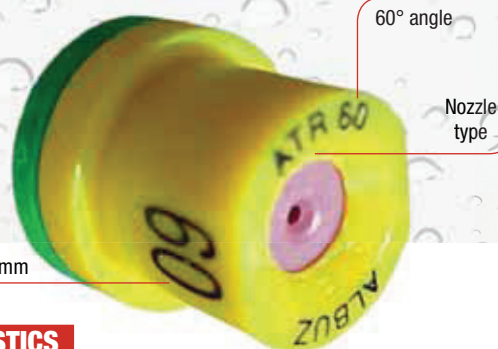


ALBUZ® ATR 60°

Hollow cone nozzle



APPLICATIONS

- ▶ For fungicides and insecticides.
- ▶ Recommended for orchard and vineyards.

MAIN CHARACTERISTICS

- ▶ Angle of 60° at 5 bar.
- ▶ Hollow cone nozzle producing fine droplets.
- ▶ The **green cap** is used for précising that the nozzles has an angle of 60 degrees.
- ▶ ALBUZ® durable pink ceramic allows high pressure spraying while maintaining nozzle performance and precision.

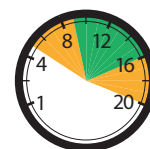
SPECIFIC CHARACTERISTICS

- ▶ Easy dismantling for cleaning.
- ▶ The angle of 60 degrees :
 - Is mostly recommended during the use of the Shielded Sprayer or Tunnel sprayer.
 - The drift is reduced on the top part of the target during the process
- ▶ Can be used on a sprayer boom from 3 bar pressure.
- ▶ Precision polished ceramic surfaces of internal components ensure perfect sealing of the swirl chamber to give precise flowrate.
- ▶ **Recommended pressure: 10 bar.**

FLOW RATE CHART

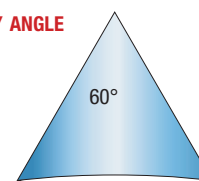
bar										
	LILAC	BROWN	YELLOW	ORANGE	RED	GREY	GREEN	BLACK	BLUE	
5	0,36	0,48	0,73	0,99	1,38	1,50	1,78	2,00	2,45	
6	0,39	0,52	0,80	1,08	1,51	1,63	1,94	2,18	2,67	
7	0,42	0,56	0,86	1,17	1,62	1,76	2,09	2,35	2,87	
8	0,45	0,60	0,92	1,24	1,73	1,87	2,22	2,50	3,06	
9	0,48	0,64	0,97	1,32	1,83	1,98	2,35	2,64	3,24	
10	0,50	0,67	1,03	1,39	1,92	2,08	2,47	2,78	3,40	
11	0,52	0,70	1,07	1,45	2,01	2,17	2,58	2,90	3,56	
12	0,55	0,73	1,12	1,51	2,09	2,26	2,69	3,03	3,71	
13	0,57	0,76	1,17	1,57	2,17	2,35	2,79	3,14	3,85	
14	0,59	0,79	1,21	1,63	2,25	2,43	2,89	3,26	3,99	
15	0,61	0,81	1,25	1,69	2,33	2,51	2,99	3,36	4,12	
16	0,63	0,84	1,29	1,74	2,40	2,59	3,08	3,47	4,25	
17	0,64	0,86	1,33	1,79	2,47	2,67	3,17	3,57	4,37	
18	0,66	0,89	1,37	1,84	2,54	2,74	3,25	3,67	4,49	
19	0,68	0,91	1,40	1,89	2,60	2,81	3,34	3,76	4,61	
20	0,70	0,93	1,44	1,94	2,67	2,88	3,42	3,85	4,72	
21	0,71	0,95	1,48	1,99	2,73	2,95	3,50	3,94	4,84	
22	0,73	0,98	1,51	2,03	2,79	3,01	3,57	4,03	4,94	
23	0,74	1,00	1,54	2,07	2,85	3,07	3,65	4,12	5,05	
24	0,76	1,02	1,58	2,12	2,91	3,14	3,72	4,20	5,15	
25	0,77	1,04	1,61	2,16	2,97	3,20	3,80	4,28	5,25	

PRESSURE RANGE



from 10
to 15 bar

SPRAY ANGLE



DROPLET SPECTRUM

