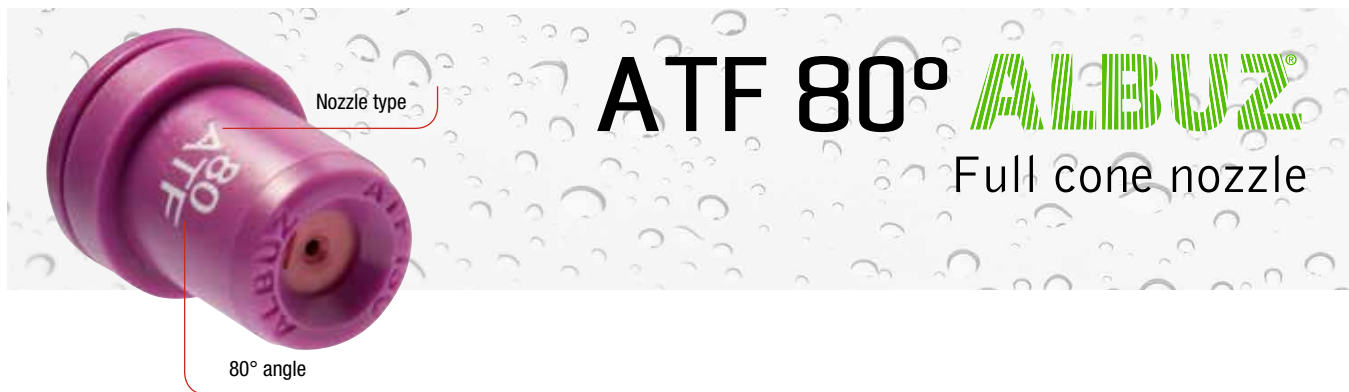


ORCHARD / VINEYARD

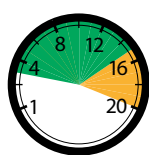


COORSTEK
Amazing Solutions



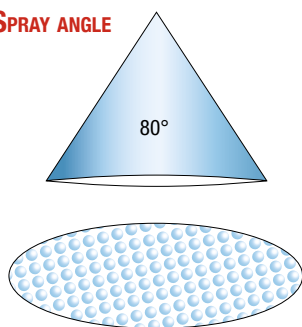
ATF 80° ALBUZ® Full cone nozzle

PRESSURE RANGE



de 3
à 15 bar

SPRAY ANGLE



APPLICATIONS

- ▶ For fungicides and insecticides.
- ▶ Recommended for working on dense vegetation.

MAIN CHARACTERISTICS

- ▶ Angle of 80° at 3 bar.
- ▶ Full cone nozzle producing fine droplets.
- ▶ ALBUZ® durable pink ceramic allows high pressure spraying while maintaining nozzle performance and precision.

SPECIFIC CHARACTERISTICS

- ▶ Flow rate characteristics, colour code meets international ISO standards.
- ▶ Easy dismantling for cleaning.
- ▶ Use 100 mesh nozzle filters for models 80 015 and 80 02.
- ▶ Can be used on a sprayer boom (nozzle spacing between 35 cm and 50 cm).
- ▶ Recommended on a sprayer boom from 3 bar pressure.
- ▶ Recommended pressure for vineyard and orchard: 10 bar.

FLOW RATE CHART

color	ISO Code	Mesh	(bar)	l/mn	Liters per hectare - Nozzle spacing : 50 cm											
					4 km/h	5 km/h	6 km/h	8 km/h	9 km/h	10 km/h	12 km/h	14 km/h	16 km/h	18 km/h	20 km/h	
GREEN	ATF 80 015	100	3	0,60	180	144	120	90	80	72	60	51	45	40	36	
				4	0,69	207	166	138	104	92	83	69	59	52	46	41
				5	0,77	231	185	154	116	103	92	77	66	58	51	46
YELLOW	ATF 80 02	100	4	0,80	240	192	160	120	107	96	80	69	60	53	48	
				5	0,91	276	221	184	137	121	109	91	78	68	61	55
				5	1,03	309	247	206	155	137	124	103	88	77	69	62
LILAC	ATF 80 025	50	3	1,00	300	240	200	150	133	120	100	86	75	67	60	
				4	1,15	345	276	230	173	153	138	115	99	86	77	69
				5	1,29	387	310	258	194	172	155	129	111	97	86	77
BLUE	ATF 80 03	50	3	1,20	360	288	240	180	160	144	120	103	90	80	72	
				4	1,39	417	334	278	209	185	167	139	119	104	93	83
				5	1,55	465	372	310	233	207	186	155	133	116	103	93
RED	ATF 80 04	50	3	1,60	480	384	320	240	213	192	160	137	120	107	96	
				4	1,85	555	444	370	278	247	222	185	159	139	123	111
				5	2,07	621	497	414	311	276	248	207	177	155	138	124

bar	l/mn				
	GREEN 80-015	YELLOW 80-02	LILAC 80-025	BLUE 80-03	RED 80-04
3	0,60	0,80	1,00	1,20	1,60
4	0,69	0,91	1,15	1,39	1,85
5	0,77	1,03	1,29	1,55	2,07
6	0,85	1,13	1,41	1,70	2,26
7	0,92	1,22	1,53	1,83	2,44
8	0,98	1,31	1,63	1,96	2,61
9	1,04	1,39	1,73	2,08	2,77
10	1,10	1,46	1,83	2,19	2,92
11	1,15	1,53	1,91	2,30	3,06
12	1,2	1,6	2,00	2,40	3,20
13	1,25	1,67	2,08	2,50	3,33
14	1,30	1,73	2,16	2,59	3,46
15	1,34	1,79	2,24	2,68	3,58
16	1,39	1,85	2,31	2,77	3,70
17	1,43	1,90	2,38	2,86	3,81
18	1,47	1,96	2,45	2,94	3,92
19	1,51	2,01	2,52	3,02	4,03
20	1,55	2,07	2,58	3,10	4,13
21	1,59	2,12	2,65	3,17	4,23
22	1,62	2,17	2,71	3,25	4,33
23	1,66	2,22	2,77	3,32	4,43
24	1,70	2,26	2,83	3,39	4,53
25	1,73	2,31	2,89	3,46	4,62