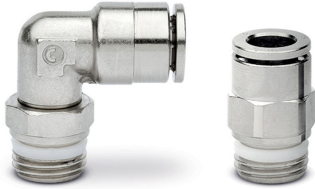


BRASS SUPER-RAPID FITTINGS FOR PLASTIC TUBES

SERIES 6000

Tube external diameters: 3, 4, 5, 6, 8, 10, 12, 14, 16 mm
 Fittings threads: metric (M3, M5, M6, M7), BSP (G1/8, G1/4, G3/8, G1/2, G3/4), BSPT (R1/8, R1/4, R3/8, R1/2)



Series 6000 super-rapid fittings have been designed with a special collet which provides an homogeneous tight on the whole surface of plastic tubes, thus ensuring high reliability and a long service life, also after connections and disconnections of the tube are repeated several times.

Many types of threads are also available: metric, BSP and BSPT.

The Sprint® models are characterized by great adaptability of male threads with BSP parallel (ISO-228) female threads even in the presence of non-flat or irregular surfaces.

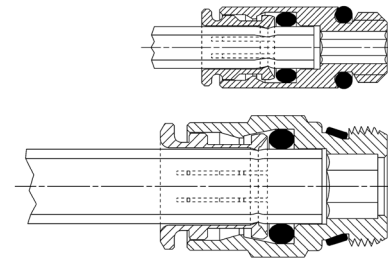
This is possible thanks to a Teflon ring on the male thread, which guarantees a perfect seal between the two threads.

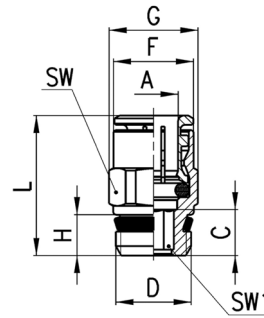
The wide range of these fittings includes the LF version ("Stop Fitting") which is equipped with a self-retaining device interrupting the air flow when the tube is disconnected and restores it when reconnected.

General Data

Diameter	Ø 4 - 5 - 6 - 8 - 10 - 12 - 14 - 16 mm Micro models: Ø 3 - 4 - 6 - 8 - 10 mm
Threads	GAS conical ISO 7 (BSPT) GAS cylindrical ISO 228 (BSP); M5-M6 and other metric threads available on request; NPT on request Micro models: M3 - M5 - M7 - G1/8 - G1/4
Temperature [°C]	- 20°C ÷ 80°C (see the technical data of tubing used) Micro models: -10°C ÷ 80°C (see the technical data of tubing used)
Tube to connect	Polyamide (PA) 6 - 11 - 12, Polyurethane (PU), Polyethylene (PE), hytrel Polyester
Fluid	Compressed air (for other types of fluid, contact our engineers)
Materials	Standard models: body and collet in nickel-plated brass, O-Ring in NBR, thread seals in PTFE - NBR - PA Models with self-retaining device: body and collet in nickel-plated brass, poppet valve in brass, spring in stainless steel, O-Ring in NBR, thread seals in PTFE
Working pressure	Standard models: min - 0,9 bar - max 16 bar (see tubing) Models with self-retaining device: 0 ÷ 16 bar

Fitting with connecting tube



BRASS SUPER-RAPID FITTINGS FOR PLASTIC TUBES
SERIES 6000 - DIMENSIONS
Male straight Mod. S6510


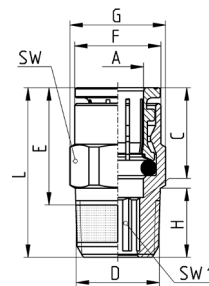
Mod.	A	D	C	F	G	H	L	SW	SW1	Weight [g]
S6510 4-1/8	4	G1/8	3,8	8,8	13,2	5,5	18	12	2,5	9
S6510 4-1/4	4	G1/4	5,5	8,8	15,2	7	19,5	14	2,5	15
S6510 5-1/8	5	G1/8	3,8	9,8	13,2	5,5	19	12	3	8
S6510 5-1/4	5	G1/4	5,5	9,8	15,2	7	20	14	3	14
S6510 6-1/8	6	G1/8	6	11,7	13,2	5,5	22	12	4	10
S6510 6-1/4	6	G1/4	5,5	11,7	15,2	7	21	14	4	14
S6510 6-3/8	6	G3/8	6,5	11,7	20,5	8	22,5	19	4	27
S6510 8-1/8	8	G1/8	7,5	13,7	15,2	5,5	25	14	5	13
S6510 8-1/4	8	G1/4	6,5	13,7	15,2	7	24	14	6	14
S6510 8-3/8	8	G3/8	6	13,7	20,5	8	23,5	19	6	25
S6510 8-1/2	8	G1/2	7,5	13,7	24,5	9	25	22	6	43
S6510 10-1/4	10	G1/4	8,3	15,4	18,5	7	28,5	17	7	23
S6510 10-3/8	10	G3/8	5,3	15,4	20,5	8	25,5	19	8	27
S6510 10-1/2	10	G1/2	4,8	16	24,5	9	25	22	8	39
S6510 12-1/4	12	G1/4	10,3	18,3	20,5	7	29,5	19	7	26
S6510 12-3/8	12	G3/8	9,3	18,3	20,5	8	28,5	19	9	30
S6510 12-1/2	12	G1/2	5,8	18,3	24,5	9	25	22	10	36
S6510 14-3/8	14	G3/8	10,3	20,5	24,5	8	30,5	22	9	42
S6510 14-1/2	14	G1/2	6,3	20,5	24,5	9	26,5	22	12	34
S6510 16-1/2	16	G1/2	9	23,5	26,5	9	32	24	-	42
S6510 16-3/4	16	G3/4	3,5	23,5	27,3	9	26,5	24	-	46

FITTINGS, CONNECTORS AND TUBES

10
Male straight Mod. C6510

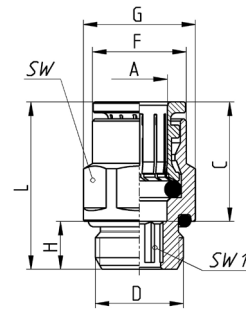
News

With pre-applied PTFE sealant



Mod.	A	D	C	E	F	G	H	L	SW	SW1	Weight [g]
C6510 4-1/8	4	R1/8	14	12,7	8,8	13,2	7,5	18,5	12	2,5	12
C6510 4-1/4	4	R1/4	14	13	8,8	15,2	11	22	14	2,5	16
C6510 6-1/8	6	R1/8	16	16,2	11,7	13,2	7,5	22	12	4	12
C6510 6-1/4	6	R1/4	16	15,5	11,7	15,2	11	24,5	14	4	15
C6510 8-1/8	8	R1/8	17,5	21,2	13,7	15,2	7,5	27	14	5	17
C6510 8-1/4	8	R1/4	17,5	18	13,7	15,2	11	27	14	6	19
C6510 8-3/8	8	R3/8	17,5	18	13,7	20,5	11,5	27,5	19	6	29
C6510 8-1/2	8	R1/2	17,5	17,5	13,7	24,5	14	28,5	22	6	53
C6510 10-1/8	10	R1/8	20,2	23,7	15,4	18,5	7,5	29,5	17	7	19
C6510 10-1/4	10	R1/4	20,2	24	15,4	18,5	11	33	17	7	28
C6510 10-3/8	10	R3/8	20,2	19	15,4	20,5	11,5	28,5	19	8	29
C6510 10-1/2	10	R1/2	20,2	17,5	15,4	24,5	14	28,5	22	8	41
C6510 12-1/4	12	R1/4	19,2	23	18,3	20,5	11	32	19	7	31
C6510 12-3/8	12	R3/8	19,2	21,5	18,3	20,5	11,5	31	19	9	26
C6510 12-1/2	12	R1/2	19,2	18,5	18,3	24,5	14	29,5	22	10	39
C6510 14-3/8	14	G3/8	20,2	24	20,5	24,5	11,5	33,5	22	9	40
C6510 14-1/2	14	G1/2	20,2	19,5	20,5	24,5	14	30,5	22	12	37
C6510 16-1/2	16	G1/2	23	28	23,5	26,5	14	39	24	12	51

Male straight Mod. 6512

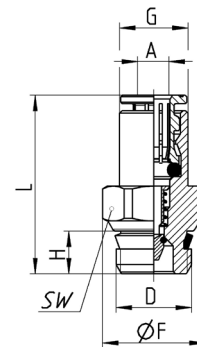
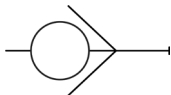


Mod.	A	D	C	F	G	H	L	SW	SW1	Weight [g]
6512 4-M5	4	M5	14,0	7,8	8,8	4	20	8	2	4
6512 4-M6	4	M6	14,0	8,8	9,9	4,5	20,5	9	2,5	6
6512 4-1/8	4	G1/8	14,0	8,8	13,5	6	19	12	2,5	10
6512 4-1/4	4	G1/4	14,0	8,8	16,4	7	20,5	15	2,5	14
6512 5-M5	5	M5	15,0	8,8	9,9	4	21	9	2	5
6512 6-M5	6	M5	16,0	11,7	13,2	4	22	12	2	8
6512 6-M6	6	M6	16,0	11,7	13,2	4,5	22,5	12	2,5	8
6512 6-1/8	6	G1/8	16,0	11,7	13,5	6	21	12	4	10
6512 6-1/4	6	G1/4	16,0	11,7	16,4	7	22	15	4	13
6512 8-1/8	8	G1/8	17,5	13,7	15,2	6	26	14	5	15
6512 8-1/4	8	G1/4	17,5	13,7	16,4	7	24,5	15	6	17
6512 8-3/8	8	G3/8	17,5	13,7	20,5	7	23	19	6	27
6512 10-1/4	10	G1/4	20,2	15,4	18,5	7	30	17	7	26
6512 10-3/8	10	G3/8	20,2	15,4	20,5	7	24,5	19	8	27
6512 10-1/2	10	G1/2	20,2	15,4	24,8	8	25	22	8	39
6512 12-1/4	12	G1/4	19,2	18,3	20,5	7	29,5	19	7	29
6512 12-3/8	12	G3/8	19,2	18,3	20,5	7	24	19	9	24
6512 12-1/2	12	G1/2	19,2	18,3	24,8	8	24,5	22	9	37
6512 14-3/8	14	G3/8	20,2	20,5	24,5	7	30,5	22	10	38
6512 14-1/2	14	G1/2	20,2	20,5	24,8	8	25,5	22	10	35
6512 16-1/2	16	G1/2	23,0	23,5	26,5	8	33,5	24	-	49

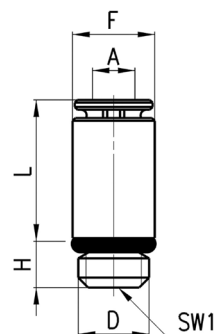
Male straight Mod. S6510...-LF



This version interrupts the air flow when the tube is disconnected and restores it when reconnected.



Mod.	A	D	F	G	H	L	SW	Weight [g]
S6510 4-1/8-LF	4	G1/8	13,2	8,8	5,5	23	12	11
S6510 6-1/8-LF	6	G1/8	13,2	11,7	6	30,5	12	15

BRASS SUPER-RAPID FITTINGS FOR PLASTIC TUBES
SERIES 6000 - DIMENSIONS
Male straight Mod. 6512 Micro


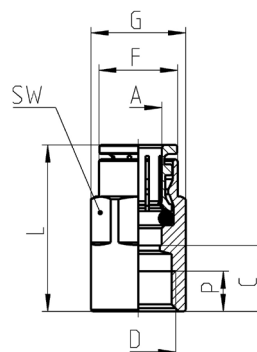
Mod.	A	D	F	H	L	SW1	Weight [g]	
6512 3-M3	3	M3	5,8	2,5	10,2	1,5	1	-
6512 3-M5	3	M5	5,8	3,5	10	2	1	•
6512 4-M7-M	4	M7	9,4	5	17,5	2,5	5	•
6512 4-1/8-M	4	G1/8	11,2	5	13	2,5	9	•, Y
6512 6-M7-M	6	M7	10,4	5	17	4	7	•
6512 6-1/8-M	6	G1/8	11,2	5	14	4	7	•, Y
6512 8-1/8-M	8	G1/8	12,4	5	18,5	5	10	•, Y
6512 10-1/4-M	10	G1/4	14,8	6	21	7	16	•

- = with gasket

• = with O-Ring

Y = compatible with Camozzi Y Series valve islands

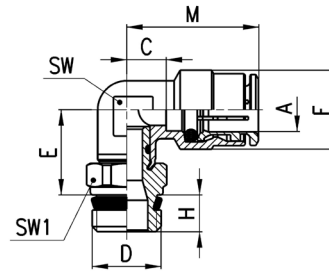
FITTINGS, CONNECTORS AND TUBES

Female straight Mod. 6463


Mod.	A	D	C	F	G	L	P [min]	SW	Weight [g]
6463 4-M5	4	M5	6,5	7,8	8,8	20,5	4,5	9	8
6463 4-1/8	4	G1/8	10	9	13	24	6	12	14
6463 5-1/8	5	G1/8	10	9,8	13	25	6	12	14
6463 6-1/8	6	G1/8	10	11,7	13	26	6	12	14
6463 6-1/4	6	G1/4	11,5	11,9	16,5	27,5	7	15	23
6463 8-1/8	8	G1/8	9,5	13,7	15,2	27	6	14	16
6463 8-1/4	8	G1/4	11,5	13,7	16,5	29	7	15	23
6463 10-1/4	10	G1/4	11,3	15,4	18,5	31,5	7	17	29

10

Swivel male elbow Mod. S6520

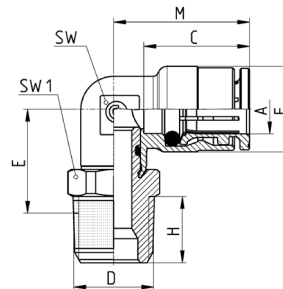


Mod.	A	D	C	E	F	H	M	SW	SW1	Weight [g]
S6520 4-1/8	4	G1/8	3,5	14,5	9	5,5	17,5	8	12	17
S6520 4-1/4	4	G1/4	3,5	14,5	9	7	17,5	8	14	23
S6520 5-1/8	5	G1/8	5,5	14,5	10	5,5	20,5	9	12	17
S6520 5-1/4	5	G1/4	5,5	14,5	10	7	20,5	9	14	23
S6520 6-1/8	6	G1/8	4	15	12,7	5,5	20	9	12	20
S6520 6-1/4	6	G1/4	4	15	12,7	7	20	9	14	23
S6520 6-3/8	6	G3/8	4	15,5	12,7	8	20	9	19	33
S6520 8-1/8	8	G1/8	5	16	14,2	5,5	22,5	11	12	22
S6520 8-1/4	8	G1/4	5	16	14,2	7	22,5	11	14	26
S6520 8-3/8	8	G3/8	5	16,5	14,2	8	22,5	11	19	41
S6520 8-1/2	8	G1/2	5	17	14,2	9	22,5	11	22	48
S6520 10-1/4	10	G1/4	5,8	18,5	16,5	7	26	13	14	32
S6520 10-3/8	10	G3/8	5,8	19	16,5	8	26	13	19	43
S6520 10-1/2	10	G1/2	5,8	19,5	16,5	9	26	13	22	62
S6520 12-1/4	12	G1/4	7,3	20	19,5	7	26,5	15	17	49
S6520 12-3/8	12	G3/8	7,3	20	19,5	8	26,5	15	19	48
S6520 12-1/2	12	G1/2	7,3	20,5	19,5	9	26,5	15	22	70
S6520 14-3/8	14	G3/8	8,3	21	21,5	8	28,5	17	19	74
S6520 14-1/2	14	G1/2	8,3	21,5	21,5	9	28,5	17	22	78

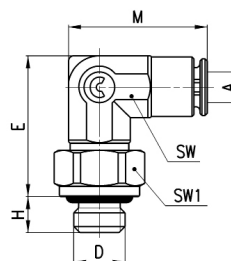
Swivel male elbow Mod. C6520

News
10

With pre-applied PTFE sealant



Mod.	A	D	C	E	F	H	M	SW	SW1	Weight [g]
C6520 4-1/8	4	R1/8	14	14,5	8,8	7,5	17,5	8	12	17
C6520 4-1/4	4	R1/4	14	15,5	8,8	11	17,5	8	15	27
C6520 6-1/8	6	R1/8	16	15,5	11,7	7,5	20	9	12	21
C6520 6-1/4	6	R1/4	16	15,5	11,7	11	20	9	14	29
C6520 6-3/8	6	R3/8	16	16,5	11,7	11,5	20	9	19	38
C6520 8-1/8	8	R1/8	17,5	15,5	13,7	7,5	22,5	11	12	24
C6520 8-1/4	8	R1/4	17,5	16,5	13,7	11	22,5	11	14	30
C6520 8-3/8	8	R3/8	17,5	18	13,7	11,5	22,5	11	19	47
C6520 8-1/2	8	R1/2	17,5	18,5	13,7	14	22,5	11	22	61
C6520 10-1/8	10	R1/8	20,2	18	15,4	7,5	26	13	14	30
C6520 10-1/4	10	R1/4	20,2	19	15,4	11	26	13	14	43
C6520 10-3/8	10	R3/8	20,2	19,5	15,4	11,5	26	13	19	47
C6520 10-1/2	10	R1/2	20,2	20,5	15,4	14	26	13	22	55
C6520 12-1/4	12	R1/4	19,2	20,5	18,3	11	26,5	15	17	53
C6520 12-3/8	12	R3/8	19,2	20,5	18,3	11,5	26,5	15	19	58
C6520 12-1/2	12	R1/2	19,2	21,5	18,3	14	26,5	15	22	60
C6520 14-3/8	14	R3/8	20,2	22	20,5	11,5	28,5	17	19	55
C6520 14-1/2	14	R1/2	20,2	22,5	20,5	14	28,5	17	22	63

BRASS SUPER-RAPID FITTINGS FOR PLASTIC TUBES
SERIES 6000 - DIMENSIONS
Swivel male elbow Mod. 6522 Micro


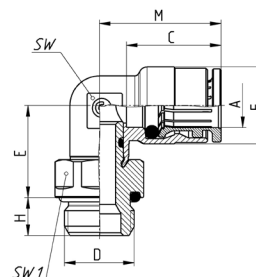
Mod.	A	D	E	H	M	SW	SW1	Weight [g]
6522 3-M3	3	M3	13,7	2,5	13,7	6	6	4
6522 3-M5	3	M5	13,7	3,5	13,7	6	8	5

- = with gasket
 ● = with O-Ring

FITTINGS, CONNECTORS AND TUBES

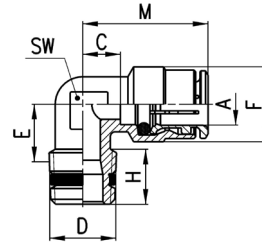
Swivel male elbow Mod. 6522

10



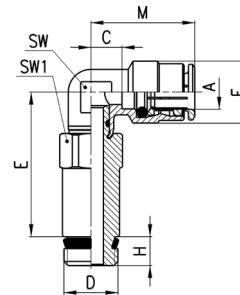
Mod.	A	D	C	E	F	H	M	SW	SW1	Weight [g]
6522 4-M5	4	M5	14,0	12,5	9	4	17,5	8	8	12
6522 4-1/8	4	G1/8	14,0	14,5	9	6	17,5	8	12	15
6522 4-1/4	4	G1/4	14,0	15,5	9	7	17,5	8	15	25
6522 5-M5	5	M5	15,0	12,5	10	4	20,5	9	8	13
6522 6-M5	6	M5	16,0	13	12,7	4	20	9	10	14
6522 6-1/8	6	G1/8	16,0	15	12,7	6	20	9	12	19
6522 6-1/4	6	G1/4	16,0	16	12,7	7	20	9	15	27
6522 8-1/8	8	G1/8	17,5	16	14,2	6	22,5	11	12	22
6522 8-1/4	8	G1/4	17,5	17	14,2	7	22,5	11	15	28
6522 8-3/8	8	G3/8	17,5	17	14,2	7	22,5	11	19	45
6522 10-1/4	10	G1/4	20,2	19,5	16,5	7	26	13	15	41
6522 10-3/8	10	G3/8	20,2	19,5	16,5	7	26	13	19	45
6522 10-1/2	10	G1/2	20,2	20,5	16,5	8	26	13	22	53
6522 12-1/4	12	G1/4	19,2	20	19,5	7	26,5	15	17	51
6522 12-3/8	12	G3/8	19,2	20,5	19,5	7	26,5	15	19	56
6522 12-1/2	12	G1/2	19,2	21,5	19,5	8	26,5	15	22	58
6522 14-3/8	14	G3/8	20,2	21,5	21,5	7	28,5	17	19	53
6522 14-1/2	14	G1/2	20,2	22,5	21,5	8	28,5	17	22	61

Fixed male elbow Mod. S6500

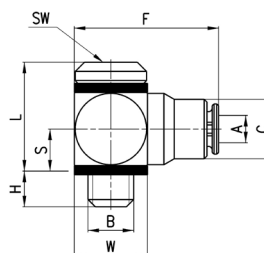


Mod.	A	D	C	E	F	H	M	SW	Weight [g]
S6500 4-1/8	4	R1/8	3,5	8,5	9	7,5	17,5	8	9
S6500 4-1/4	4	R1/4	5	11,5	9	12	19	9	13
S6500 5-1/8	5	R1/8	5,5	8,5	10	7,5	20,5	9	13
S6500 5-1/4	5	R1/4	5,5	11,5	10	12	20,5	9	17
S6500 6-1/8	6	R1/8	4	9	12,7	7,5	20	9	15
S6500 6-1/4	6	R1/4	4	11,5	12,7	12	20	9	16
S6500 8-1/8	8	R1/8	5	10,5	14,2	6,5	22,5	11	18
S6500 8-1/4	8	R1/4	5	11,5	14,2	12,5	22,5	11	21
S6500 8-3/8	8	R3/8	7	13	14,2	11,5	24,5	12	25
S6500 10-1/4	10	R1/4	5,8	13	16,5	11,5	26	13	33
S6500 10-3/8	10	R3/8	5,8	13	16,5	12	26	13	33
S6500 12-1/4	12	R1/4	7,3	14,5	19,5	11	26,5	15	46
S6500 12-3/8	12	R3/8	7,3	13,5	19,5	11,5	26,5	15	39

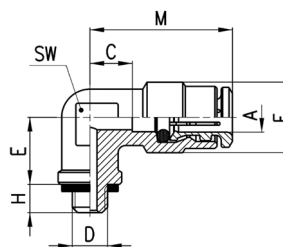
Extended swivel male elbow Mod. 6525



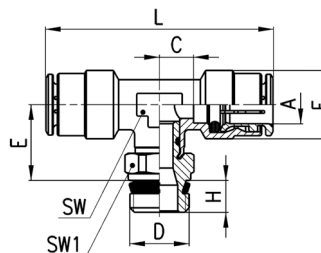
Mod.	A	D	C	E	F	H	M	SW	SW1	Weight [g]
6525 6-1/8	6	G1/8	4	33,8	12,7	5,5	20	9	12	34
6525 6-1/4	6	G1/4	4	34	12,7	7	20	9	14	47
6525 8-1/8	8	G1/8	5	34,8	14,2	5,5	22,5	11	12	35
6525 8-1/4	8	G1/4	5	35	14,2	7	22,5	11	14	50

BRASS SUPER-RAPID FITTINGS FOR PLASTIC TUBES
SERIES 6000 - DIMENSIONS
Assembled single banjo Mod. 6621 Micro


Mod.	A	B	C	F	H	L	S	W	SW	Weight [g]
6621 3-M3	3	M3	5,8	14,2	2,5	9,3	3,5	6	1,5	5
6621 3-M5	3	M5	6,5	16	3,2	11,9	4,8	8	2	6

Fixed male elbow Mod. 6501 4-M5


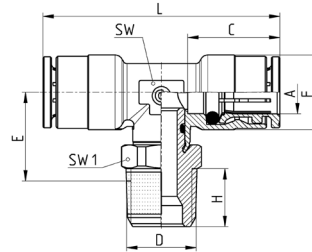
Mod.	A	D	C	E	F	H	M	SW	Weight [g]
6501 4-M5	4	M5	3,5	6	9	4	17,5	8	11

Swivel male branch tee Mod. S6430


Mod.	A	D	C	E	F	H	L	SW	SW1	Weight [g]
S6430 4-1/8	4	G1/8	3,5	14,5	9	5,5	35	8	12	18
S6430 5-1/8	5	G1/8	5,5	14,5	10	5,5	41	9	12	24
S6430 5-1/4	5	G1/4	5,5	14,5	10	7	41	9	14	30
S6430 6-1/8	6	G1/8	4	15	12,7	5,5	40	9	12	28
S6430 6-1/4	6	G1/4	4	15	12,7	7	40	9	14	33
S6430 8-1/8	8	G1/8	5	16	14,2	5,5	45	11	12	37
S6430 8-1/4	8	G1/4	5	16	14,2	7	45	11	14	42
S6430 8-3/8	8	G3/8	5	16,5	14,2	8	45	11	19	51
S6430 10-1/4	10	G1/4	5,8	18,5	16,5	7	52	13	14	56
S6430 10-3/8	10	G3/8	5,8	19	16,5	8	52	13	19	67
S6430 10-1/2	10	G1/2	5,8	19,5	16,5	9	52	13	22	85
S6430 12-1/4	12	G1/4	7,3	20	19,5	7	53	15	17	60
S6430 12-3/8	12	G3/8	7,3	20	19,5	8	53	15	19	65
S6430 12-1/2	12	G1/2	7,3	20,5	19,5	9	53	15	22	89
S6430 14-1/2	14	G1/2	8,3	21,5	21,5	9	57	17	22	88

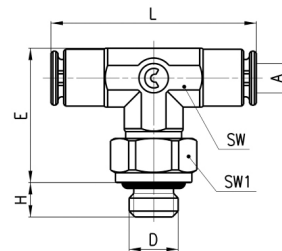
News
Swivel male branch tee Mod. C6430

With pre-applied PTFE sealant



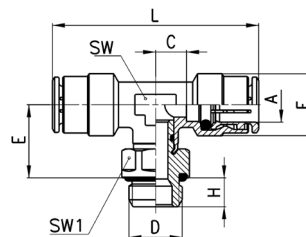
Mod.	A	D	C	E	F	H	L	SW	SW1	Weight [g]
C6430 4-1/8	4	R1/8	14	14,5	8,8	7,5	35	8	12	19
C6430 6-1/8	6	R1/8	16	15,2	11,7	7,5	40	9	12	29
C6430 6-1/4	6	R1/4	16	15,5	11,7	11	40	9	14	30
C6430 8-1/8	8	R1/8	17,5	15,5	13,7	7,5	45	11	12	37
C6430 8-1/4	8	R1/4	17,5	16,5	13,7	11	45	11	14	39
C6430 8-3/8	8	R3/8	17,5	18	13,7	11,5	45	11	19	55
C6430 10-1/4	10	R1/4	20,2	19	15,4	11	52	13	14	59
C6430 10-3/8	10	R3/8	20,2	19,5	15,4	11,5	52	13	19	56
C6430 10-1/2	10	R1/2	20,2	20,5	15,4	14	52	13	22	85
C6430 12-1/4	12	R1/4	19,2	20,5	18,3	11	53	15	17	60
C6430 12-3/8	12	R3/8	19,2	20,5	18,3	11,5	53	15	19	65
C6430 12-1/2	12	R1/2	19,2	21,5	18,3	14	53	15	22	89

FITTINGS, CONNECTORS AND TUBES

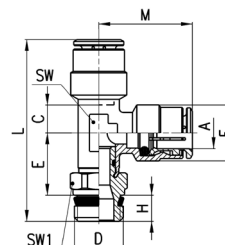
10
Swivel male branch tee Mod. 6432 Micro


Mod.	A	D	E	H	L	SW	SW1	Weight [g]
6432 3-M3	3	M3	13,7	2,5	21,4	6	6	5
6432 3-M5	3	M5	13,7	3,5	21,4	6	8	6

 - = with gasket
 ● = with O-Ring

BRASS SUPER-RAPID FITTINGS FOR PLASTIC TUBES
SERIES 6000 - DIMENSIONS
Swivel male branch tee Mod. 6432


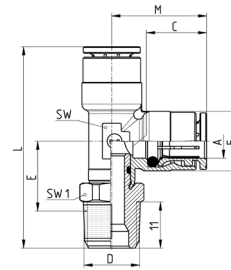
Mod.	A	D	C	E	F	H	L	SW	SW1	Weight [g]
6432 4-M5	4	M5	3,5	12,5	9	4	35	8	8	14
6432 4-1/8	4	G1/8	3,5	14,5	9	6	35	8	12	19
6432 5-M5	5	M5	5,5	12,5	10	4	41	9	8	19
6432 6-1/8	6	G1/8	4	15	12,7	6	40	9	12	29
6432 6-1/4	6	G1/4	4	16	12,7	7	40	9	15	30
6432 8-1/8	8	G1/8	5	16	14,2	6	45	11	12	37
6432 8-1/4	8	G1/4	5	17	14,2	7	45	11	15	39
6432 8-3/8	8	G3/8	5	17	14,2	7	45	11	19	55
6432 10-1/4	10	G1/4	5,8	19,5	16,5	7	52	13	15	59
6432 10-3/8	10	G3/8	5,8	19,5	16,5	7	52	13	19	56
6432 12-1/4	12	G1/4	7,3	20	19,5	7	53	15	17	60
6432 12-3/8	12	G3/8	7,3	20,5	19,5	7	53	15	19	80

Swivel male run tee Mod. S6440


Mod.	A	D	C	E	F	H	L	M	SW	SW1	Weight [g]
S6440 4-1/8	4	G1/8	3,5	14,5	9	5,5	37,5	17,5	8	12	23
S6440 6-1/8	6	G1/8	4	15	12,7	5,5	40,5	20	9	12	26
S6440 6-1/4	6	G1/4	4	15	12,7	7	42	20	9	14	31
S6440 8-1/8	8	G1/8	5	16	14,2	5,5	44	22,5	11	12	37
S6440 8-1/4	8	G1/4	5	16	14,2	7	45,5	22,5	11	14	35
S6440 8-3/8	8	G3/8	5	16,5	14,2	8	47	22,5	11	19	52
S6440 10-1/4	10	G1/4	5,8	18,5	16,5	7	51,5	26	13	14	43
S6440 10-3/8	10	G3/8	5,8	18,5	16,5	8	53	26	13	19	66
S6440 12-3/8	12	G3/8	7,3	19,5	19,5	8	54,5	26,5	15	19	65
S6440 14-1/2	14	G1/2	8,3	21,5	21,5	9	59	28,5	17	22	88

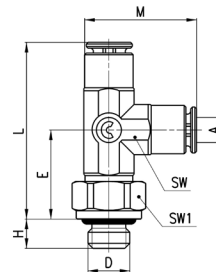
Swivel male run tee Mod. C6440

With pre-applied PTFE sealant



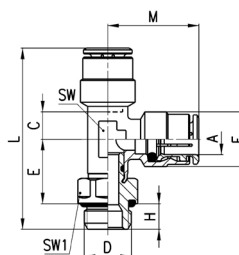
Mod.	A	D	C	E	F	H	L	M	SW	SW1	Weight [g]
C6440 4-1/8	4	R1/8	14	14,5	8,8	7,5	39,5	17,5	8	12	19
C6440 6-1/8	6	R1/8	16	15,5	11,7	7,5	41	20	9	12	29
C6440 6-1/4	6	R1/4	16	15,5	11,7	11	44,5	20	9	14	30
C6440 8-1/8	8	R1/8	17,5	15,5	13,7	7,5	44,5	22,5	11	12	37
C6440 8-1/4	8	R1/4	17,5	16,5	13,7	11	48	22,5	11	14	39
C6440 8-3/8	8	R3/8	17,5	18	13,7	11,5	50	22,5	11	19	55
C6440 10-1/4	10	R1/4	20,2	19	15,4	11	54	26	13	14	59
C6440 10-3/8	10	R3/8	20,2	19,5	15,4	11,5	55	26	13	19	56
C6440 12-1/4	12	R1/4	19,2	20,5	18,3	11	56	26,5	15	17	60
C6440 12-3/8	12	R3/8	19,2	20,5	18,3	11,5	56,5	26,5	15	19	65
C6440 12-1/2	12	R1/2	19,2	21,5	18,3	14	59	26,5	15	22	89

Swivel male run tee Mod. 6442 Micro

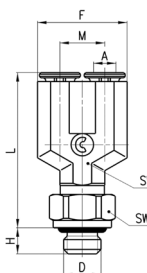


Mod.	A	D	E	H	L	M	SW	SW1	Weight [g]
6442 3-M3	3	M3	10,7	2,5	21,4	13,7	6	6	5
6442 3-M5	3	M5	12,2	3,5	21,4	13,7	6	8	6

- = with gasket
- = with O-Ring

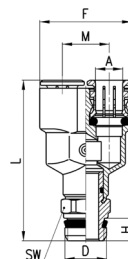
BRASS SUPER-RAPID FITTINGS FOR PLASTIC TUBES
SERIES 6000 - DIMENSIONS
Swivel male run tee Mod. 6442


Mod.	A	D	C	E	F	H	L	M	SW	SW1	Weight [g]
6442 4-M5	4	M5	3,5	12,5	9	4	34	17,5	8	8	18
6442 4-1/8	4	G1/8	3,5	14,5	9	6	38	17,5	8	12	19
6442 6-1/8	6	G1/8	4	15	12,7	6	41	20	9	12	26
6442 6-1/4	6	G1/4	4	16	12,7	7	43	20	9	15	36
6442 8-1/8	8	G1/8	5	16	14,2	6	44,5	22,5	11	12	31
6442 8-1/4	8	G1/4	5	17	14,2	7	46,5	22,5	11	15	42
6442 8-3/8	8	G3/8	5	17	14,2	7	46,5	22,5	11	19	50
6442 10-1/4	10	G1/4	5,8	19,5	16,5	7	52,5	26	13	15	46
6442 10-3/8	10	G3/8	5,8	19,5	16,5	7	52,5	26	13	19	66
6442 12-1/4	12	G1/4	7,3	20	16,5	7	53,5	26,5	15	17	73
6442 12-3/8	12	G3/8	7,3	20,5	19,5	7	54	26,5	15	19	64

Swivel male Y Mod. 6452 Micro


Mod.	A	D	F	H	L	M	SW	SW1	Weight [g]
6452 3-M3	3	M3	12	2,5	20,9	6	6	6	-
6452 3-M5	3	M5	12	3,5	20,9	6	6	8	7

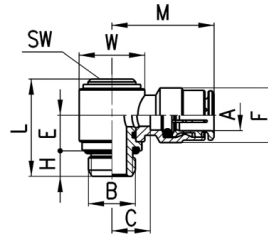
- = with gasket
 ● = with O-Ring

Swivel male Y Mod 6451 - S6450


Mod.	A	D	F	H	L	M	SW	Weight [g]
6451 4-M5	4	M5	18	4	26,5	9	-	17
6451 6-M5	6	M5	24,5	4	29,5	12,5	-	27
S6450 4-1/8	4	G1/8	18	5,5	38	9	12	23
S6450 6-1/8	6	G1/8	24,5	5,5	41,5	12,5	12	33
S6450 8-1/8	8	G1/8	28,5	5,5	48,5	14,5	14	48
S6450 8-1/4	8	G1/4	28,5	7	50	14,5	14	50

* = not swivel Model with gasket

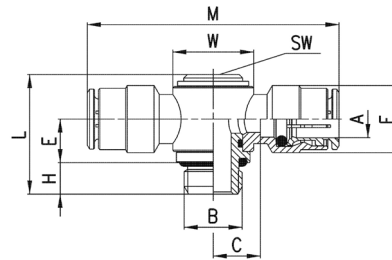
Assembled single banjo Mod. 6622



Mod.	A	B	C	E	F	H	L	M	SW	W	Weight [g]	Notes
6622 4-M5	4	M5	4	5,7	8,8	4	15,8	18	2,5	∅ 8	10	*
6622 4-1/8	4	G1/8	7,5	10,2	9	5	25	21,5	4	∅ 14	22	-
6622 6-1/8	6	G1/8	8	10,2	12,7	5	25	24	4	∅ 14	24	-
6622 6-1/4	6	G1/4	10	9,1	12,7	6	25,3	26	5	∅ 18	35	-
6622 8-1/8	8	G1/8	8	10,2	14,2	5	25	25,5	4	∅ 14	28	-
6622 8-1/4	8	G1/4	10	9,1	14,2	6	25,3	27,5	5	∅ 18	39	-
6622 10-1/4	10	G1/4	8,8	9,1	16,5	6	25,3	29	5	∅ 18	42	-

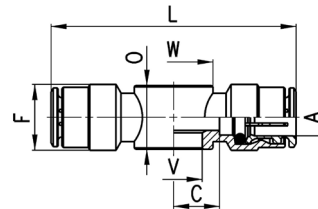
* = Complete Metric Swivel Single Banjo

Assembled double banjo Mod. 6632

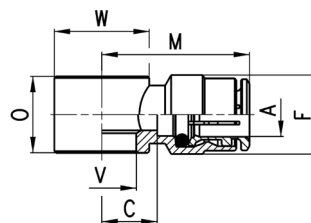


Mod.	A	B	C	E	F	H	L	M	W	SW	Weight [g]
6632 4-1/8	4	G1/8	7,5	10,2	9	5	25	43	∅ 14	4	24
6632 6-1/8	6	G1/8	8	10,2	12,7	5	25	48	∅ 14	4	33
6632 6-1/4	6	G1/4	10	9,1	12,7	6	25,3	52	∅ 18	5	35
6632 8-1/8	8	G1/8	8	10,2	14,2	5	25	51	∅ 14	4	39
6632 8-1/4	8	G1/4	10	9,1	14,2	6	25,3	55	∅ 18	5	40
6632 10-1/4	10	G1/4	8,8	9,1	16,5	6	25,3	58	∅ 18	5	50

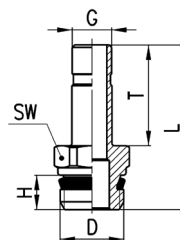
Double banjo body Mod. 6620



Mod.	A	C	F	L	O	V	W	Weight [g]	Assembled with Mod.
6620 4-M5	4	5	9	38	9	5,1	∅ 9	13	SCU, SVU, SCO...
6620 4-1/8	4	7,5	9	43	14,5	9,8	∅ 14	19	1631, 1635, SCU, SVU, SCO...
6620 6-1/8	6	8	12,7	48	14,5	9,8	∅ 14	24	1631, 1635, SCU, SVU, SCO...
6620 6-1/4	6	10	12,7	52	14,5	13,2	∅ 18	26	1631, 1635, SCU, SVU, SCO...
6620 8-1/8	8	8	14,2	51	14,5	9,8	∅ 14	32	1631, 1635, SCU, SVU, SCO...
6620 8-1/4	8	10	14,2	55	14,5	13,2	∅ 18	34	1631, 1635, SCU, SVU, SCO...

BRASS SUPER-RAPID FITTINGS FOR PLASTIC TUBES
SERIES 6000 - DIMENSIONS
Single banjo body Mod. 6610


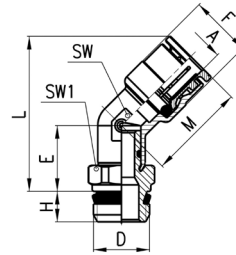
Mod.	A	C	F	M	O	V	W	Weight [g]	Assembled with Mod.
6610 4-M5	4	5	9	19	9	5,1	∅ 9	9	1631
6610 4-M6	4	5	9	19	9	5,1	∅ 9	8	SCU, SVU, SCO...
6610 4-1/8	4	7,5	9	21,5	14,5	9,8	∅ 14	14	1631, 1635, SCU, SVU, SCO...
6610 5-M5	5	5	10	20	9	5,1	∅ 9	9	1631
6610 5-M6	5	5	10	20	9	5,1	∅ 9	8	SCU, SVU, SCO...
6610 5-1/8	5	8	10	23	14,5	9,8	∅ 14	16	1631, 1635, SCU, SVU, SCO...
6610 6-M5	6	6,5	12,7	22,5	9	5,1	∅ 10	12	1631
6610 6-M6	6	6,5	12,7	22,5	9	5,1	∅ 10	12	SCU, SVU, SCO...
6610 6-1/8	6	8	12,7	24	14,5	9,8	∅ 14	16	1631, 1635, SCU, SVU, SCO...
6610 6-1/4	6	10	12,7	26	14,5	13,2	∅ 18	19	1631, 1635, SCU, SVU, SCO...
6610 8-1/8	8	8	14,2	25,5	14,5	9,8	∅ 14	19	1631, 1635, SCU, SVU, SCO...
6610 8-1/4	8	10	14,2	27,5	14,5	13,2	∅ 18	22	1631, 1635, SCU, SVU, SCO...
6610 8-3/8	8	11	14,2	28,5	14,5	16,7	∅ 21	23	1631, 1635, SCU, SVU, SCO...
6610 10-1/4	10	8,8	16,5	29	14,5	13,2	∅ 18	22	1635, SCU, SVU, SCO...
6610 10-3/8	10	10,3	16,5	30,5	14,5	16,7	∅ 21	23	1635, SCU, SVU, SCO...
6610 12-1/2	12	12,8	16,5	32	14,5	21	∅ 26	37	1635

Male plug-in stem Mod. 6811


Mod.	G	D	H	T	L	SW	Weight [g]	
6811 4-M5	4	M5	4	16,5	24,5	8	3	●
6811 4-1/8	4	G1/8	5,5	16,5	27,8	12	10	-
6811 5-1/8	5	G1/8	5,5	18	29,3	12	9	-
6811 5-1/4	5	G1/4	7	18	31	14	11	-
6811 6-1/8	6	G1/8	5,5	18	29,3	12	10	-
6811 6-1/4	6	G1/4	7	18	31	14	12	-
6811 8-1/8	8	G1/8	5,5	20,5	31,8	12	12	-
6811 8-1/4	8	G1/4	7	20,5	33,5	14	13	-
6811 10-1/4	10	G1/4	7	23	36	14	16	-
6811 10-3/8	10	G3/8	8	23	37,3	19	25	-
6811 12-3/8	12	G3/8	8	24	38,3	19	25	-
6811 14-1/2	14	G1/2	9	28	44	22	39	-

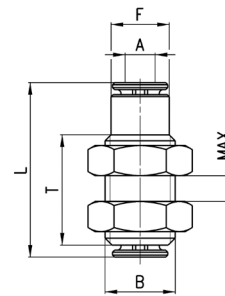
● = with O-Ring

Swivel male 45° elbow Mod. S6110



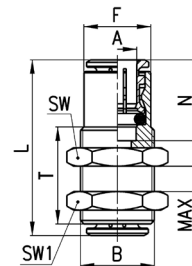
Mod.	A	D	E	F	H	L	M	SW	SW1	Weight [g]
S6110 6-1/8	6	G1/8	14	12,7	5,5	32,5	20,5	11	12	21
S6110 6-1/4	6	G1/4	14	12,7	7	34,5	20,5	11	14	25
S6110 8-1/8	8	G1/8	14	14,2	5,5	32,5	22,5	11	12	21
S6110 8-1/4	8	G1/4	14	14,2	7	34,5	22,5	11	14	26
S6110 8-3/8	8	G3/8	14,5	14,2	8	35	22,5	11	19	38
S6110 10-1/4	10	G1/4	15,5	16,5	7	39,5	26,5	15	17	39
S6110 10-3/8	10	G3/8	15,5	16,5	8	39,5	26,5	15	19	44
S6110 10-1/2	10	G1/2	16	16,5	9	40	26,5	15	22	57
S6110 12-1/4	12	G1/4	15,5	19,5	7	40,5	26,5	15	17	41
S6110 12-3/8	12	G3/8	15,5	19,5	8	40,5	26,5	15	19	46
S6110 12-1/2	12	G1/2	16	19,5	9	41	26,5	15	22	59

Equal bulkhead connector Mod. 6590 Micro

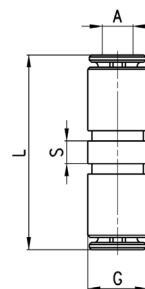


Mod.	A	B	F	L	MAX	T	Weight [g]
6590 3	3	M7x0.75	5,8	18,4	5	11,4	4

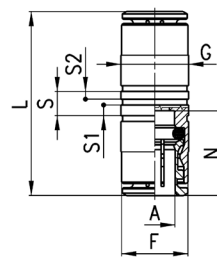
Equal bulkhead connector Mod. 6590



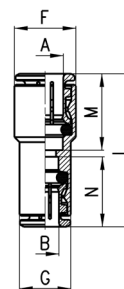
Mod.	A	B	F	L	N	MAX	SW	SW1	T	Weight [g]
6590 4	4	M10x1	8,8	29	14	10,5	14	14	20	16
6590 5	5	M12x1	9,8	31	15	10,5	17	17	20	25
6590 6	6	M14x1	12,5	33	16	10,5	17	17	20	28
6590 8	8	M16x1	14,5	36	17,5	11,5	19	19	21	35
6590 10	10	M18x1	16,3	41,5	20,2	13	22	22	23,5	51
6590 12	12	M20x1	18,8	39,5	19,2	14,5	24	24	25	56
6590 14	14	M22x1	20,5	41,5	20,2	17,5	27	27	30	82

BRASS SUPER-RAPID FITTINGS FOR PLASTIC TUBES
SERIES 6000 - DIMENSIONS
Equal union Mod. 6580 Micro


Mod.	A	G	L	S	Weight [g]
6580 3	3	5,8	19,9	2,2	2

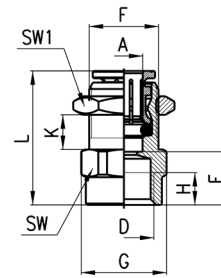
Equal union Mod. 6580


Mod.	A	F	G	L	N	S	S1	S2	Weight [g]
6580 4	4	8,4	9	29	14	5	2,2	1,6	11
6580 5	5	9,4	10	31	15	5	2,2	1,6	15
6580 6	6	11,7	12	34	16	5	2,2	1,6	16
6580 8	8	13,7	14	37	17,5	5	2,2	1,6	23
6580 10	10	15,4	17	41,5	20,2	5	2,2	1,6	33
6580 12	12	18,3	19	39,5	19,2	5,2	2,2	1,6	40
6580 14	14	20,5	21	41,5	20,2	5,2	2,2	1,6	47
6580 16	16	-	47	47	23	-	-	-	60

Reducer union connector Mod. 6580


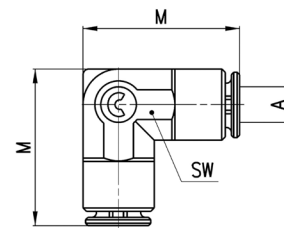
Mod.	A	B	F	G	L	M	N	Weight [g]
6580 6-4	6	4	12	9	31,5	16	14	12
6580 8-6	8	6	14	12,2	35	17,5	16	19
6580 10-8	10	8	16	14	39	20	17,5	25
6580 12-10	12	10	19	16	40,5	19	20	35

Bulkhead female connector Mod. 6593



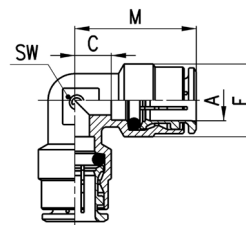
Mod.	A	D	E	F	G	H	L	K [max]	K [min]	SW	SW1	Weight [g]
6593 6-1/8	6	G1/8	10	M12x1	16,4	6	24,5	8,5	2	15	17	19
6593 6-1/4	6	G1/4	11,5	M12x1	18,5	7	26	6,5	2	17	17	22
6593 8-1/8	8	G1/8	10	M15x1	18,5	6	27	9,5	2	17	19	26
6593 8-1/4	8	G1/4	11,5	M15x1	18,5	7	28,5	9,5	2	17	19	26
6593 10-3/8	10	G3/8	12,8	M18x1	24,5	8	32,5	12	2	22	22	43

Equal union elbow Mod. 6550 Micro

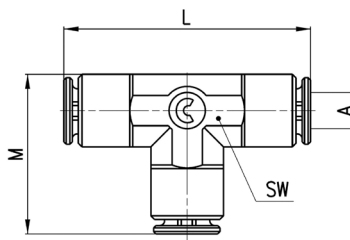


Mod.	A	M	SW	Weight [g]
6550 3	3	13,7	6	3

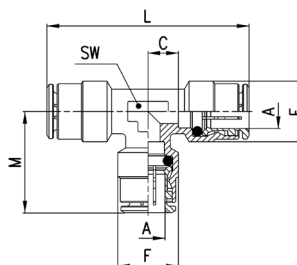
Equal union elbow Mod. 6550



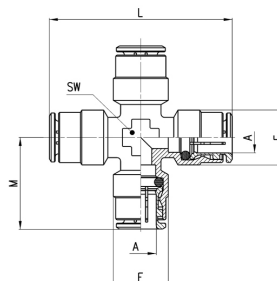
Mod.	A	C	F	M	SW	Weight [g]
6550 4	4	3,5	9	17,5	8	8
6550 5	5	5,5	10	20,5	9	15
6550 6	6	4	12,7	20	9	17
6550 8	8	5	14,2	22,5	11	22
6550 10	10	5,8	16,5	26	13	30
6550 12	12	7,3	19,5	26,5	15	44
6550 14	14	8,3	21,5	28,5	17	71

BRASS SUPER-RAPID FITTINGS FOR PLASTIC TUBES
SERIES 6000 - DIMENSIONS
Equal union tee Mod. 6540 Micro


Mod.	A	L	M	SW	Weight [g]
6540 3	3	21,4	13,7	6	4

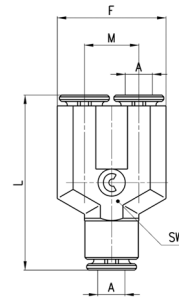
Equal union tee Mod. 6540


Mod.	A	C	F	L	M	SW	Weight [g]
6540 4	4	3,5	9	35	17,5	8	14
6540 5	5	5,5	10	41	20,5	9	21
6540 6	6	4	12,7	40	20	9	24
6540 8	8	5	14,2	45	22,5	11	32
6540 10	10	5,8	16,5	52	26	13	43
6540 12	12	7,3	19,5	53	26,5	15	60
6540 14	14	8,3	21,5	57	28,5	17	75

Equal union cross Mod. 6600


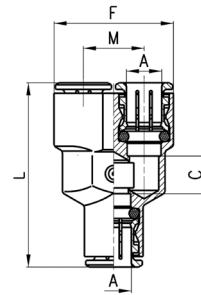
Mod.	A	F	L	M	SW	Weight [g]
6600 4	4	9	38	19	9	26
6600 5	5	10	41	20,5	9	29
6600 6	6	12,7	44	22	10	35
6600 8	8	14,2	49	24,5	12	50
6600 10	10	16,5	55	27,5	14	63
6600 12	12	19,5	56	28	16	84

Equal union Y Mod. 6560 Micro



Mod.	A	F	L	M	SW	Weight [g]
6560 3	3	12	20,4	6	6	5

Equal union Y Mod. 6560

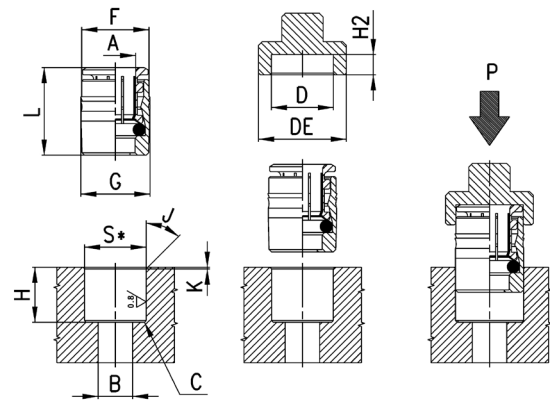


Mod.	A	C	F	L	M	Weight [g]
6560 4	4	5	18	33	9	19
6560 6	6	7	24,5	39	12,5	30
6560 8	8	9	28,5	44	14,5	42
6560 10	10	15,5	32	53,5	16	63

FITTINGS, CONNECTORS AND TUBES

10

Cartridge Mod. 6700

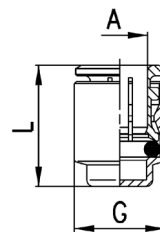


S* = for both metallic and synthetic seat

Mod.	A	B	C	D	DE	F	G	H	H2 [+0,1/0]	J	K	L	P min [Kg]	P max. [Kg]	S [+0,01/-0,04]	Weight [g]
6700 3	3	2	0,5x45°	6,1	11	5,9	6,2	6,3	2,6	30°	0,3	9,2	80	350	6	1
6700 4	4	3,5	0,5x45°	8,8	14	8,6	9	11	3,3	15°	0,5	14,5	200	360	8,75	4
6700 5	5	3,5	0,5x45°	9,8	15	9,6	10	11,5	3,3	15°	0,5	15,5	230	450	9,75	5
6700 6	6	4	0,5x45°	12	17	11,8	12,2	12	3,8	15°	0,5	16,5	160	570	11,95	8
6700 8	8	6	0,5x45°	14	19	13,8	14,2	14	3,3	15°	0,5	18	140	400	13,95	11
6700 10	10	8	0,5x45°	16	21	15,8	16,2	16,5	3,5	15°	0,5	20,5	150	650	15,95	15

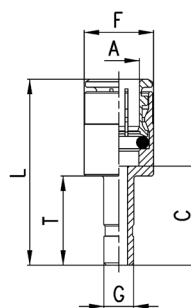
BRASS SUPER-RAPID FITTINGS FOR PLASTIC TUBES
SERIES 6000 - DIMENSIONS

End cap Mod. 6750



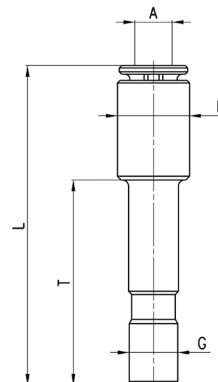
Mod.	A	G	L	Weight [g]
6750 4	4	8,8	15	4
6750 6	6	11,8	17	7
6750 8	8	13,8	18,5	9
6750 10	10	15,8	21	12
6750 12	12	17,8	20	15

Plug-in increaser Mod. 6850



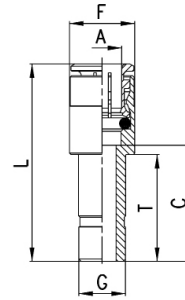
Mod.	A	G	C	F	L	T	Weight [g]
6850 6-4	6	4	17,5	12,7	33,5	16,5	11
6850 8-6	8	6	19	14	36,5	18	15

Plug-in reducer Mod. 6800 Micro



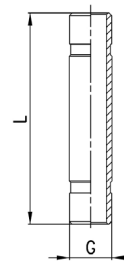
Mod.	A	F	G	L	T	Weight [g]
6800 3-4	3	5,8	4	26	16,5	2

Reducer junction Mod. 6800



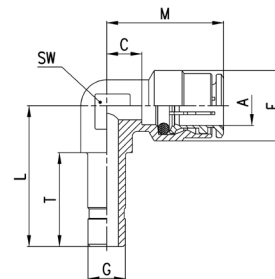
Mod.	A	G	C	F	L	T	Weight [g]
6800 4-5	4	5	19	9	33	18	8
6800 4-6	4	6	15,5	9	29,5	18	9
6800 4-8	4	8	18	9	32	20,5	10
6800 5-6	5	6	19	10	34	18	11
6800 5-8	5	8	18	10	33	20,5	12
6800 6-8	6	8	18	12,7	34	20,5	12
6800 6-10	6	10	20,5	12,7	36,5	23	17
6800 6-12	6	12	17,5	12,7	33,5	24	21
6800 8-10	8	10	20,5	14	38	23	15
6800 8-12	8	12	21,5	14	39	24	22
6800 10-12	10	12	20,3	16,5	40,5	24	27
6800 10-14	10	14	24,3	16,5	44,5	28	33
6800 12-14	12	14	24,3	18,8	45,5	28	27

Double stem equal union Mod. 6950



Mod.	G	L	Weight [g]
6950 4	4	32,5	3
6950 6	6	35,5	4
6950 8	8	40,5	7
6950 10	10	46	10
6950 12	12	48	13
6950 14	14	52	17

Plug-in elbow Mod. 6555

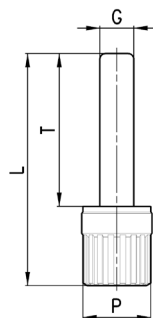


Mod.	A	G	C	L	F	T	M	SW	Weight [g]
6555 4-4	4	4	3,5	22	9	16,5	17,5	9	8
6555 6-6	6	6	4	24,5	12,7	18	20	9	14
6555 8-8	8	8	5	27,5	14,2	20	22,5	11	21
6555 10-10	10	10	5,8	32	16,5	23	26	13	26

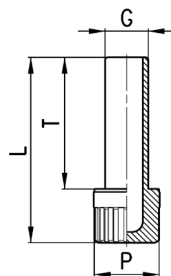
BRASS SUPER-RAPID FITTINGS FOR PLASTIC TUBES
SERIES 6000 - ACCESSORIES
Fitting Protection Cap


Colour: black
 Self-extinguishing material, class V0

Mod.	A	F	L	Weight [g]
6708 4	4	10,7	10,7	1
6708 5	5	11,7	11	1
6708 6	6	13,7	11,5	1
6708 8	8	15,7	12,5	1
6708 10	10	18,5	13	1
6708 12	12	20,7	15	2
6708 14	14	23,7	15	2

Plastic male plug Mod. 6900 Micro


Mod.	G	L	P	T	Weight [g]
6900 3	3	20,5	6	13,5	1

Plastic male plug


Mod.	G	L	P	T	Weight [g]
6900 4	4	29	8	20	1
6900 5	5	29,5	8	20,5	1
6900 6	6	31,5	8	22,5	1
6900 8	8	34,5	12	24,5	2
6900 10	10	37	12	27	2
6900 12	12	40,5	16	28,5	3
6900 14	14	42,5	16	30,5	3

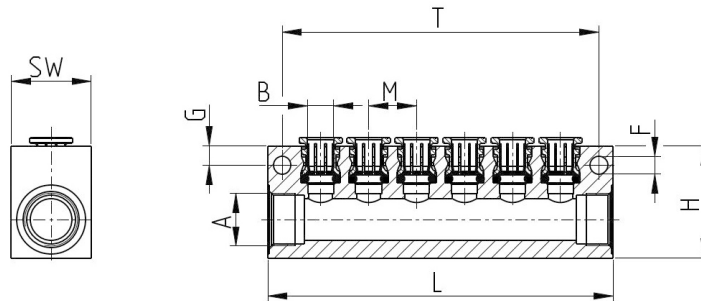
Disconnecting tube set Mod. SP



The set includes keys to disconnect tubes with diameters between 4 and 12 mm.

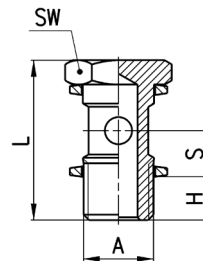
Mod.
SP

Manifold Push in Mod. 3053



Mod.	A	Single lateral outlets	B	L	G	M	T	H	F	SW	Weight [g]
3053 1/4-8L-4	G1/4	8	4	97	4,5	10	88	30	4,5	20	140
3053 1/4-8L-6	G1/4	8	6	120	4,5	13	111	30	4,5	20	172
3053 3/8-6L-8	G3/8	6	8	108	6	15	99	35	5,5	25	210
3053 1/2-6L-10	G1/2	6	10	127	6,5	17	118	40	5,5	30	365

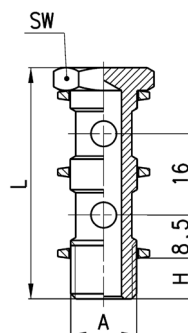
Single Banjo Stem for Series 6000



Mod.	A	H	L	S	SW	Weight [g]
1631 01-M5	M5	4	18	5,5	8	*
1631 01-1/8	G1/8	6	27	8,5	14	-
1631 01-1/4	G1/4	8	29,5	8,5	17	-
1631 01-3/8	G3/8	8	30	8,5	19	-
1631 01-1/2	G1/2	9	31	8,5	27	-

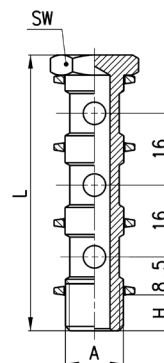
* = zinc-plated steel

Double banjo bolt Mod. 1631 02



Mod.	A	H	L	SW	Weight [g]
1631 02-1/8	G1/8	6	43	14	18
1631 02-1/4	G1/4	8	45,5	17	33
1631 02-3/8	G3/8	8	46	19	48

Triple banjo bolt Mod. 1631 03



Mod.	A	H	L	SW	Weight [g]
1631 03-1/8	G1/8	6	59	14	24
1631 03-1/4	G1/4	8	61,5	17	42
1631 03-3/8	G3/8	8	62	19	62