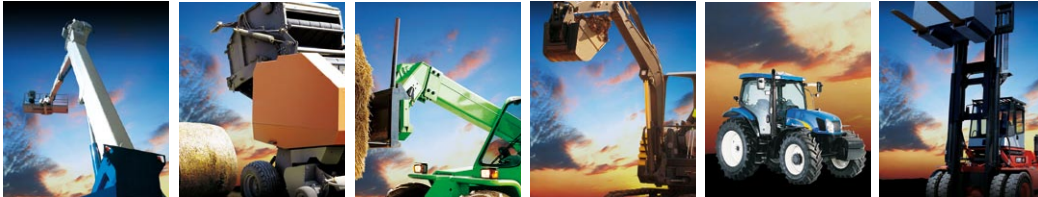


NEW

# EC08M EC10M EF08M EF10M

Cartridge directional solenoid valves



**A simple and flexible solution for  
different applications**



# EC08M-EC10M EF08M-EF10M Cartridge



EC08M-EF08M

EC10M-EF10M

- 2-ways, 2 positions, poppet type solenoid valve, ON-OFF
- High flow/pressure
- Reduced dimensions

Walvoil is pleased to present the new cartridge directional solenoid valves EC08M-EF08M and EC10M-EF10M. Thanks to the reduced dimensions these valves are indicated for many applications: agriculture, earth moving machines and industrial vehicles.

## Working conditions

This catalogue shows technical specifications and diagrams measured with mineral oil of 46 cSt viscosity at 40° (104°F) temperature.

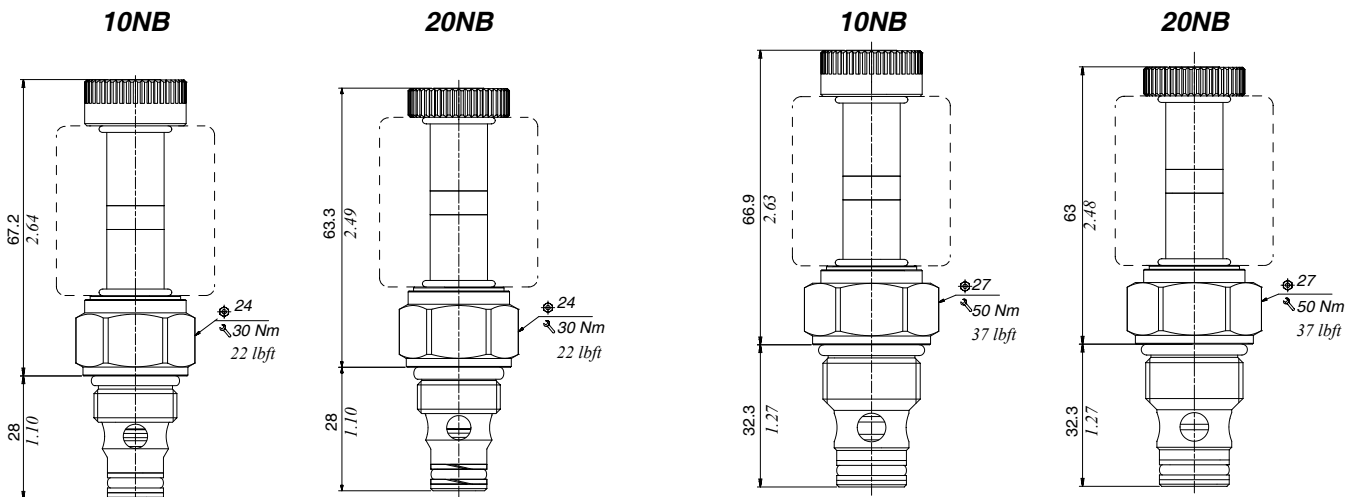
		EC08M-EF08M		EC10M-EF10M	
Nominal flow		up to 40 l/min (10.5 US gpm)		up to 70 l/min (18.5 US gpm)	
Nominal pressure (max.)		380 bar (5500 psi)		380 bar (5500 psi)	
Oil leakage	at 210 bar (3050 psi)	EC08M 0.10 cm <sup>3</sup> /min (0.006 in <sup>3</sup> /min)	EF08M 0.25 cm <sup>3</sup> /min (0.015 in <sup>3</sup> /min)	EC10M 0.10 cm <sup>3</sup> /min (0.006 in <sup>3</sup> /min)	EF10M 0.25 cm <sup>3</sup> /min (0.006 in <sup>3</sup> /min)
Fluid		mineral based oil			
Viscosity		10-200 cSt			
Max level of contamination		18/16/13 ISO4406			
Fluid temperature	with NBR seals with FPM seals	from -20°C (-4°F) to 80°C (176°F) from -20°C (-4°F) to 100°C (212°F)			
Environmental temp. for working conditions		from -20°C (-4°F) to 50°C (122°F)			
Cavity		SAE 8/2		SAE 10/2	
Coil insulation	IEC85-EN60730	class H			
Weather protection	IEC60529	IP65, IP67, IP69K depends on connector type			
Nominal voltages		12 VDC - 24VDC ± 10%			
Duty cycle		100%			
Power rating		22.8 W (24VDC) - 22.5 W (12VDC)			

NOTE - For different conditions, please contact Walvoil Sales Dept.

## Dimensions

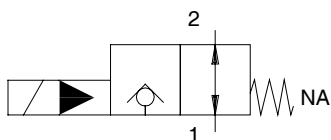
EC08M-EF08M

EC10M-EF10M

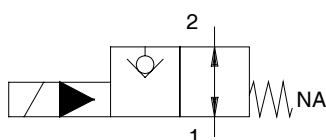


Hydraulic circuit

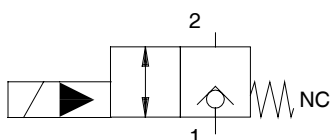
EF08M-10NB  
EF10M-10NB



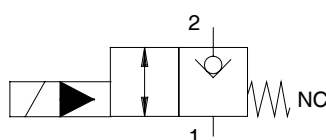
EC08M-10NB  
EC10M-10NB



EF08M-20NB  
EF10M-20NB

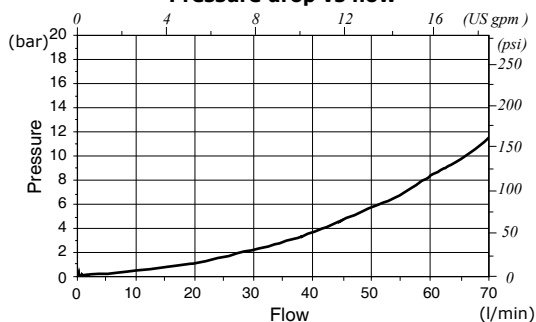


EC08M-20NB  
EC10M-20NB

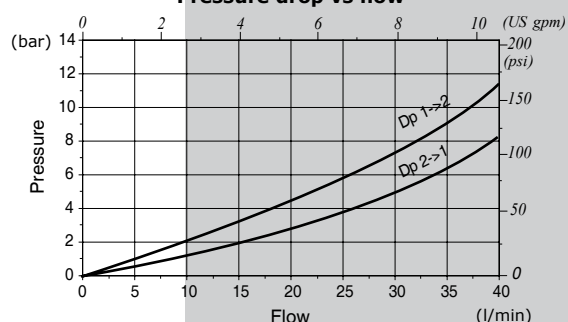


Performance data

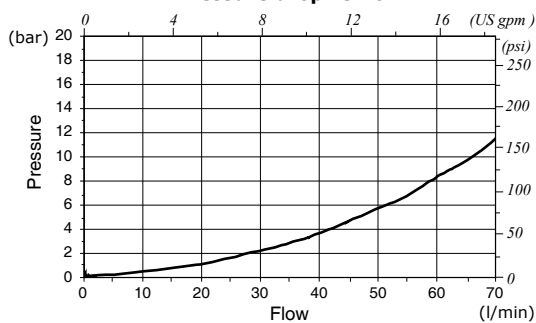
EF08M/10NB - EF08M/20NB  
Pressure drop vs flow



EC08M/10NB - EC08M/20NB  
Pressure drop vs flow



EC10M/EF10M  
Pressure drop vs flow



## Features

EC08M-EF08M and EC10M-EF10M are ON-OFF valves, 2-ways, 2 positions, poppet type solenoid valves.

Two versions are available:

- normally open valve
- normally closed valve.

## Applications

EC08M, EC10M, EF08M and EF10M thanks to the reduced dimensions, high flow and pressure, are indicated for many applications.

## Configuration and options

The valves are available in standard version (no emergency) or with manual emergency.

Coils are available with different power supply and with many connectors type (DIN, Deutsch, AMP-Junior).

## Description composition

