

MANUAL

CONNECTED SERVICE COUNTER

Assembly instruction
Installation instruction



ASaDS2301.1
09-11-2023



Required tools

- Pencil
- Ø3 mm metal drill bit
- Ø8 mm metal drill
- Cordless screwdriver
- Phillips screwdriver
- Coin
- Clamp

Scope of delivery

- ① 1x Counter
- ② 1x Mounting element
- ③ 2x Screws
- ④ 1x Battery CR2032
- ⑤ 1x Operators manual

1 Assembly instruction

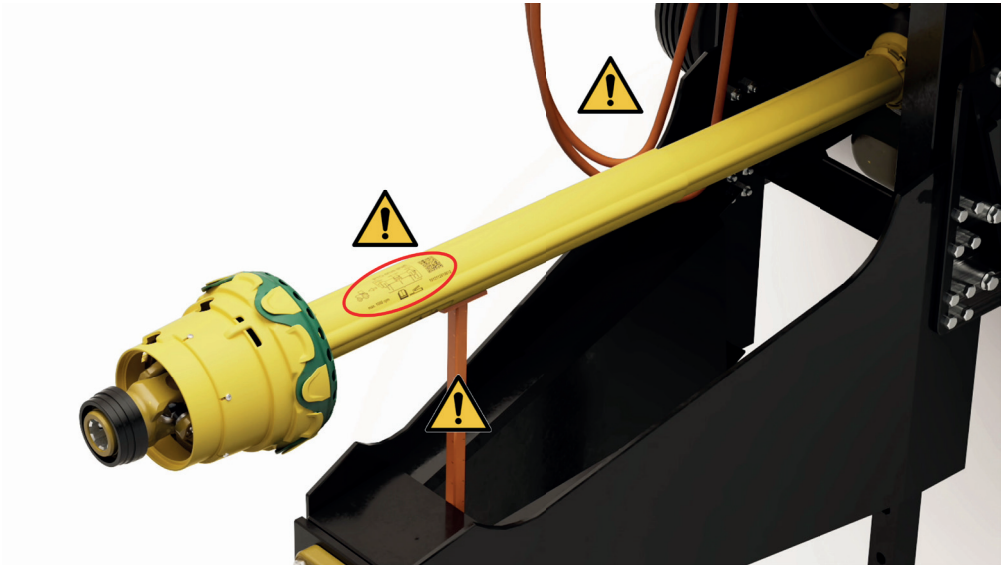
Requirements for Assembly



The drive shaft must meet the following requirements:

- The guard tube and the entire protective equipment of the drive shaft is complete and undamaged,
- The guard tube is secured against rotation,
- Use only on WALTERSCHEID drive shafts

1.1 Determination of the position on the PTO shaft guard



The selection of the appropriate position for the Counter is made on the machine with the PTO shaft installed. Select a position on the outer guard tube of the PTO shaft that meets the following criteria:



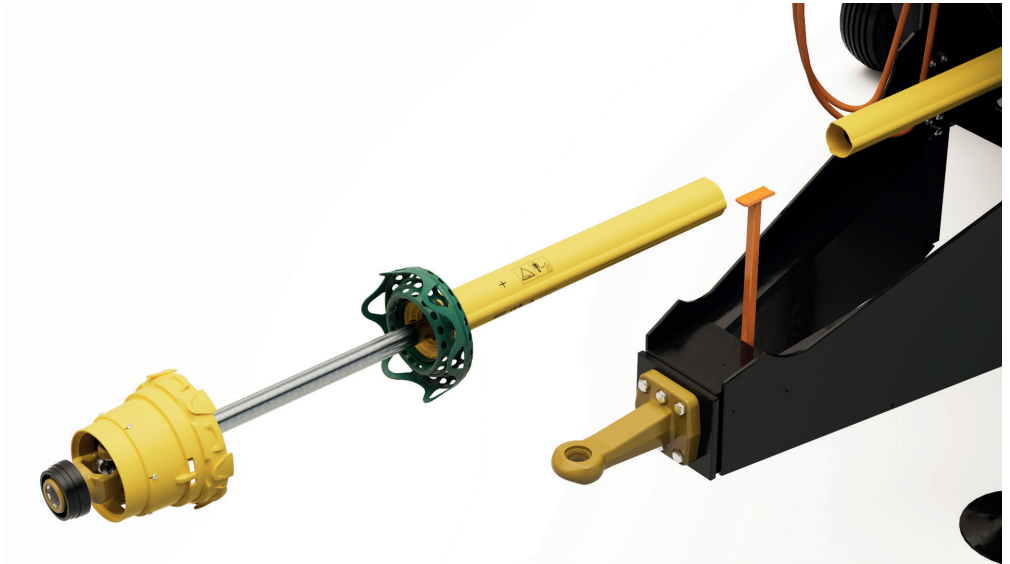
- The Counter should be positioned on the outer protective tube near the guard cone.
- No labeling on the PTO shaft guard should be obscured.
- A collision with the holding device (support) must be avoided.
- Contact with hydraulic hoses or chains must be avoided.

1.2 Marking the position on the PTO shaft guard



Please mark the selected position for later assembly with a suitable pen. For non-round guard tubes, select a position that is as flat as possible on the circumference of the guard tube (see illustration on the right).

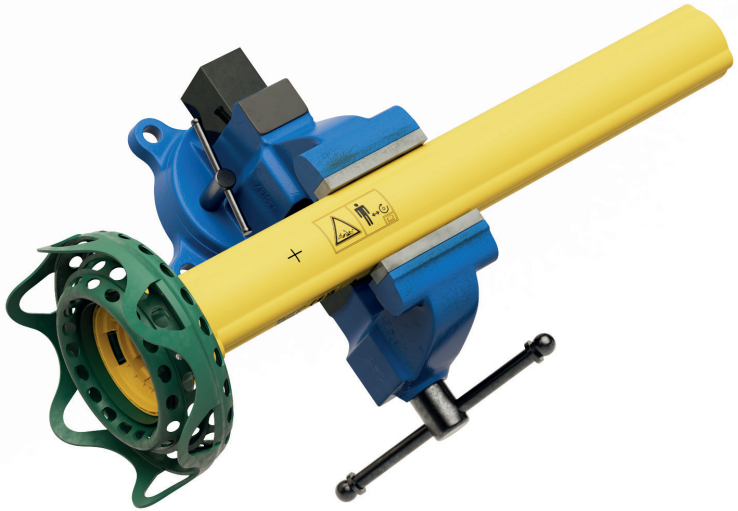
1.3 Disassembly of drive shaft and shaft guard



To prevent damage to the PTO shaft during installation, the outer part of the shaft guard must be removed from the PTO shaft. Disassemble the PTO shaft and the shaft guard according to the manufacturer's instructions.

<https://www.walterscheid.com/en/downloads/manuals/>

1.4 Fixing the PTO shaft guard



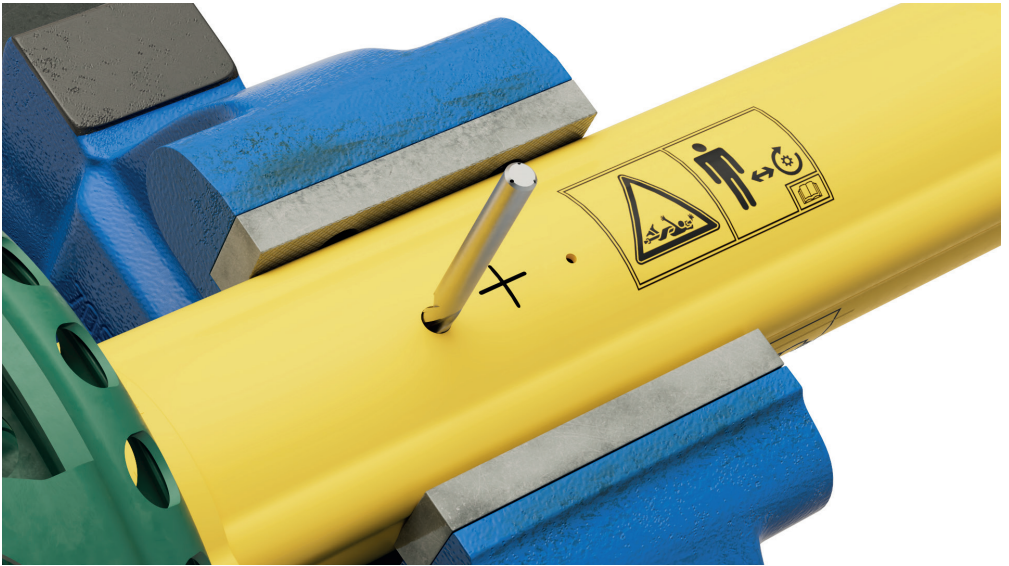
Fix the disassembled shaft guard in a clamp. Fix the protective half in such a way that the mounting position for the counter can be easily reached and the guard tube is not damaged.

1.5 Place and fix Counter



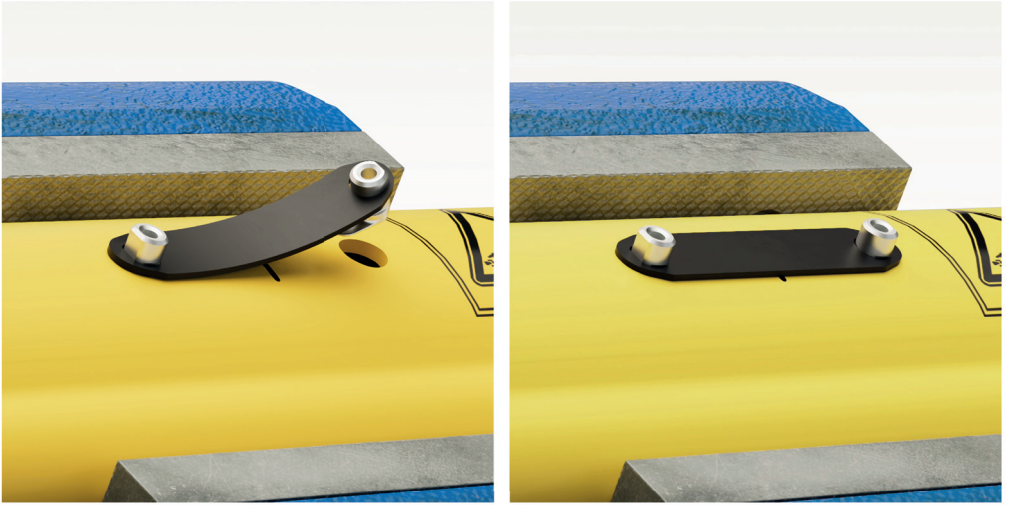
Fix the Counter at the previously marked position to use it as a drilling template. Then pre-drill the two holes with a $\text{\O}3$ mm metal drill bit.

1.6 Drill holes



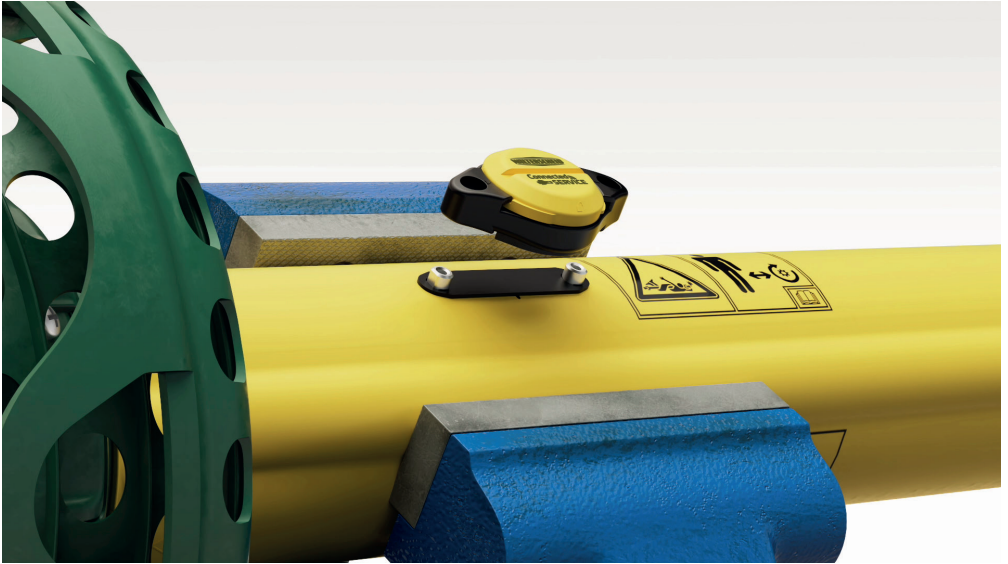
Remove the counter from the protective half and then drill out the two $\text{\O}3$ mm holes with a $\text{\O}8$ mm metal drill bit. Then remove chips and burrs.

1.7 Hook mounting element



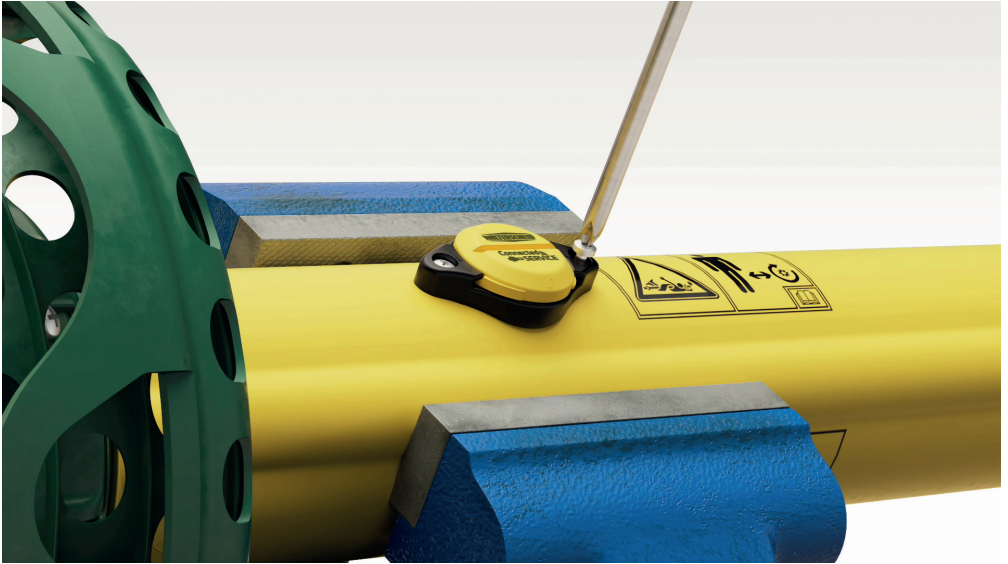
Insert the mounting element into the holes by hooking the metal hooks into the holes one after the other.

1.8 Mounting of Counter



Carefully place the Counter on the mounting element. The metal hooks of the mounting element must be inserted into the bottom of the Counter housing.

1.9 Mounting of Counter



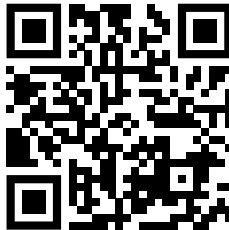
Carefully insert the screws into the Counter and tighten them with the Phillips screwdriver (tightening torque ~ 0.8 Nm).

The tight fit of the screws and the counter on the shaft guard must be checked regularly.

1.10 Assemble PTO shaft



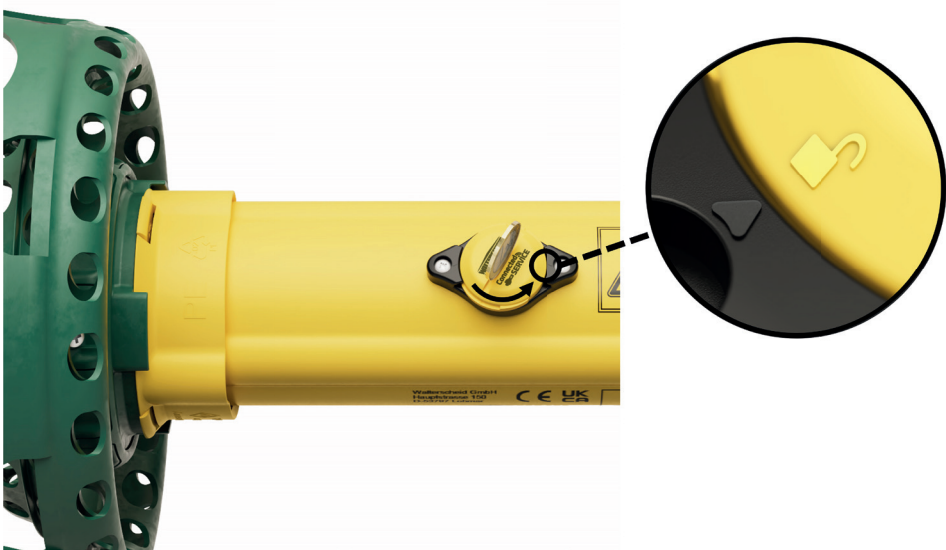
After you have checked the tight fit of the Counter, you can mount the shaft guard on the PTO shaft according to the manufacturer's instructions and then reinstall it on the machine. For the activation of the counter install the Walterscheid Connected Service App and follow the further instruction under „Add Counter“.



Download WCS Assistant App:
<https://www.walterscheid.app>

2 Installation instruction

2.1 Open battery cover



Open the Counter by using a coin to turn the cover 90° counter-clockwise to the open position. Now you can open the cover upwards.

2.2 Scan data matrix code with WCS Assistant



Open the Walterscheid Connected Service app on your smartphone and click on „Add counter“ on the home screen. In the next step, you will be asked to scan the data matrix code on the circuit board of the Counter.

2.3 Insert battery



Insert the battery into the battery cover. Make sure that the plus pole of the battery points to the plus symbol in the battery cover.

2.4 Close battery cover



Press the lid in the open position (lock symbol) onto the lower part of the housing. You can then use a coin to close the battery cover by turning it 90° clockwise.

Off-Highway Powertrain Services Germany GmbH
Hauptstraße 150
D-53797 Lohmar
Tel: +49 2246 12-0
Fax: +49 2246 12-3501
E-Mail: support.wcs@walterscheid.com



ASaDS2301.1
09-11-2023

Off-Highway Powertrain Services Germany GmbH reserves the right to make technical modifications without prior notice.