

## 9700 Tool Rebel Roller Cabinet 1, 94 pieces

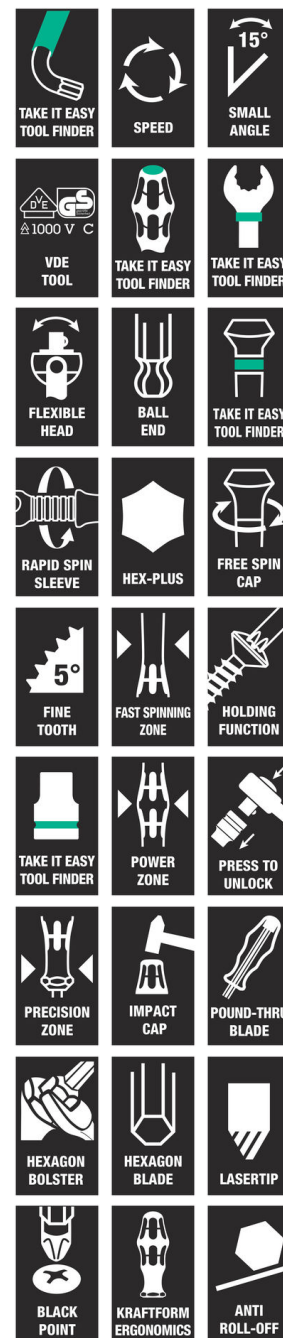
### Roller cabinet and foam inserts



<b>EAN:</b>	4013288225085	<b>Size:</b>	785x518x1020 mm
<b>Part number:</b>	05150130001	<b>Weight:</b>	94000 g
<b>Article number:</b>	9700	<b>Country of origin:</b>	DE (05)
		<b>Customs tariff number:</b>	94032080

- Exclusive roller cabinet in the Tool Rebel design
- Extremely robust thanks to a double-walled design
- With 7 drawers (5 flat, 2 high) - of which 2 flat drawers are equipped with foam inserts and tools (e.g. with Zyklop Speed ratchet and accessories, Joker spanners, Kraftform screwdrivers, L-keys)
- Dimensions flat drawers (width x height x depth): 522 x 81 x 398 mm
- Dimensions high drawers (width x height x depth): 522 x 166 x 398 mm
- 100 % drawer pull-out with ball bearing telescopic slides, self-closing
- All drawers are elaborately and individually layered
- Minimum risk of tilting over thanks to the drawer stop - only one drawer can be opened, no simultaneous pull-out of multiple drawers

Exclusive roller cabinet in the Tool Rebel design. Five flat and two high drawers ensure efficient, mobile organization of tools and materials. Extremely robust design thanks to a double-walled design and the completely welded construction of the entire body. For daily hard work in the workshop. Equipped with four Wera foam inserts: 9710 foam insert screwdriver set 1, 9720 foam insert 8000 A Zyklop ratchet set 1, 9731 foam insert 6003 Joker ring spanner set 1, 9740 foam insert L-key set 1.



#### Web link

[https://products.wera.de/en/new\\_products\\_2022\\_roller\\_cabinet\\_and\\_foam\\_inserts\\_9700.html](https://products.wera.de/en/new_products_2022_roller_cabinet_and_foam_inserts_9700.html)

Wera - 9700

05150130001 - 4013288225085

Wera Werkzeuge GmbH

Korzter Straße 21-25

D-42349 Wuppertal

Tel: +49 (0)2 02 / 40 45-0

E-Mail: [info@wera.de](mailto:info@wera.de)

## Roller cabinet and foam inserts

### Robust design for hard work in the workshop



Exclusive roller cabinet in the Tool Rebel design



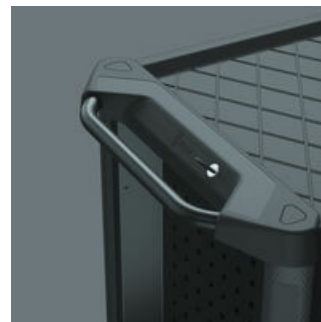
The double-walled design and the completely welded construction make the Tool Rebel roller cabinet extremely robust. The optimized yielding edge protection on all four corners ensures reliable impact protection thanks to an internal cushioning action.

### Storage and work surface with lots of advantages



The large storage and work surface is made of solvent-resistant plastic and, being also completely sealed, the inside of the trolley is protected from leaking liquids. Slots for accessories such as laptop holders and add-on modules are integrated into the work surface.

### Highly manoeuvrable



The ergonomically designed handlebar ensures that the roller cabinet is highly manoeuvrable. Durable handle thanks to the black powder-coated metal design.

### Sophisticated drawer design



The drawers are equipped with ball bearing telescopic slides and can be pulled out completely. Self-closing and mutually locking to prevent unintentional opening, thus minimal risk of tilting for roller cabinets. The carefully considered drawer design allows optimal use of the interior space. The dirt-resistant drawer coating makes cleaning easy.

### Detailed locking concept for more security



The ergonomically arranged lateral position of the lock improves usability and protects the key and lock from damage. The extremely robust locking system protects the tools stored in the roller cabinet against unauthorized access. The central locking is completed by a cylinder lock. Two folding keys are included.

### Heavy-duty gear



The Tool Rebel roller cabinet has large wheels, each with a load of 250 kg, with precision ball bearings and double ball rims in the spindle carrier. The workshop trolley is easy to move, even under high dynamic loads.

### Secure locking, smooth running



The two swivel castors are equipped with a double stop: The locked castor reliably prevents it from rolling away, the locked spindle carrier prevents the castors from turning unintentionally, e.g. on sloped surfaces. The oil- and acid-resistant elastic wheels ensure smooth running. A protective ring prevents the ingress of dirt and threads.

### Web link

[https://products.wera.de/en/new\\_products\\_2022\\_roller\\_cabinet\\_and\\_foam\\_inserts\\_9700.html](https://products.wera.de/en/new_products_2022_roller_cabinet_and_foam_inserts_9700.html)

Wera - 9700

05150130001 - 4013288225085

Wera Werkzeuge GmbH

Korzerter Straße 21-25

D-42349 Wuppertal

Tel: +49 (0)2 02 / 40 45-0

E-Mail: [info@wera.de](mailto:info@wera.de)

## 9700 Tool Rebel Roller Cabinet 1, 94 pieces

Roller cabinet and foam inserts



Set contents:

### 9710 Foam insert screwdriver set 1, 18 pieces



05150101001

1x 18 pieces



### 9720 Foam insert 8000 A Zyklus 1/4" ratchet set 1, 37 pieces



05150110001

1x 37 pieces



### 9731 Foam insert 6003 Joker set 1, 19 pieces

05150121001

1x 19 pieces



### 9740 Foam insert L-key set 1, 20 pieces

05150140001

1x 20 pieces



#### Web link

[https://products.wera.de/en/new\\_products\\_2022\\_roller\\_cabinet\\_and\\_foam\\_inserts\\_9700.html](https://products.wera.de/en/new_products_2022_roller_cabinet_and_foam_inserts_9700.html)

Wera - 9700

05150130001 - 4013288225085

Wera Werkzeuge GmbH

Korzerter Straße 21-25

D-42349 Wuppertal

Tel: +49 (0)2 02 / 40 45-0

E-Mail: [info@wera.de](mailto:info@wera.de)